

### Mouse TNFRSF14 ELISA Kit (HVEM) ab213892

1 Image

#### Overview

**Product name** Mouse TNFRSF14 ELISA Kit (HVEM)

**Detection method** Colorimetric

**Precision**

Intra-assay

Sample	n	Mean	SD	CV%
1	16	29pg/ml	1.59	= 5.5%
2	16	218pg/ml	14.38	= 6.6%
3	16	439pg/ml	26.77	= 6.1%

Inter-assay

Sample	n	Mean	SD	CV%
1	24	28pg/ml	1.56	= 5.6%
2	24	197pg/ml	16.15	= 8.2%
3	24	475pg/ml	31.82	= 6.7%

**Sample type** Cell culture supernatant, Serum, Cell Lysate, Hep Plasma, EDTA Plasma

**Assay type** Sandwich (quantitative)

**Sensitivity** < 1 pg/ml

**Range** 15.6 pg/ml - 1000 pg/ml

**Assay time** 3h 30m

**Assay duration** Multiple steps standard assay

**Species reactivity** **Reacts with:** Mouse

**Product overview** The Mouse TNFRSF14 Enzyme-Linked Immunosorbent Assay (ELISA) kit (HVEM) (ab213892) is designed for the quantitative detection of Mouse TNFRSF14 in cell culture supernatants, cell lysates, serum and plasma (heparin, EDTA).

The ELISA kit is based on standard sandwich enzyme-linked immunosorbent assay technology. A

monoclonal antibody from rat specific for TNFRSF14/HVEM has been precoated onto 96-well plates. Standards (Expression system for standard: CHO; Immunogen sequence: Q29-V207) and test samples are added to the wells, a biotinylated detection polyclonal antibody from goat specific for TNFRSF14/HVEM is added subsequently and then followed by washing with PBS or TBS buffer. Avidin-Biotin-Peroxidase Complex was added and unbound conjugates were washed away with PBS or TBS buffer. HRP substrate TMB was used to visualize HRP enzymatic reaction. TMB was catalyzed by HRP to produce a blue color product that changed into yellow after adding acidic stop solution. The density of yellow is proportional to the Mouse TNFRSF14/HVEM amount of sample captured in plate.

**Notes** Tumor necrosis factor receptor superfamily member 14 (TNFRSF14), also known as HVEM, is a protein that in humans is encoded by the TNFRSF14 gene. The protein encoded by this gene is a member of the TNF-receptor superfamily. It is mapped to 1p36.32. HVEM plays an important role in HSV pathogenesis because it enhanced the entry of several wildtype HSV strains of both serotypes into CHO cells, and mediated HSV entry into activated human T cells. HVEM and BTLA which form a bidirectional signaling pathway can regulate cell survival and inhibitory responses between interacting cells. HVEM as an important orchestrator of mucosal immunity integrates signals from innate lymphocytes to induce optimal epithelial Stat3 activation, which indicated that targeting HVEM with agonists could improve host defense.

**Platform** Pre-coated microplate (12 x 8 well strips)

**Properties**

**Storage instructions** Store at -20°C. Please refer to protocols.

Components	Identifier	1 x 96 tests	1 x 96 tests
ABC Diluent Buffer	Blue Cap	1 x 12ml	1 x 12ml
Adhesive Plate Seal		4 units	4 units
Antibody Diluent Buffer	Green Cap	1 x 12ml	1 x 12ml
Anti-Mouse TNFRSF14 coated Microplate (12 x 8 wells)		1 unit	1 unit
Avidin-Biotin-Peroxidase Complex (ABC)		1 x 100µl	1 x 100µl
Biotinylated anti- Mouse TNFRSF14 antibody		1 x 100µl	1 x 100µl
Lyophilized recombinant Mouse TNFRSF14 standard		2 vials	2 vials
Sample Diluent Buffer	Green Cap	1 x 30ml	1 x 30ml
TMB Color Developing Agent	Black Cap	1 x 10ml	1 x 10ml
TMB Stop Solution	Yellow Cap	1 x 10ml	1 x 10ml
Wash Buffer (25X)		1 x 20ml	1 x 20ml

**Function** Receptor for BTLA. Receptor for TNFSF14/LIGHT and homotrimeric TNFSF1/lymphotoxin-alpha. Involved in lymphocyte activation. Plays an important role in HSV pathogenesis because it enhanced the entry of several wild-type HSV strains of both serotypes into CHO cells, and

mediated HSV entry into activated human T-cells.

**Tissue specificity**

Widely expressed, with the highest expression in lung, spleen and thymus.

**Sequence similarities**

Contains 3 TNFR-Cys repeats.

**Post-translational modifications**

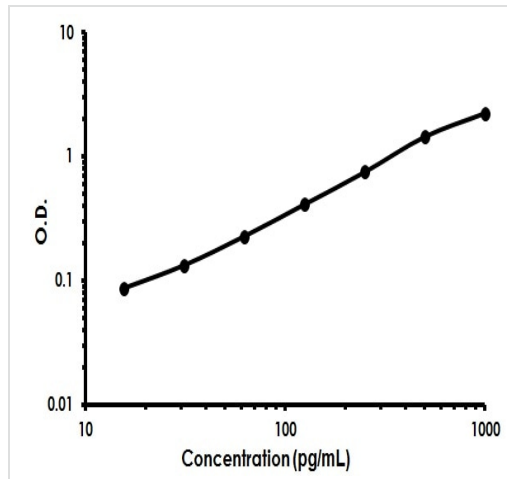
N-glycosylated.

**Cellular localization**

Membrane.

---

**Images**



Mouse TNFRSF14 ELISA Kit (HVEM) (ab213892) Standard Curve.

Mouse TNFRSF14 ELISA Kit (HVEM) (ab213892)  
Standard Curve.

**Please note:** All products are "FOR RESEARCH USE ONLY. NOT FOR USE IN DIAGNOSTIC PROCEDURES"

---

**Our Abpromise to you: Quality guaranteed and expert technical support**

- Replacement or refund for products not performing as stated on the datasheet
- Valid for 12 months from date of delivery
- Response to your inquiry within 24 hours
- We provide support in Chinese, English, French, German, Japanese and Spanish
- Extensive multi-media technical resources to help you
- We investigate all quality concerns to ensure our products perform to the highest standards

If the product does not perform as described on this datasheet, we will offer a refund or replacement. For full details of the Abpromise, please visit <https://www.abcam.com/abpromise> or contact our technical team.

---

**Terms and conditions**

- Guarantee only valid for products bought direct from Abcam or one of our authorized distributors