

Mouse UCHL1 ELISA Kit ab235641

Recombinant SimpleStep ELISA®

★★★★★ 1 Abreviews 5 Images

Overview

Product name Mouse UCHL1 ELISA Kit

Detection method Colorimetric

Precision	Intra-assay			
	Sample	n	Mean	SD
	Ms Brain Ext	9		3.5%

	Inter-assay			
	Sample	n	Mean	SD
	Ms Brain Ext	3		10.8%

Sample type Cell culture extracts, Tissue Extracts

Assay type Sandwich (quantitative)

Sensitivity 7.2 pg/ml

Range 156.3 pg/ml - 10000 pg/ml

Recovery	Sample specific recovery	
	Sample type	Average %
	Cell culture extracts	110
	Range	109% - 110%
	Tissue Extracts	108
		107% - 108%

Assay time 1h 30m

Assay duration One step assay

Species reactivity Reacts with: Mouse

Product overview Mouse UCHL1 ELISA Kit (ab235641) is a single-wash 90 min sandwich ELISA designed for the quantitative measurement of UCHL1 protein in cell culture extracts and tissue extracts. It uses our proprietary SimpleStep ELISA® technology. Quantitate Mouse UCHL1 with 7.2 pg/ml sensitivity.

SimpleStep ELISA® technology employs capture antibodies conjugated to an affinity tag that is recognized by the monoclonal antibody used to coat our SimpleStep ELISA® plates. This approach to sandwich ELISA allows the formation of the antibody-analyte sandwich complex in a single step, significantly reducing assay time. See the SimpleStep ELISA® protocol summary in the image section for further details. Our SimpleStep ELISA® technology provides several benefits:

- Single-wash protocol reduces assay time to 90 minutes or less
- High sensitivity, specificity and reproducibility from superior antibodies
- Fully validated in biological samples
- 96-wells plate breakable into 12 x 8 wells strips

A 384-well SimpleStep ELISA® microplate (**ab203359**) is available to use as an alternative to the 96-well microplate provided with SimpleStep ELISA® kits.

## Notes

Abcam has not and does not intend to apply for the REACH Authorisation of customers' uses of products that contain European Authorisation list (Annex XIV) substances. It is the responsibility of our customers to check the necessity of application of REACH Authorisation, and any other relevant authorisations, for their intended uses.

## Platform

Pre-coated microplate (12 x 8 well strips)

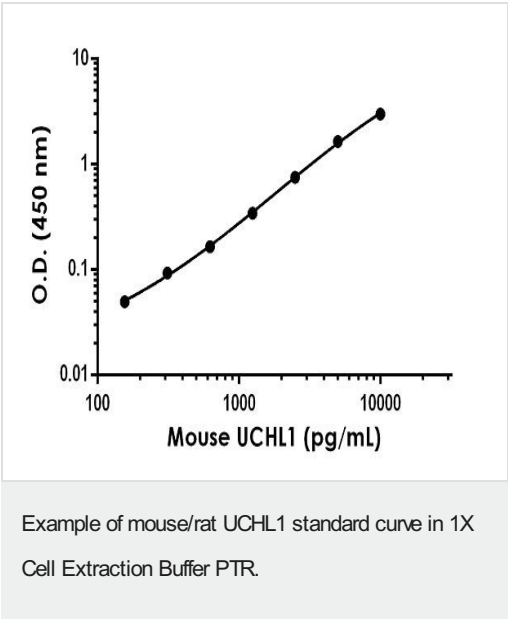
## Properties

**Storage instructions** Store at +4°C. Please refer to protocols.

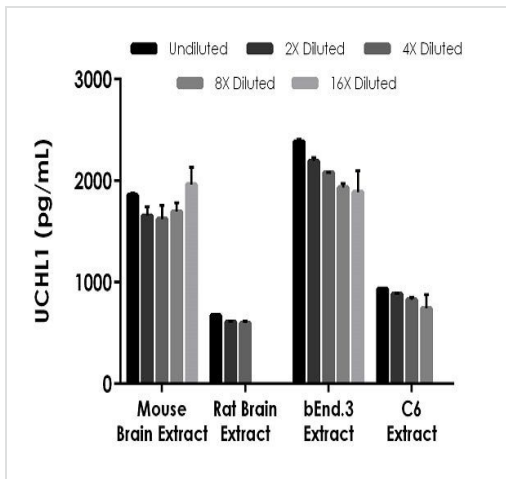
Components	1 x 96 tests	1 x 96 tests
10X Mouse/Rat UCHL1 Capture Antibody	1 x 600µl	1 x 600µl
10X Mouse/Rat UCHL1 Detector Antibody	1 x 600µl	1 x 600µl
10X Wash Buffer PT (ab206977)	1 x 20ml	1 x 20ml
50X Cell Extraction Enhancer Solution (ab193971)	1 x 1ml	1 x 1ml
5X Cell Extraction Buffer PTR (ab193970)	1 x 10ml	1 x 10ml
Antibody Diluent CPI2	1 x 6ml	1 x 6ml
Mouse/Rat UCHL1 Lyophilized Recombinant Protein	2 vials	2 vials
Plate Seals	1 unit	1 unit
Sample Diluent NS (ab193972)	1 x 12ml	1 x 12ml
SimpleStep Pre-Coated 96-Well Microplate (ab206978)	1 unit	1 unit
Stop Solution	1 x 12ml	1 x 12ml
TMB Development Solution	1 x 12ml	1 x 12ml

<b>Function</b>	Ubiquitin-protein hydrolase involved both in the processing of ubiquitin precursors and of ubiquitinated proteins. This enzyme is a thiol protease that recognizes and hydrolyzes a peptide bond at the C-terminal glycine of ubiquitin. Also binds to free monoubiquitin and may prevent its degradation in lysosomes. The homodimer may have ATP-independent ubiquitin ligase activity.
<b>Tissue specificity</b>	Found in neuronal cell bodies and processes throughout the neocortex (at protein level). Expressed in neurons and cells of the diffuse neuroendocrine system and their tumors. Weakly expressed in ovary. Down-regulated in brains from Parkinson disease and Alzheimer disease patients.
<b>Involvement in disease</b>	Parkinson disease 5 Neurodegeneration with optic atrophy, childhood-onset
<b>Sequence similarities</b>	Belongs to the peptidase C12 family.
<b>Post-translational modifications</b>	O-glycosylated.
<b>Cellular localization</b>	Cytoplasm. Endoplasmic reticulum membrane. About 30% of total UCHL1 is associated with membranes in brain.

Images

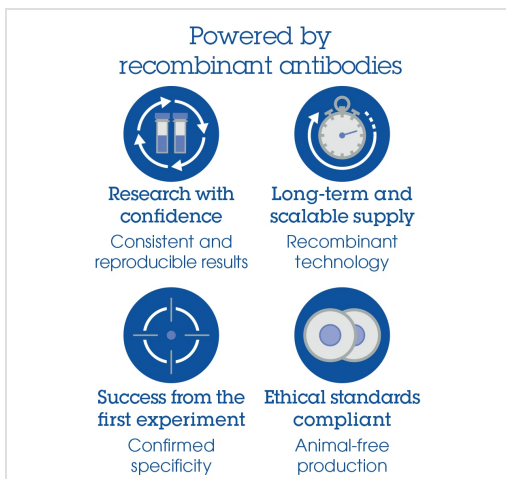


The UCHL1 standard curve was prepared as described in Section 10. Raw data values are shown in the table. Background-subtracted data values (mean +/- SD) are graphed.



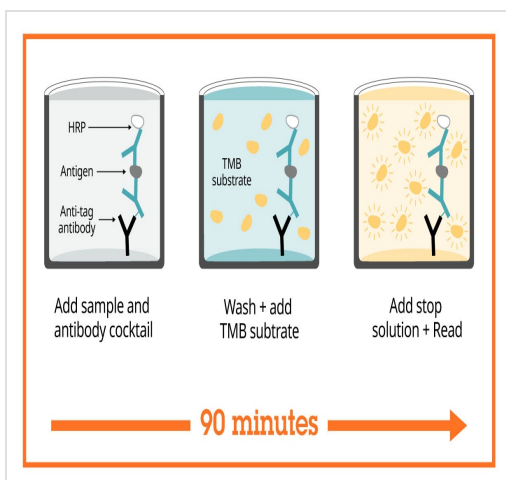
Interpolated concentrations of native UCHL1 in mouse brain extract, rat brain extract, bEnd.3 cell extract (mouse), and C6 cell extract (rat) samples.

The concentrations of UCHL1 were measured in duplicates, interpolated from the UCHL1 standard curves and corrected for sample dilution. Undiluted samples are as follows: mouse brain extract 2,500 ng/mL, rat brain extract 625 ng/mL, bEnd.3 extract 250 µg/mL, and C6 extract 3,750 ng/mL. The interpolated dilution factor corrected values are plotted (mean +/- SD, n=2).



To learn more about the advantages of recombinant antibodies see [here](#).

Sandwich ELISA - Mouse UCHL1 ELISA Kit  
(ab235641)



SimpleStep ELISA technology allows the formation of the antibody-antigen complex in one single step, reducing assay time to 90 minutes. Add samples or standards and antibody mix to wells all at once, incubate, wash, and add your final substrate. See protocol for a detailed step-by-step guide.

Sandwich ELISA - Mouse UCHL1 ELISA Kit  
(ab235641)

**Get more done with  
SimpleStep ELISA**



**Easy to use**  
Single-wash 90-minute  
protocol



**Flexible**  
Matched antibody pairs  
available



**Precision antibodies**  
High sensitivity, specificity  
and reproducibility



**Scalable**  
Now in 10-pack and  
384-well formats

To learn more about the advantages of SimpleStep ELISA® kits  
see [here](#).

Sandwich ELISA - Mouse UCHL1 ELISA Kit  
(ab235641)

**Please note:** All products are "FOR RESEARCH USE ONLY. NOT FOR USE IN DIAGNOSTIC PROCEDURES"

### Our Abpromise to you: Quality guaranteed and expert technical support

---

- Replacement or refund for products not performing as stated on the datasheet
- Valid for 12 months from date of delivery
- Response to your inquiry within 24 hours
- We provide support in Chinese, English, French, German, Japanese and Spanish
- Extensive multi-media technical resources to help you
- We investigate all quality concerns to ensure our products perform to the highest standards

If the product does not perform as described on this datasheet, we will offer a refund or replacement. For full details of the Abpromise, please visit <https://www.abcam.com/abpromise> or contact our technical team.

### Terms and conditions

---

- Guarantee only valid for products bought direct from Abcam or one of our authorized distributors