

Mouse/Rat Bcl-xL ELISA Kit ab227899

Recombinant SimpleStep ELISA®

3 References 6 Images

Overview

Product name	Mouse/Rat Bcl-xL ELISA Kit				
Detection method	Colorimetric				
Precision	Intra-assay				
	Sample	n	Mean	SD	CV%
	L929	3			5.7%
	Inter-assay				
	Sample	n	Mean	SD	CV%
	L929	5			9.1%
Sample type	Cell culture extracts, Tissue Extracts				
Assay type	Sandwich (quantitative)				
Sensitivity	28 pg/ml				
Range	0.19 pg/ml - 12 pg/ml				
Recovery	Sample specific recovery				
	Sample type		Average %		Range
	Cell culture extracts		83		81% - 86%
	Mouse brain extract		105		94% - 111%
Assay time	1h 30m				
Assay duration	One step assay				
Species reactivity	Reacts with: Mouse, Rat				
Product overview	Mouse/Rat Bcl-xL ELISA Kit (ab227899) is a single-wash 90 min sandwich ELISA designed for the quantitative measurement of Bcl-xL protein in cell culture extracts and tissue extracts. It uses our proprietary SimpleStep ELISA® technology. Quantitate Mouse/Rat Bcl-xL with 28 pg/ml sensitivity.				

SimpleStep ELISA® technology employs capture antibodies conjugated to an affinity tag that is recognized by the monoclonal antibody used to coat our SimpleStep ELISA® plates. This approach to sandwich ELISA allows the formation of the antibody-analyte sandwich complex in a single step, significantly reducing assay time. See the SimpleStep ELISA® protocol summary in the image section for further details. Our SimpleStep ELISA® technology provides several benefits:

- Single-wash protocol reduces assay time to 90 minutes or less
- High sensitivity, specificity and reproducibility from superior antibodies
- Fully validated in biological samples
- 96-wells plate breakable into 12 x 8 wells strips

A 384-well SimpleStep ELISA® microplate ([ab203359](#)) is available to use as an alternative to the 96-well microplate provided with SimpleStep ELISA® kits.

Notes

Abcam has not and does not intend to apply for the REACH Authorisation of customers' uses of products that contain European Authorisation list (Annex XIV) substances. It is the responsibility of our customers to check the necessity of application of REACH Authorisation, and any other relevant authorisations, for their intended uses.

Platform

Pre-coated microplate (12 x 8 well strips)

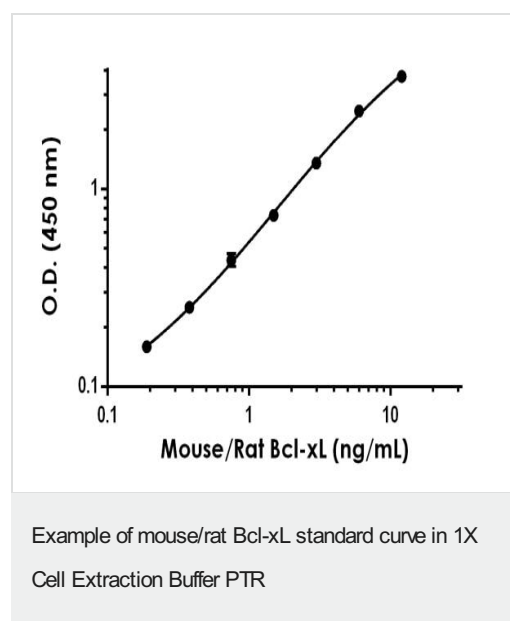
Properties

Storage instructions Store at +4°C. Please refer to protocols.

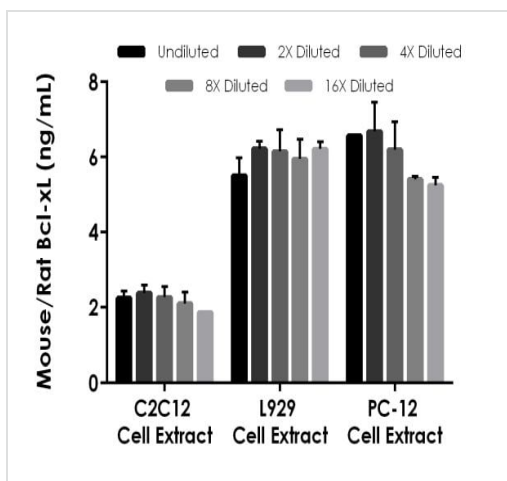
Components	1 x 96 tests
10X Mouse/Rat Bcl-xL Capture Antibody	1 x 600µl
10X Mouse/Rat Bcl-xL Detector Antibody	1 x 600µl
10X Wash Buffer PT (ab206977)	1 x 20ml
50X Cell Extraction Enhancer Solution (ab193971)	1 x 1ml
5X Cell Extraction Buffer PTR (ab193970)	1 x 10ml
Antibody Diluent 5BR	1 x 6ml
Mouse/Rat Bcl-xL Lyophilized Recombinant Protein	2 vials
Plate Seals	1 unit
Sample Diluent NS (ab193972)	1 x 12ml
SimpleStep Pre-Coated 96-Well Microplate (ab206978)	1 unit
Stop Solution	1 x 12ml
TMB Development Solution	1 x 12ml

Function	Potent inhibitor of cell death. Inhibits activation of caspases (By similarity). Appears to regulate cell death by blocking the voltage-dependent anion channel (VDAC) by binding to it and preventing the release of the caspase activator, CYC1, from the mitochondrial membrane. Isoform Bcl-X(S) promotes apoptosis.
Tissue specificity	Bcl-X(S) is expressed at high levels in cells that undergo a high rate of turnover, such as developing lymphocytes. In contrast, Bcl-X(L) is found in tissues containing long-lived postmitotic cells, such as adult brain.
Sequence similarities	Belongs to the Bcl-2 family.
Domain	The BH4 motif is required for anti-apoptotic activity. The BH1 and BH2 motifs are required for both heterodimerization with other Bcl-2 family members and for repression of cell death.
Post-translational modifications	Proteolytically cleaved by caspases during apoptosis. The cleaved protein, lacking the BH4 motif, has pro-apoptotic activity.
Cellular localization	Mitochondrion membrane. Nucleus membrane. Mitochondrial membranes and perinuclear envelope.

Images

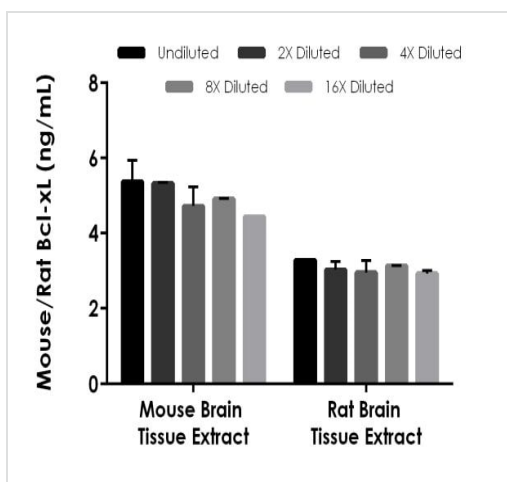


Background-subtracted data values (mean \pm SD) are graphed.



Interpolated concentrations of native Bcl-xL in C2C12 cell extract, L929 cell extract based on a 300 µg/mL extract load, and PC-12 cell extract samples based on a 150 µg/mL extract load

The concentrations of Bcl-xL were measured in duplicate and interpolated from the Bcl-xL standard curve and corrected for sample dilution. The interpolated dilution factor corrected values are plotted (mean \pm SD, n=2). The mean Bcl-xL concentration was determined to be 2.176 ng/mL in C2C12 cell extract, 6.010 ng/mL in L929 cell extract, and 6.022 ng/mL in PC-12 cell extract.



Interpolated concentrations of native Bcl-xL in mouse and rat brain tissue extract samples based on a 300 µg/mL extract load

The concentrations of Bcl-xL were measured in duplicate and interpolated from the Bcl-xL standard curve and corrected for sample dilution. The interpolated dilution factor corrected values are plotted (mean \pm SD, n=2). The mean Bcl-xL concentration was determined to be 4.957 ng/mL in mouse brain tissue extract, and 3.067 ng/mL in rat brain tissue extract.

Powered by
recombinant antibodies



Research with confidence
Consistent and reproducible results



Long-term and scalable supply
Recombinant technology



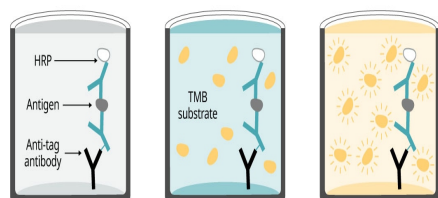
Success from the first experiment
Confirmed specificity



Ethical standards compliant
Animal-free production

Sandwich ELISA - Mouse/Rat Bcl-xL ELISA Kit
(ab227899)

To learn more about the advantages of recombinant antibodies see [here](#).



Add sample and
antibody cocktail

Wash + add
TMB substrate

Add stop
solution + Read

90 minutes

SimpleStep ELISA technology allows the formation of the antibody-antigen complex in one single step, reducing assay time to 90 minutes. Add samples or standards and antibody mix to wells all at once, incubate, wash, and add your final substrate. See protocol for a detailed step-by-step guide.

Sandwich ELISA - Mouse/Rat Bcl-xL ELISA Kit
(ab227899)

**Get more done with
SimpleStep ELISA**



Easy to use
Single-wash 90-minute protocol



Flexible
Matched antibody pairs available



Precision antibodies
High sensitivity, specificity and reproducibility



Scalable
Now in 10-pack and 384-well formats

Sandwich ELISA - Mouse/Rat Bcl-xL ELISA Kit
(ab227899)

To learn more about the advantages of SimpleStep ELISA[®] kits see [here](#).

Please note: All products are "FOR RESEARCH USE ONLY. NOT FOR USE IN DIAGNOSTIC PROCEDURES"

Our Abpromise to you: Quality guaranteed and expert technical support

- Replacement or refund for products not performing as stated on the datasheet
- Valid for 12 months from date of delivery
- Response to your inquiry within 24 hours

- We provide support in Chinese, English, French, German, Japanese and Spanish
- Extensive multi-media technical resources to help you
- We investigate all quality concerns to ensure our products perform to the highest standards

If the product does not perform as described on this datasheet, we will offer a refund or replacement. For full details of the Abpromise, please visit <https://www.abcam.com/abpromise> or contact our technical team.

Terms and conditions

- Guarantee only valid for products bought direct from Abcam or one of our authorized distributors