

Prostaglandin E1 ELISA Kit ab133024

★★★★★ 1 Abreviews 1 Image

Overview

Product name Prostaglandin E1 ELISA Kit

Detection method Colorimetric

Precision	Intra-assay				
	Sample	n	Mean	SD	CV%
	Low	24	53pg/ml		4.6%
	Medium	24	246pg/ml		9.5%
	High	24	1103pg/ml		13.7%

	Inter-assay				
	Sample	n	Mean	SD	CV%
	Low	8	49pg/ml		9.3%
	Medium	8	214pg/ml		11%
	High	8	737pg/ml		6.2%

Sample type Cell culture supernatant, Saliva, Urine, Serum, Plasma, Tissue Culture Media

Assay type Competitive

Sensitivity 5.58 pg/ml

Range 4.88 pg/ml - 5000 pg/ml

Recovery	Sample specific recovery		
	Sample type	Average %	Range
	Saliva	107.2	% - %
	Urine	109.9	% - %
	Serum	87	% - %

Sample type	Average %	Range
Plasma	107.7	% - %
Tissue Culture Media		90% - 110%

Assay time

3h 0m

Assay duration

Multiple steps standard assay

Species reactivity

Reacts with: Human

Predicted to work with: a wide range of other species 

Product overview

Abcam's Prostaglandin E₁ *in vitro* competitive ELISA (Enzyme-Linked Immunosorbent Assay) kit is designed for the accurate quantitative measurement of Prostaglandin E₁ in, plasma, serum, urine, tissue culture media and other biological fluids.

A donkey anti-sheep IgG antibody has been precoated onto 96-well plates. Standards or test samples are added to the wells, along with an alkaline phosphatase (AP) conjugated-PGE₁ antigen and a polyclonal sheep antibody specific to PGE₁. After incubation the excess reagents are washed away. pNpp substrate is added and after a short incubation the Alkaline Phosphatase enzyme reaction is stopped and the yellow color generated is read at 405 nm. The intensity of the yellow coloration is inversely proportional to the amount of PGE₁ captured in the plate.

Notes

Prostaglandin E₁ (PGE₁) is synthesized from dihomo- γ -linolenic acid (DGLA). PGE₁ has been shown to have a number of biological actions, including vasodilation, proliferation of vascular smooth muscle cells, platelet aggregation and has been shown to have insulin-like actions. Its effects are induced by receptor mediated elevation of cAMP. PGE₁ is the major prostaglandin in semen.

Cross Reactivity

Compound	Cross Reactivity
PGE ₁	100%
PGE ₂	6.50%
PGE ₃	2.22%
13,14-dihydro-PGE ₁	1.50%
PGE ₀	1.45%
15-keto-PGE ₁	1.15%
13,14-dihydro-15-keto-PGE ₁	0.19%
PGF _{1α}	0.14%

PGF _{2α}	0.04%
6-keto-PGF _{1α}	<0.1%
PGA ₂	<0.1%
PGD ₂	<0.1%
PGB ₁	<0.1%
13,14-dihydro-15-keto-PGF _{2α}	<0.1%
6,15-keto-13,14-dihydro-PGF _{1α}	<0.1%
Thromboxane B ₂	<0.1%
Misoprostol	<0.1%
2-Arachidonoylglycerol	<0.1%
Anandamide	<0.1%

Platform

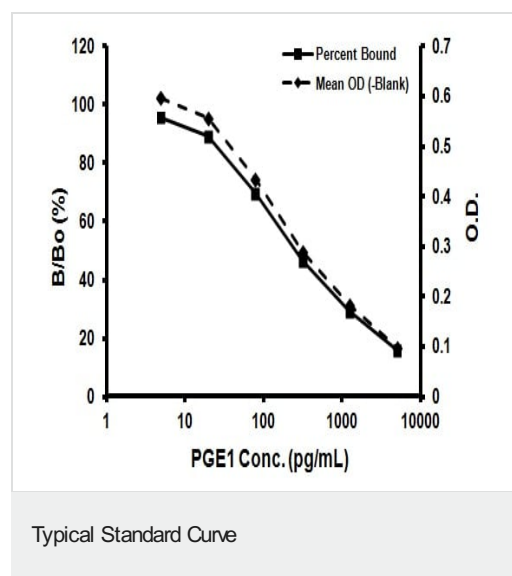
Microplate

Properties

Storage instructions

Please refer to protocols.

Components	1 x 96 tests
20X Wash Buffer Concentrate	1 x 27ml
Assay Buffer	1 x 27ml
Donkey anti-sheep IgG Microplate (12 x 8 wells)	1 unit
PGE1 Alkaline Phosphatase Conjugate	1 x 5ml
PGE1 Standard	1 x 500μl
PGE1 Antibody	1 x 5ml
Plate Sealer	1 unit
pNpp Substrate	1 x 20ml
Stop Solution	1 x 5ml



Representative Standard Curve using ab133024

Please note: All products are "FOR RESEARCH USE ONLY. NOT FOR USE IN DIAGNOSTIC PROCEDURES"

Our Abpromise to you: Quality guaranteed and expert technical support

- Replacement or refund for products not performing as stated on the datasheet
- Valid for 12 months from date of delivery
- Response to your inquiry within 24 hours
- We provide support in Chinese, English, French, German, Japanese and Spanish
- Extensive multi-media technical resources to help you
- We investigate all quality concerns to ensure our products perform to the highest standards

If the product does not perform as described on this datasheet, we will offer a refund or replacement. For full details of the Abpromise, please visit <https://www.abcam.com/abpromise> or contact our technical team.

Terms and conditions

- Guarantee only valid for products bought direct from Abcam or one of our authorized distributors