

Rat CXCL3 ELISA Kit ab213927

1 Image

Overview

Product nameRat CXCL3 ELISA Kit

Detection methodColorimetric

PrecisionIntra-assay

Sample	n	Mean	SD	CV%
1	16	40pg/ml	2.84	= 7.1%
2	16	190pg/ml	14.82	= 7.8%
3	16	394pg/ml	19.3	= 4.9%

Inter-assay

Sample	n	Mean	SD	CV%
1	24	43pg/ml	3.09	= 7.2%
2	24	206pg/ml	19.98	= 9.7%
3	24	390pg/ml	20.28	= 5.2%

Sample typeCell culture supernatant, Serum, Cell Lysate, Hep Plasma, EDTA Plasma

Assay typeSandwich

Sensitivity< 10 pg/ml

Range15.6 pg/ml - 1000 pg/ml

Assay time3h 30m

Assay durationMultiple steps standard assay

Species reactivityReacts with: Rat

Product overviewThe Rat CXCL3 Enzyme-Linked Immunosorbent Assay (ELISA) kit (ab213927) is designed for the quantitative measurement of Rat CXCL3 in cell culture supernatants, cell lysates, serum and plasma (heparin, EDTA).

The ELISA kit is based on standard sandwich enzyme-linked immune-sorbent assay technology.

A monoclonal antibody from mouse specific for CXCL3 has been precoated onto 96-well plates. Standards and test samples are added to the wells; a biotinylated detection polyclonal antibody from goat specific for CXCL3 is added subsequently and then followed by washing with PBS or TBS buffer. Avidin-Biotin-Peroxidase Complex was added and unbound conjugates were washed away with PBS or TBS buffer. HRP substrate TMB was used to visualize HRP enzymatic reaction. TMB was catalyzed by HRP to produce a blue color product that changed into yellow after adding acidic stop solution. The density of yellow is proportional to the Rat CXCL3 amount of sample captured in plate.

**Notes** Chemokine (C-X-C motif) ligand 3 (CXCL3) is a small cytokine belonging to the CXC chemokine family. It is mapped to 14p2 in rat. CXCL3 controls migration and adhesion of monocytes and mediates its effects on its target cell by interacting with a cell surface chemokine receptor. It has been shown that CXCL3 regulates cell autonomously the migration of the precursors of cerebellar granule neurons toward the internal layers of cerebellum, during the morphogenesis of cerebellum. CXCL3 has effects on cells of the central nervous system as well as on endothelial cells involved in angiogenesis or angiostasis.

**Platform** Pre-coated microplate (12 x 8 well strips)

## Properties

**Storage instructions** Store at -20°C. Please refer to protocols.

Components	Identifier	1 x 96 tests
ABC Diluent Buffer	Blue Cap	1 x 12ml
Adhesive Plate Seal		4 units
Antibody Diluent Buffer	Green Cap	1 x 12ml
Anti-rat CXCL3 coated Microplate (12 x 8 wells)		1 unit
Avidin-Biotin-Peroxidase Complex (ABC)		1 x 100µl
Biotinylated anti- rat CXCL3 antibody		1 x 100µl
Lyophilized recombinant rat CXCL3 standard		2 vials
Sample Diluent Buffer	Green Cap	1 x 30ml
TMB Color Developing Agent	Black Cap	1 x 10ml
TMB Stop Solution	Yellow Cap	1 x 10ml
Wash Buffer (25X)		1 x 20ml

**Function** Ligand for CXCR2 (By similarity). Has chemotactic activity for neutrophils. May play a role in inflammation and exert its effects on endothelial cells in an autocrine fashion. In vitro, the processed form GRO-gamma(5-73) shows a fivefold higher chemotactic activity for neutrophilic granulocytes.

**Sequence similarities** Belongs to the intercrine alpha (chemokine CxC) family.

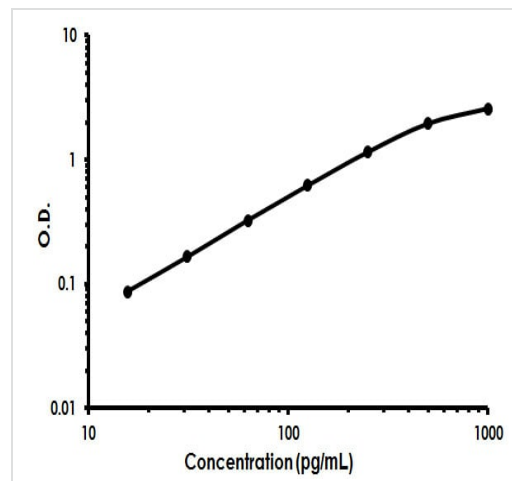
**Post-translational  
modifications**

N-terminal processed form GRO-gamma(5-73) is produced by proteolytic cleavage after secretion from peripheral blood monocytes.

**Cellular localization**

Secreted.

**Images**



Rat CXCL3 ELISA Kit (ab213927) Standard Curve.

Rat CXCL3 ELISA Kit (ab213927) Standard Curve.

**Please note:** All products are "FOR RESEARCH USE ONLY. NOT FOR USE IN DIAGNOSTIC PROCEDURES"

**Our Abpromise to you: Quality guaranteed and expert technical support**

- Replacement or refund for products not performing as stated on the datasheet
- Valid for 12 months from date of delivery
- Response to your inquiry within 24 hours
- We provide support in Chinese, English, French, German, Japanese and Spanish
- Extensive multi-media technical resources to help you
- We investigate all quality concerns to ensure our products perform to the highest standards

If the product does not perform as described on this datasheet, we will offer a refund or replacement. For full details of the Abpromise, please visit <https://www.abcam.com/abpromise> or contact our technical team.

**Terms and conditions**

- Guarantee only valid for products bought direct from Abcam or one of our authorized distributors