

Rat Fractalkine ELISA Kit ab229890

Recombinant SimpleStep ELISA[®]

7 Images

Overview

Product name Rat Fractalkine ELISA Kit

Detection method Colorimetric

Precision Intra-assay

Sample	n	Mean	SD	CV%
Rat serum	5			7.2%

Inter-assay

Sample	n	Mean	SD	CV%
Rat serum	3			4%

Sample type Cell culture supernatant, Serum, Hep Plasma, EDTA Plasma, Cit plasma

Assay type Sandwich (quantitative)

Sensitivity 9.8 pg/ml

Range 16 pg/ml - 1000 pg/ml

Recovery Sample specific recovery

Sample type	Average %	Range
Serum	102	93% - 111%
Cell culture media	112	111% - 113%
Hep Plasma	112	104% - 116%
EDTA Plasma	95	89% - 101%
Cit plasma	81	79% - 84%

Assay time 1h 30m

Assay duration One step assay

Species reactivity**Reacts with:** Rat**Does not react with:** Cow**Product overview**

Rat Fractalkine ELISA Kit (ab229890) is a single-wash 90 min sandwich ELISA designed for the quantitative measurement of Fractalkine protein in cell culture supernatant, cit plasma, edta plasma, hep plasma, and serum. It uses our proprietary SimpleStep ELISA® technology. Quantitate Rat Fractalkine with 9.8 pg/ml sensitivity.

SimpleStep ELISA® technology employs capture antibodies conjugated to an affinity tag that is recognized by the monoclonal antibody used to coat our SimpleStep ELISA® plates. This approach to sandwich ELISA allows the formation of the antibody-analyte sandwich complex in a single step, significantly reducing assay time. See the SimpleStep ELISA® protocol summary in the image section for further details. Our SimpleStep ELISA® technology provides several benefits:

- Single-wash protocol reduces assay time to 90 minutes or less
- High sensitivity, specificity and reproducibility from superior antibodies
- Fully validated in biological samples
- 96-wells plate breakable into 12 x 8 wells strips

A 384-well SimpleStep ELISA® microplate (**ab203359**) is available to use as an alternative to the 96-well microplate provided with SimpleStep ELISA® kits.

Platform

Pre-coated microplate (12 x 8 well strips)

Properties**Storage instructions**

Store at +4°C. Please refer to protocols.

Components	1 x 96 tests
10X Rat Fractalkine Capture Antibody	1 x 600µl
10X Rat Fractalkine Detector Antibody	1 x 600µl
10X Wash Buffer PT (ab206977)	1 x 20ml
Antibody Diluent 4BR	1 x 6ml
Plate Seals	1 unit
Rat Fractalkine Lyophilized Recombinant Protein	2 vials
Sample Diluent NS (ab193972)	1 x 50ml
SimpleStep Pre-Coated 96-Well Microplate (ab206978)	1 unit
Stop Solution	1 x 12ml
TMB Development Solution	1 x 12ml

Function

The soluble form is chemotactic for T-cells and monocytes, but not for neutrophils. The membrane-

bound form promotes adhesion of those leukocytes to endothelial cells. May play a role in regulating leukocyte adhesion and migration processes at the endothelium. Binds to CX3CR1.

Tissue specificity

Small intestine, colon, testis, prostate, heart, brain, lung, skeletal muscle, kidney and pancreas.

Sequence similarities

Belongs to the intercrine delta family.

Post-translational modifications

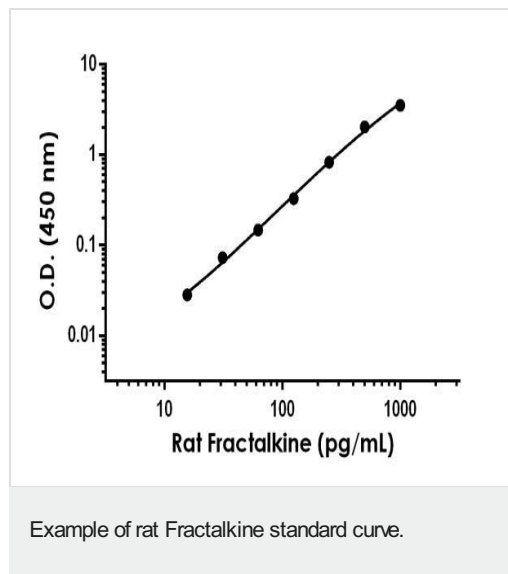
A soluble short 95 kDa form may be released by proteolytic cleavage from the long membrane-anchored form.

O-glycosylated with core 1 or possibly core 8 glycans.

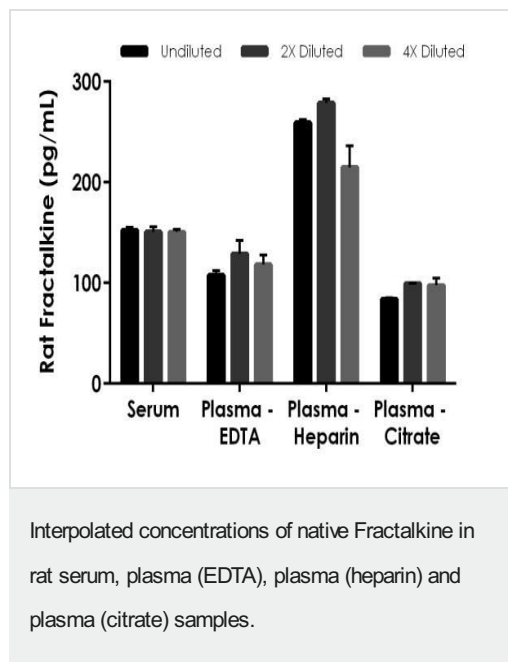
Cellular localization

Secreted and Cell membrane.

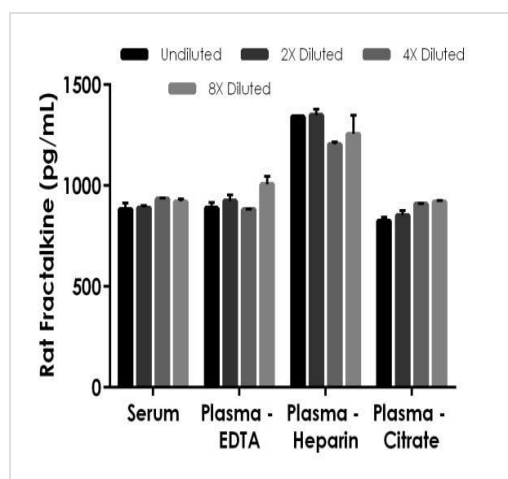
Images



The Fractalkine standard curve was prepared as described in Section 10. Background-subtracted data values (mean \pm SD) are graphed.

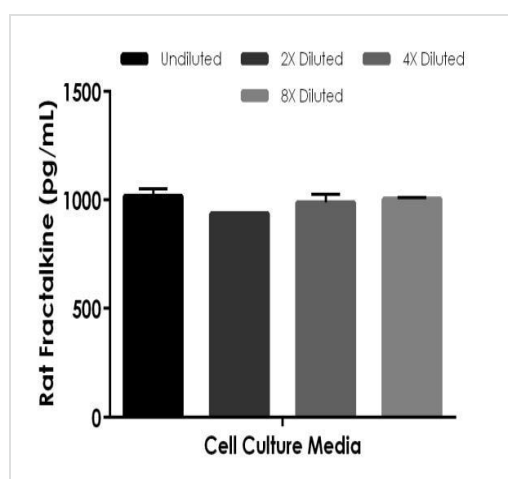


The concentrations of Fractalkine were measured in duplicates, interpolated from the Fractalkine standard curves and corrected for sample dilution. Undiluted samples are as follows: serum 100%, plasma (EDTA) 100%, plasma (heparin) 50% and plasma (citrate) 100%. The interpolated dilution factor corrected values are plotted (mean \pm SD, $n=2$). The mean Fractalkine concentration was determined to be 151 ng/mL in serum, 118 ng/mL in plasma (EDTA) 250 ng/mL in plasma (heparin), and 93 ng/mL in plasma (citrate).



Interpolated concentrations of spike Fractalkine in rat serum, plasma (EDTA), plasma (heparin) and plasma (citrate) samples.

The concentrations of Fractalkine were measured in duplicates, interpolated from the Fractalkine standard curves and corrected for sample dilution. Undiluted samples are as follows: serum 50%, plasma (EDTA) 50%, plasma (heparin) 50% and plasma (citrate) 50%. The interpolated dilution factor corrected values are plotted (mean \pm SD, n=2).



Interpolated concentrations of spike Fractalkine in rat cell culture media sample.

The concentrations of Fractalkine were measured in duplicates, interpolated from the Fractalkine standard curves and corrected for sample dilution. Undiluted samples are as follows: cell culture media 50%. The interpolated dilution factor corrected values are plotted (mean \pm SD, n=2).

Powered by
recombinant antibodies



Research with confidence
Consistent and reproducible results



Long-term and scalable supply
Recombinant technology



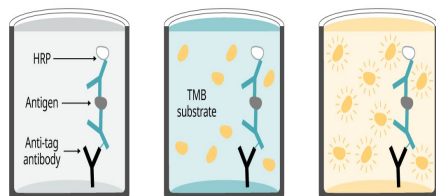
Success from the first experiment
Confirmed specificity



Ethical standards compliant
Animal-free production

Sandwich ELISA - Rat Fractalkine ELISA Kit
(ab229890)

To learn more about the advantages of recombinant antibodies see [here](#).



Add sample and antibody cocktail

Wash + add TMB substrate

Add stop solution + Read

90 minutes

SimpleStep ELISA technology allows the formation of the antibody-antigen complex in one single step, reducing assay time to 90 minutes. Add samples or standards and antibody mix to wells all at once, incubate, wash, and add your final substrate. See protocol for a detailed step-by-step guide.

Sandwich ELISA - Rat Fractalkine ELISA Kit
(ab229890)

Get more done with SimpleStep ELISA



Easy to use
Single-wash 90-minute protocol



Flexible
Matched antibody pairs available



Precision antibodies
High sensitivity, specificity and reproducibility



Scalable
Now in 10-pack and 384-well formats

Sandwich ELISA - Rat Fractalkine ELISA Kit
(ab229890)

To learn more about the advantages of SimpleStep ELISA[®] kits see [here](#).

Please note: All products are "FOR RESEARCH USE ONLY. NOT FOR USE IN DIAGNOSTIC PROCEDURES"

Our Abpromise to you: Quality guaranteed and expert technical support

- Replacement or refund for products not performing as stated on the datasheet
- Valid for 12 months from date of delivery
- Response to your inquiry within 24 hours

- We provide support in Chinese, English, French, German, Japanese and Spanish
- Extensive multi-media technical resources to help you
- We investigate all quality concerns to ensure our products perform to the highest standards

If the product does not perform as described on this datasheet, we will offer a refund or replacement. For full details of the Abpromise, please visit <https://www.abcam.com/abpromise> or contact our technical team.

Terms and conditions

- Guarantee only valid for products bought direct from Abcam or one of our authorized distributors