

3 Images

Product name	Rat IgG ELISA Kit
---------------------	-------------------

Detection method	Colorimetric
------------------	--------------

Precision

Intra-assay

Sample	n	Mean	SD	CV%
Overall				< 10%

Inter-assay

Sample	n	Mean	SD	CV%
Overall				< 10%

Sample type	Serum, Plasma
--------------------	---------------

Assay type	Sandwich (quantitative)
-------------------	-------------------------

Sensitivity 4.5349 ng/ml

Range	25 ng/ml - 800 ng/ml
--------------	----------------------

Recovery

Sample specific recovery

Sample type	Average %	Range
Serum	> 85	% - %

Assay duration	Multiple steps standard assay
-----------------------	-------------------------------

Species reactivity **Reacts with:** Rat

Product overview Abcam's IgG Rat ELISA kit is an *in vitro* enzyme-linked immunosorbent assay (ELISA) for the quantitative measurement of IgG in rat serum and plasma samples.

In this assay the IgG present in samples reacts with the anti-IgG antibodies which have been adsorbed to the surface of polystyrene microtitre wells. After the removal of unbound proteins by washing, anti-IgG antibodies conjugated with horseradish peroxidase (HRP) are added. These enzyme-labeled antibodies form complexes with the previously bound IgG. Following another washing step, the enzyme bound to the immunosorbent is assayed by the addition of a chromogenic substrate, 3,3',5,5'-tetramethylbenzidine (TMB). The quantity of bound enzyme

varies directly with the concentration of IgG in the sample tested; thus, the absorbance, at 450 nm, is a measure of the concentration of IgG in the test sample. The quantity of IgG in the test sample can be interpolated from the standard curve constructed from the standards, and corrected for sample dilution.

Get results in 90 minutes with Rat IgG ELISA Kit (**ab189578**) from our SimpleStep ELISA® range.

Platform

Microplate

Properties

Storage instructions

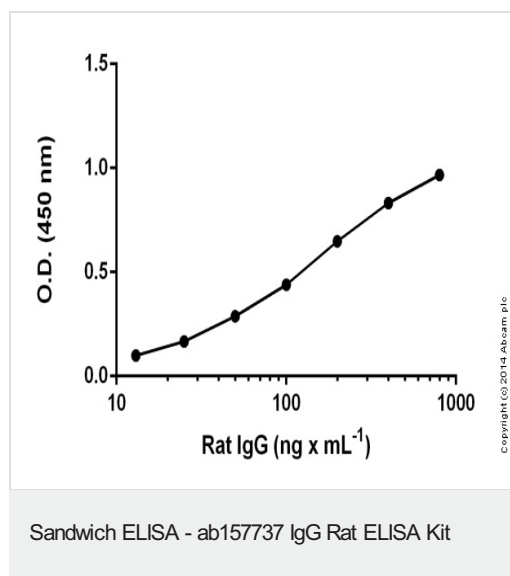
Store at +4°C. Please refer to protocols.

Components	1 x 96 tests
100X HRP-conjugated anti-rat IgG antibody	1 x 150µl
20X Wash Buffer Concentrate	1 x 50ml
5X Diluent Concentrate	1 x 50ml
Chromogen Substrate Solution	1 x 12ml
Rat IgG Calibrator (Lyophilized)	1 vial
Rat IgG ELISA Microplate	1 unit
Stop Solution	1 x 12ml

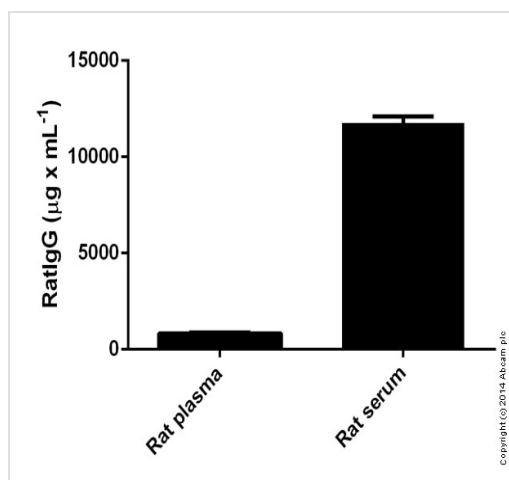
Cellular localization

Secreted

Images

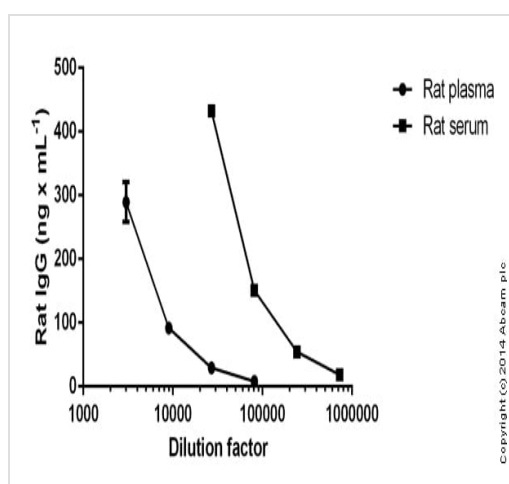


Standard curve: mean of duplicates (+/- SD) with background readings subtracted



Rat IgG measured in biofluids showing quantity (micrograms) per mL of tested sample

Sandwich ELISA - ab157737 IgG Rat ELISA Kit



Rat IgG measured in biologicals at various dilutions showing quantity (ng) per mL of tested sample

Sandwich ELISA - ab157737 IgG Rat ELISA Kit

Please note: All products are "FOR RESEARCH USE ONLY. NOT FOR USE IN DIAGNOSTIC PROCEDURES"

Our Abpromise to you: Quality guaranteed and expert technical support

- Replacement or refund for products not performing as stated on the datasheet
- Valid for 12 months from date of delivery
- Response to your inquiry within 24 hours
- We provide support in Chinese, English, French, German, Japanese and Spanish
- Extensive multi-media technical resources to help you
- We investigate all quality concerns to ensure our products perform to the highest standards

If the product does not perform as described on this datasheet, we will offer a refund or replacement. For full details of the Abpromise, please visit <https://www.abcam.com/abpromise> or contact our technical team.

Terms and conditions

- Guarantee only valid for products bought direct from Abcam or one of our authorized distributors