

## Product datasheet

### Mouse IL-18BP ELISA Kit ab254509

Recombinant SimpleStep ELISA®

★★★★★ [1 Abreviews](#) [5 Images](#)

#### Overview

**Product name** Mouse IL-18BP ELISA Kit

**Detection method** Colorimetric

**Precision**

Intra-assay

Sample	n	Mean	SD	CV%
Serum	8			3.7%

**Sample type** Serum, Cit plasma

**Assay type** Sandwich (quantitative)

**Sensitivity** 151.82 pg/ml

**Range** 468.75 pg/ml - 30000 pg/ml

**Recovery**

Sample specific recovery

Sample type	Average %	Range
Serum	97	% - %
Cit plasma	98	% - %

**Assay time** 1h 30m

**Assay duration** One step assay

**Species reactivity** **Reacts with:** Mouse

**Product overview**

Mouse IL-18BP ELISA Kit (ab254509) is a single-wash 90 min sandwich ELISA designed for the quantitative measurement of IL-18BP protein in cit plasma and serum. It uses our proprietary SimpleStep ELISA® technology. Quantitate Mouse IL-18BP with 151.82 pg/ml sensitivity.

SimpleStep ELISA® technology employs capture antibodies conjugated to an affinity tag that is recognized by the monoclonal antibody used to coat our SimpleStep ELISA® plates. This approach to sandwich ELISA allows the formation of the antibody-analyte sandwich complex in a single step, significantly reducing assay time. See the SimpleStep ELISA® protocol summary in the image section for further details. Our SimpleStep ELISA® technology provides several

benefits:

- Single-wash protocol reduces assay time to 90 minutes or less
- High sensitivity, specificity and reproducibility from superior antibodies
- Fully validated in biological samples
- 96-wells plate breakable into 12 x 8 wells strips

A 384-well SimpleStep ELISA® microplate ([ab203359](#)) is available to use as an alternative to the 96-well microplate provided with SimpleStep ELISA® kits.

**Notes** IL-18BP is a protein that binds to IL-18, preventing it from interacting with its receptor. IL-18BP inhibits the early TH1 cytokine response. IL-18 is produced constitutively by mononuclear cells.

**Platform** Pre-coated microplate (12 x 8 well strips)

## Properties

**Storage instructions** Store at +4°C. Please refer to protocols.

Components	1 x 96 tests	10 x 96 tests
10X Mouse IL-18BP Capture Antibody	1 x 600µl	1 x 6000µl
10X Mouse IL-18BP Detector Antibody	2 vials	1 x 6000µl
10X Wash Buffer PT (ab206977)	1 x 20ml	1 x 200ml
Antibody Diluent 4BR	1 x 6ml	10 x 6ml
Mouse IL-18BP Lyophilized Recombinant Protein	2 vials	2 x 10 vials
Plate Seals	1 unit	1 x 10 units
Sample Diluent NS (ab193972)	1 x 50ml	2 x 250ml
SimpleStep Pre-Coated 96-Well Microplate (ab206978)	1 unit	1 x 10 units
Stop Solution	1 x 12ml	1 x 120ml
TMB Development Solution	1 x 12ml	1 x 120ml

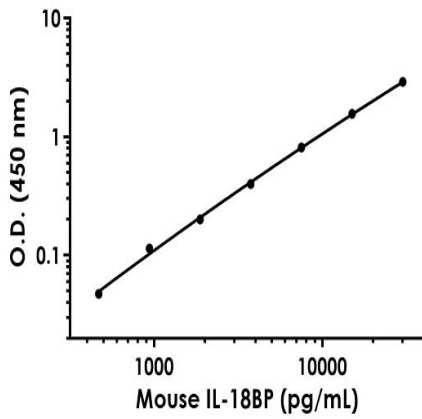
**Function** Isoform A binds to IL-18 and inhibits its activity. Functions as an inhibitor of the early TH1 cytokine response.

**Tissue specificity** Strongly expressed in heart, lung, placenta and spleen.

**Sequence similarities** Contains 1 Ig-like C2-type (immunoglobulin-like) domain.

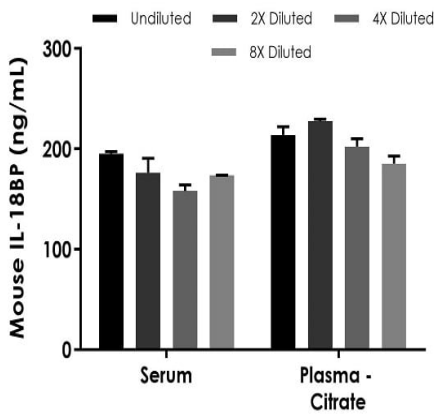
**Cellular localization** Secreted.

## Images



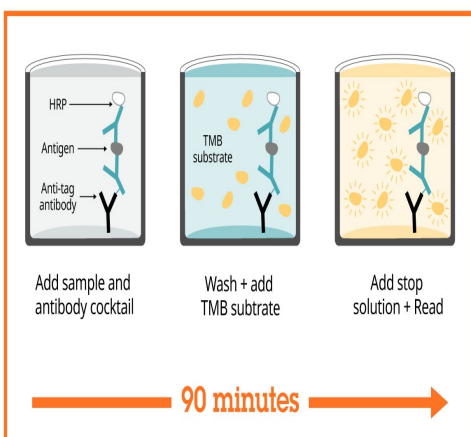
Example of mouse IL-18BP standard curve in Sample Diluent NS.

The IL-18BP standard curve was prepared as described in Section 10. Raw data values are shown in the table. Background-subtracted data values (mean +/- SD) are graphed.



Interpolated concentrations of native IL-18BP in mouse serum and plasma (citrate) samples.

The concentrations of IL-18BP were measured in duplicates, interpolated from the IL-18BP standard curves and corrected for sample dilution. Undiluted samples are as follows: serum 2.5% and plasma (citrate) 10%. The interpolated dilution factor corrected values are plotted (mean +/- SD, n=2). The mean IL-18BP concentration was determined to 175.87 ng/mL in serum and 201.01 ng/mL in plasma (citrate).



SimpleStep ELISA technology allows the formation of the antibody-antigen complex in one single step, reducing assay time to 90 minutes. Add samples or standards and antibody mix to wells all at once, incubate, wash, and add your final substrate. See protocol for a detailed step-by-step guide.

Sandwich ELISA - Mouse IL-18BP ELISA Kit (ab254509)

Powered by  
recombinant antibodies



**Research with confidence**  
Consistent and reproducible results



**Long-term and scalable supply**  
Recombinant technology



**Success from the first experiment**  
Confirmed specificity



**Ethical standards compliant**  
Animal-free production

Sandwich ELISA - Mouse IL-18BP ELISA Kit  
(ab254509)

To learn more about the advantages of recombinant antibodies see [here](#).

Get more done with  
SimpleStep ELISA



**Easy to use**  
Single-wash 90-minute protocol



**Flexible**  
Matched antibody pairs available



**Precision antibodies**  
High sensitivity, specificity and reproducibility



**Scalable**  
Now in 10-pack and 384-well formats

Sandwich ELISA - Mouse IL-18BP ELISA Kit  
(ab254509)

To learn more about the advantages of SimpleStep ELISA<sup>®</sup> kits see [here](#).

**Please note:** All products are "FOR RESEARCH USE ONLY. NOT FOR USE IN DIAGNOSTIC PROCEDURES"

### Our Abpromise to you: Quality guaranteed and expert technical support

- Replacement or refund for products not performing as stated on the datasheet
- Valid for 12 months from date of delivery
- Response to your inquiry within 24 hours
- We provide support in Chinese, English, French, German, Japanese and Spanish
- Extensive multi-media technical resources to help you
- We investigate all quality concerns to ensure our products perform to the highest standards

If the product does not perform as described on this datasheet, we will offer a refund or replacement. For full details of the Abpromise, please visit <https://www.abcam.com/abpromise> or contact our technical team.

## Terms and conditions

---

- Guarantee only valid for products bought direct from Abcam or one of our authorized distributors