

Human Beta-III Tubulin Antibody Pair - BSA and Azide free ab244131

Recombinant **RabMAb**

[2 Images](#)

Overview

Product name	Human Beta-III Tubulin Antibody Pair - BSA and Azide free
Assay type	ELISA set
Range	313 pg/ml - 20000 pg/ml
Species reactivity	Reacts with: Human
Product overview	<p>The Antibody Pair can be used to quantify Human Beta-III Tubulin. BSA and Azide free antibody pairs include unconjugated capture and detector antibodies suitable for sandwich ELISAs. The antibodies are provided at an approximate concentration of 1 mg/ml as measured by the protein A280 method. The recommended antibody orientation is based on internal optimization for ELISA-based assays. Antibody orientation is assay dependent and needs to be optimized for each assay type. Both capture and detector antibodies are rabbit monoclonal antibodies delivering consistent, specific, and sensitive results.</p> <p>For additional information on the performance of the antibody pair, see the equivalent SimpleStep ELISA® Kit (ab235644), which uses the same antibodies. However, due to differences in their formulation, this antibody pair cannot be used with the consumables provided with our SimpleStep ELISA Kits. Please note that the range provided for the pairs is only an estimation based on the performance of the related product using the same antibody pair. Performance of the antibody pair will depend on the specific characteristics of your assay. We guarantee the product works in sandwich ELISA, but we do not guarantee the sensitivity or dynamic range of the antibody pair in your assay.</p>
Tested applications	Suitable for: Sandwich ELISA
Platform	Reagents

Properties

Storage instructions	Store at +4°C. Please refer to protocols.
Carrier free	Yes

Components	10 x 96 tests
Human Beta-III Tubulin Capture Antibody (unconjugated)	1 x 100µg
Human Beta-III Tubulin Detector Antibody (unconjugated)	1 x 100µg

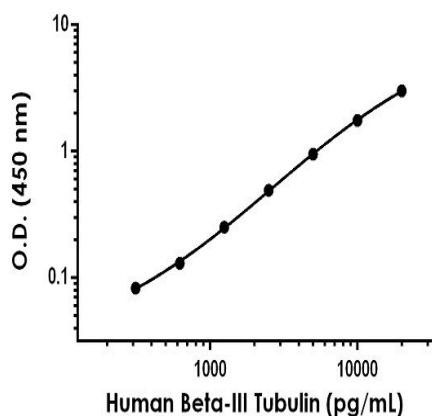
Function	Tubulin is the major constituent of microtubules. It binds two moles of GTP, one at an exchangeable site on the beta chain and one at a non-exchangeable site on the alpha-chain. TUBB3 plays a critical role in proper axon guidance and maintenance.
Tissue specificity	Expression is primarily restricted to central and peripheral nervous system.
Involvement in disease	Defects in TUBB3 are the cause of congenital fibrosis of extraocular muscles type 3A (CFEOM3A) [MIM:600638]. A congenital ocular motility disorder marked by restrictive ophthalmoplegia affecting extraocular muscles innervated by the oculomotor and/or trochlear nerves. It is clinically characterized by anchoring of the eyes in downward gaze, ptosis, and backward tilt of the head. Congenital fibrosis of extraocular muscles type 3 presents as a non-progressive, autosomal dominant disorder with variable expression. Patients may be bilaterally or unilaterally affected, and their oculo-motility defects range from complete ophthalmoplegia (with the eyes fixed in a hypo- and exotropic position), to mild asymptomatic restrictions of ocular movement. Ptosis, refractive error, amblyopia, and compensatory head positions are associated with the more severe forms of the disorder. In some cases the ocular phenotype is accompanied by additional features including developmental delay, corpus callosum agenesis, basal ganglia dysmorphism, facial weakness, polyneuropathy.
Sequence similarities	Belongs to the tubulin family.
Domain	The highly acidic C-terminal region may bind cations such as calcium.
Post-translational modifications	Some glutamate residues at the C-terminus are polyglutamylated. This modification occurs exclusively on glutamate residues and results in polyglutamate chains on the gamma-carboxyl group. Also monoglycylated but not polyglycylated due to the absence of functional TTLL10 in human. Monoglycylation is mainly limited to tubulin incorporated into axonemes (cilia and flagella) whereas glutamylation is prevalent in neuronal cells, centrioles, axonemes, and the mitotic spindle. Both modifications can coexist on the same protein on adjacent residues, and lowering glycylation levels increases polyglutamylated, and reciprocally. The precise function of such modifications is still unclear but they regulate the assembly and dynamics of axonemal microtubules.
Cellular localization	Cytoplasm > cytoskeleton.

Applications

The Abpromise guarantee Our **Abpromise guarantee** covers the use of ab244131 in the following tested applications. The application notes include recommended starting dilutions; optimal dilutions/concentrations should be determined by the end user.

Application	Abreviews	Notes
Sandwich ELISA		Use at an assay dependent concentration.

Images



Representative standard curve from corresponding SimpleStep ELISA® Kit ([ab235644](#)), which uses the same antibody pair. For additional information on the performance of pair and kit, refer to the corresponding kit datasheet. Due to differences in the formulation and format of the antibodies in this pair, they cannot be used as substitutes for the antibody components in our SimpleStep ELISA® Kits.

Sandwich ELISA - Human Beta-III Tubulin Antibody
Pair - BSA and Azide free (ab244131)

Powered by
recombinant antibodies



Research with confidence
Consistent and reproducible results



Long-term and scalable supply
Recombinant technology



Success from the first experiment
Confirmed specificity



Ethical standards compliant
Animal-free production

To learn more about the advantages of recombinant antibodies see [here](#).

Sandwich ELISA - Human Beta-III Tubulin Antibody
Pair - BSA and Azide free (ab244131)

Please note: All products are "FOR RESEARCH USE ONLY. NOT FOR USE IN DIAGNOSTIC PROCEDURES"

Our Abpromise to you: Quality guaranteed and expert technical support

- Replacement or refund for products not performing as stated on the datasheet
- Valid for 12 months from date of delivery
- Response to your inquiry within 24 hours
- We provide support in Chinese, English, French, German, Japanese and Spanish
- Extensive multi-media technical resources to help you
- We investigate all quality concerns to ensure our products perform to the highest standards

If the product does not perform as described on this datasheet, we will offer a refund or replacement. For full details of the Abpromise, please visit <https://www.abcam.com/abpromise> or contact our technical team.

Terms and conditions

- Guarantee only valid for products bought direct from Abcam or one of our authorized distributors