

Human RANTES Antibody Pair - BSA and Azide free (CCL5) ab243971

Recombinant RabMAb

2 Images

Overview

Product name	Human RANTES Antibody Pair - BSA and Azide free (CCL5)
Assay type	ELISA set
Range	3.125 pg/ml - 200 pg/ml
Species reactivity	Reacts with: Human
Product overview	<p>The Antibody Pair can be used to quantify Human RANTES. BSA and Azide free antibody pairs include unconjugated capture and detector antibodies suitable for sandwich ELISAs. The antibodies are provided at an approximate concentration of 1 mg/ml as measured by the protein A280 method. The recommended antibody orientation is based on internal optimization for ELISA-based assays. Antibody orientation is assay dependent and needs to be optimized for each assay type. Both capture and detector antibodies are rabbit monoclonal antibodies delivering consistent, specific, and sensitive results.</p> <p>For additional information on the performance of the antibody pair, see the equivalent SimpleStep ELISA® Kit (ab174446), which uses the same antibodies. However, due to differences in their formulation, this antibody pair cannot be used with the consumables provided with our SimpleStep ELISA Kits. Please note that the range provided for the pairs is only an estimation based on the performance of the related product using the same antibody pair. Performance of the antibody pair will depend on the specific characteristics of your assay. We guarantee the product works in sandwich ELISA, but we do not guarantee the sensitivity or dynamic range of the antibody pair in your assay.</p>
Tested applications	Suitable for: Sandwich ELISA
Platform	Reagents

Properties

Storage instructions	Store at +4°C. Please refer to protocols.
Carrier free	Yes

Components	10 x 96 tests
Human RANTES (CCL5) Capture Antibody (unconjugated)	1 x 100µg
Human RANTES (CCL5) Detector Antibody (unconjugated)	1 x 100µg

Function	Chemoattractant for blood monocytes, memory T-helper cells and eosinophils. Causes the release of histamine from basophils and activates eosinophils. Binds to CCR1, CCR3, CCR4 and CCR5. One of the major HIV-suppressive factors produced by CD8+ T-cells. Recombinant RANTES protein induces a dose-dependent inhibition of different strains of HIV-1, HIV-2, and simian immunodeficiency virus (SIV). The processed form RANTES(3-68) acts as a natural chemotaxis inhibitor and is a more potent inhibitor of HIV-1-infection. The second processed form RANTES(4-68) exhibits reduced chemotactic and HIV-suppressive activity compared with RANTES(1-68) and RANTES(3-68) and is generated by an unidentified enzyme associated with monocytes and neutrophils.
Tissue specificity	T-cell and macrophage specific.
Sequence similarities	Belongs to the intercrine beta (chemokine CC) family.
Post-translational modifications	N-terminal processed form RANTES(3-68) is produced by proteolytic cleavage, probably by DPP4, after secretion from peripheral blood leukocytes and cultured sarcoma cells. The identity of the O-linked saccharides at Ser-27 and Ser-28 are not reported in PubMed:1380064. They are assigned by similarity.
Cellular localization	Secreted.

Applications

The Abpromise guarantee Our **Abpromise guarantee** covers the use of ab243971 in the following tested applications. The application notes include recommended starting dilutions; optimal dilutions/concentrations should be determined by the end user.

Application	Abreviews	Notes
Sandwich ELISA		Use at an assay dependent concentration.

Images

Powered by
recombinant antibodies



Research with
confidence
Consistent and
reproducible results



Long-term and
scalable supply
Recombinant
technology



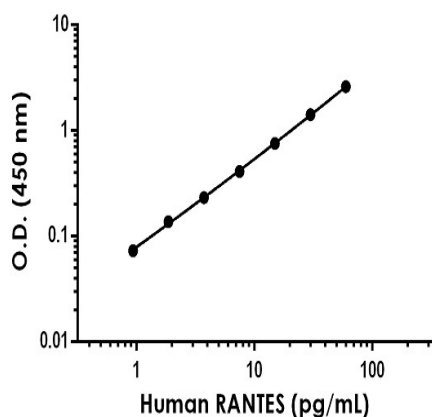
Success from the
first experiment
Confirmed
specificity



Ethical standards
compliant
Animal-free
production

Sandwich ELISA - Human RANTES Antibody Pair -
BSA and Azide free (CCL5) (ab243971)

To learn more about the advantages of recombinant antibodies see
[here](#).



Representative Human RANTES standard curve
using sandwich ELISA method

Representative standard curve from corresponding SimpleStep
ELISA® Kit ([ab174446](#)), which uses the same antibody pair. For
additional information on the performance of pair and kit, refer to
the corresponding kit datasheet. Due to differences in the
formulation and format of the antibodies in this pair, they cannot be
used as substitutes for the antibody components in our SimpleStep
ELISA® Kits.

Please note: All products are "FOR RESEARCH USE ONLY. NOT FOR USE IN DIAGNOSTIC PROCEDURES"

Our Abpromise to you: Quality guaranteed and expert technical support

- Replacement or refund for products not performing as stated on the datasheet
- Valid for 12 months from date of delivery
- Response to your inquiry within 24 hours
- We provide support in Chinese, English, French, German, Japanese and Spanish
- Extensive multi-media technical resources to help you
- We investigate all quality concerns to ensure our products perform to the highest standards

If the product does not perform as described on this datasheet, we will offer a refund or replacement. For full details of the Abpromise, please visit <https://www.abcam.com/abpromise> or contact our technical team.

Terms and conditions

- Guarantee only valid for products bought direct from Abcam or one of our authorized distributors