

Product datasheet

Human Syndecan-1 Antibody Pair - BSA and Azide free ab253855

Recombinant RabMAb

2 Images

Overview

Product name	Human Syndecan-1 Antibody Pair - BSA and Azide free
Assay type	ELISA set
Range	39.06 pg/ml - 5000 pg/ml
Species reactivity	Reacts with: Human
Product overview	Human Syndecan-1 is a matched pair of unconjugated recombinant rabbit monoclonal capture and detection antibodies used to quantify Human Syndecan-1 in sandwich ELISAs and many other pair-based applications.

Notes

Our RabMAb[®] technology is a patented hybridoma-based technology for making rabbit monoclonal antibodies. For details on our patents, please refer to [RabMAb[®] patents](#).

The pair can be used in variety of assays and platforms including but not limited to:

- Sandwich ELISA
- FRET/TR-FRET/HTRF
- Meso Scale Discovery[®] (MSD[®])
- Bead-based assays
- AlphaLISA[®]/AlphaScreen[®]
- DELFI[®] immunoassays
- Simoa[®] and Single Molecule Counting (SMC[™]) immunoassays
- Multiplex

Our antibody pairs are supplied in a **carrier-free format** that is conjugation-ready:
Buffer free of BSA, sodium azide, and glycerol for higher conjugation efficiency.
Concentration of ~1 mg/ml as measured by the protein A280 method.
Use our conjugation kits for antibody conjugates that are ready-to-use in as little as 20 minutes with <1 minute hands-on-time and 100% antibody recovery: available for fluorescent dyes, HRP, biotin and gold.

We can label antibodies for you: get in touch today to discuss how we can help accelerate your assay development with **custom conjugation services**.

Pairs are screened in biological samples, including plasma and serum, to ensure specificity in complex samples.

Please note:

The recommended antibody orientation is based on internal optimization in sandwich ELISA. Antibody orientation is assay dependent and needs to be optimized for each assay type.

The range provided for this antibody pair is based on initial sandwich ELISA validation data using recombinant protein. Performance and range of the antibody pair will depend on the specific characteristics of your assay, including standard protein selection.

We guarantee the product works in sandwich ELISA, but we do not guarantee the sensitivity or dynamic range of the antibodies in other assays.

Antibody properties:

Capture antibody: recombinant rabbit monoclonal (unconjugated) – 100 µg

Detector antibody: recombinant rabbit monoclonal (unconjugated) - 100 µg

Concentration: ~1 mg/ml

Storage buffer: 100% PBS

Form: Liquid

Isotype: IgG

Recombinant monoclonal antibodies offer several advantages including:

- High batch-to-batch consistency and reproducibility
- Improved sensitivity and specificity
- Long-term security of supply
- Animal-free production

For more information [see here](#).

Meso Scale Discovery and MSD are registered trademarks of Meso Scale Diagnostics, LLC.

AlphaLISA, AlphaScreen, and DELFIA are registered trademarks of PerkinElmer, Inc.

Simoa is a registered trademark of Quanterix, Inc.

SMC is a registered trademark of Merck KGaA, Darmstadt, Germany.

Tested applications

Suitable for: Sandwich ELISA

Platform

Reagents

Properties

Storage instructions

Store at +4°C. Please refer to protocols.

Carrier free

Yes

Components	10 x 96 tests
Human Syndecan-1 (CD138) (SDC1) Capture Antibody (unconjugated)	1 x 100µg
Human Syndecan-1 (CD138) (SDC1) Detector Antibody (unconjugated)	1 x 100µg

Function

Cell surface proteoglycan that bears both heparan sulfate and chondroitin sulfate and that links the cytoskeleton to the interstitial matrix.

Sequence similarities

Belongs to the syndecan proteoglycan family.

Cellular localization

Membrane.

Applications

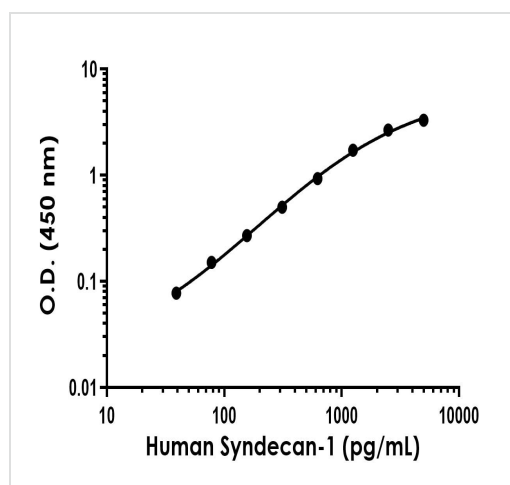
The Abpromise guarantee

Our **Abpromise guarantee** covers the use of ab253855 in the following tested applications.

The application notes include recommended starting dilutions; optimal dilutions/concentrations should be determined by the end user.

Application	Abreviews	Notes
Sandwich ELISA		Use at an assay dependent concentration.

Images



Sandwich ELISA of ab253855 with the capture antibody **ab285022** dilution at 2 µg/mL and detector antibody **ab285128** dilution at 0.5 µg/mL.

Sandwich ELISA - Human Syndecan-1 Antibody
Pair - BSA and Azide free (ab253855)

Powered by
recombinant antibodies

- Research with confidence**
Consistent and reproducible results
- Long-term and scalable supply**
Recombinant technology
- Success from the first experiment**
Confirmed specificity
- Ethical standards compliant**
Animal-free production

Sandwich ELISA - Antibody Pair - BSA and Azide
Free (ab253855)

To learn more about the advantages of recombinant antibodies see [here](#).

Please note: All products are "FOR RESEARCH USE ONLY. NOT FOR USE IN DIAGNOSTIC PROCEDURES"

Our Abpromise to you: Quality guaranteed and expert technical support

- Replacement or refund for products not performing as stated on the datasheet
- Valid for 12 months from date of delivery
- Response to your inquiry within 24 hours

- We provide support in Chinese, English, French, German, Japanese and Spanish
- Extensive multi-media technical resources to help you
- We investigate all quality concerns to ensure our products perform to the highest standards

If the product does not perform as described on this datasheet, we will offer a refund or replacement. For full details of the Abpromise, please visit <https://www.abcam.com/abpromise> or contact our technical team.

Terms and conditions

- Guarantee only valid for products bought direct from Abcam or one of our authorized distributors