

## Product datasheet

# Mouse ECM1 Antibody Pair - BSA and Azide free ab256712

Recombinant RabMAb

3 Images

### Overview

|                     |   |
|---------------------|---|
| Product name        | Mouse ECM1 Antibody Pair - BSA and Azide free   |
| Assay type          | ELISA set   |
| Range               | 125 pg/ml - 8000 pg/ml  |
| Species reactivity  | <b>Reacts with:</b> Mouse   |
| Product overview    | <p>The Antibody Pair can be used to quantify Mouse ECM1. BSA and Azide free antibody pairs include unconjugated capture and detector antibodies suitable for sandwich ELISAs. The antibodies are provided at an approximate concentration of 1 mg/ml as measured by the protein A280 method. The recommended antibody orientation is based on internal optimization for ELISA-based assays. Antibody orientation is assay dependent and needs to be optimized for each assay type. Both capture and detector antibodies are rabbit monoclonal antibodies delivering consistent, specific, and sensitive results.</p> <p>For additional information on the performance of the antibody pair, see the equivalent SimpleStep ELISA® Kit (<a href="#">ab252368</a>), which uses the same antibodies. However, due to differences in their formulation, this antibody pair cannot be used with the consumables provided with our SimpleStep ELISA Kits. Please note that the range provided for the pairs is only an estimation based on the performance of the related product using the same antibody pair. Performance of the antibody pair will depend on the specific characteristics of your assay. We guarantee the product works in sandwich ELISA, but we do not guarantee the sensitivity or dynamic range of the antibody pair in your assay.</p> <p>Download SDS <a href="#">here</a>.</p> |
| Tested applications | <b>Suitable for:</b> Sandwich ELISA   |
| Platform            | Reagents  |

### Properties

|                      |   |
|----------------------|---|
| Storage instructions | Store at +4°C. Please refer to protocols. |
| Carrier free         | Yes                                       |

| Components                                  | 10 x 96 tests |
|---|---------------|
| Mouse ECM1 Capture Antibody (unconjugated)  | 1 x 100µg     |
| Mouse ECM1 Detector Antibody (unconjugated) | 1 x 100µg     |

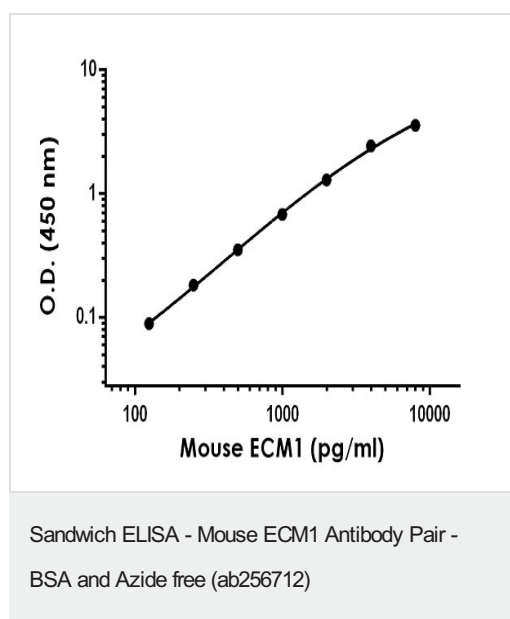
|                               |   |
|-------------------------------|---|
| <b>Function</b>               | Involved in endochondral bone formation as negative regulator of bone mineralization. Stimulates the proliferation of endothelial cells and promotes angiogenesis. Inhibits MMP9 proteolytic activity.  |
| <b>Tissue specificity</b>     | Expressed in breast cancer tissues. Little or no expression observed in normal breast tissues. Expressed in skin; wide expression is observed throughout the dermis with minimal expression in the epidermis.   |
| <b>Involvement in disease</b> | Defects in ECM1 are the cause of lipoid proteinosis (LiP) [MIM:247100]; also known as lipoid proteinosis of Urbach and Wiethe or hyalinosis cutis et mucosae. LiP is a rare autosomal recessive disorder characterized by generalized thickening of skin, mucosae and certain viscera. Classical features include beaded eyelid papules and laryngeal infiltration leading to hoarseness. Histologically, there is widespread deposition of hyaline material and disruption/reduplication of basement membrane. |
| <b>Cellular localization</b>  | Secreted > extracellular space > extracellular matrix.  |

## Applications

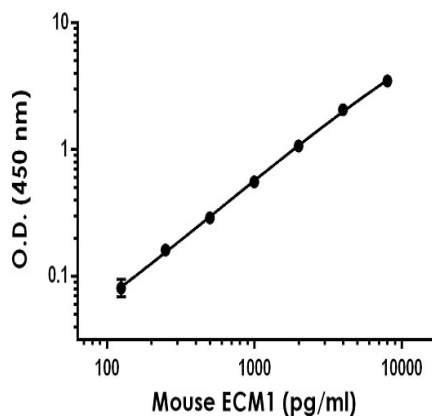
**The Abpromise guarantee** Our **Abpromise guarantee** covers the use of ab256712 in the following tested applications. The application notes include recommended starting dilutions; optimal dilutions/concentrations should be determined by the end user.

| Application           | Abreviews | Notes                                    |
|-----------------------|-----------|--|
| <b>Sandwich ELISA</b> |           | Use at an assay dependent concentration. |

## Images



Representative standard curve from corresponding SimpleStep ELISA® Kit (**ab252368**), which uses the same antibody pair. For additional information on the performance of pair and kit, refer to the corresponding kit datasheet. Due to differences in the formulation and format of the antibodies in this pair, they cannot be used as substitutes for the antibody components in our SimpleStep ELISA® Kits.



Sandwich ELISA - Mouse ECM1 Antibody Pair -  
BSA and Azide free (ab256712)

Representative standard curve from corresponding SimpleStep ELISA® Kit ([ab252368](#)), which uses the same antibody pair. For additional information on the performance of pair and kit, refer to the corresponding kit datasheet. Due to differences in the formulation and format of the antibodies in this pair, they cannot be used as substitutes for the antibody components in our SimpleStep ELISA® Kits.

Powered by  
recombinant antibodies



Research with  
confidence  
Consistent and  
reproducible results



Long-term and  
scalable supply  
Recombinant  
technology



Success from the  
first experiment  
Confirmed  
specificity



Ethical standards  
compliant  
Animal-free  
production

Sandwich ELISA - Mouse ECM1 Antibody Pair -  
BSA and Azide free (ab256712)

To learn more about the advantages of recombinant antibodies see [here](#).

**Please note:** All products are "FOR RESEARCH USE ONLY. NOT FOR USE IN DIAGNOSTIC PROCEDURES"

### Our Abpromise to you: Quality guaranteed and expert technical support

- Replacement or refund for products not performing as stated on the datasheet
- Valid for 12 months from date of delivery
- Response to your inquiry within 24 hours
- We provide support in Chinese, English, French, German, Japanese and Spanish
- Extensive multi-media technical resources to help you
- We investigate all quality concerns to ensure our products perform to the highest standards

If the product does not perform as described on this datasheet, we will offer a refund or replacement. For full details of the Abpromise, please visit <https://www.abcam.com/abpromise> or contact our technical team.

## Terms and conditions

---

- Guarantee only valid for products bought direct from Abcam or one of our authorized distributors