

Product datasheet

Mouse MCP2 Antibody Pair - BSA and Azide free ab241739

Recombinant RabMAb

[3 Images](#)

Overview

Product name Mouse MCP2 Antibody Pair - BSA and Azide free

Assay type ELISA set

Range 3.9 pg/ml - 250 pg/ml

Species reactivity **Reacts with:** Mouse

Product overview

The Antibody Pair can be used to quantify Mouse MCP2 (CCL8). BSA and Azide free antibody pairs include unconjugated capture and detector antibodies suitable for sandwich ELISAs. The antibodies are provided at an approximate concentration of 1 mg/ml as measured by the protein A280 method. The recommended antibody orientation is based on internal optimization for ELISA-based assays. Antibody orientation is assay dependent and needs to be optimized for each assay type. Both capture and detector antibodies are rabbit monoclonal antibodies delivering consistent, specific, and sensitive results.

For additional information on the performance of the antibody pair, see the equivalent SimpleStep ELISA® Kit ([ab203366](#)), which uses the same antibodies. However, due to differences in their formulation, this antibody pair cannot be used with the consumables provided with our SimpleStep ELISA Kits. Please note that the range provided for the pairs is only an estimation based on the performance of the related product using the same antibody pair. Performance of the antibody pair will depend on the specific characteristics of your assay. We guarantee the product works in sandwich ELISA, but we do not guarantee the sensitivity or dynamic range of the antibody pair in your assay.

Tested applications **Suitable for:** Sandwich ELISA

Platform Reagents

Properties

Storage instructions Store at +4°C. Please refer to protocols.

Carrier free Yes

| Components | 10 x 96 tests |
|---|---------------|
| Mouse MCP2 Capture Antibody (unconjugated) | 1 x 100µg |
| Mouse MCP2 Detector Antibody (unconjugated) | 1 x 100µg |

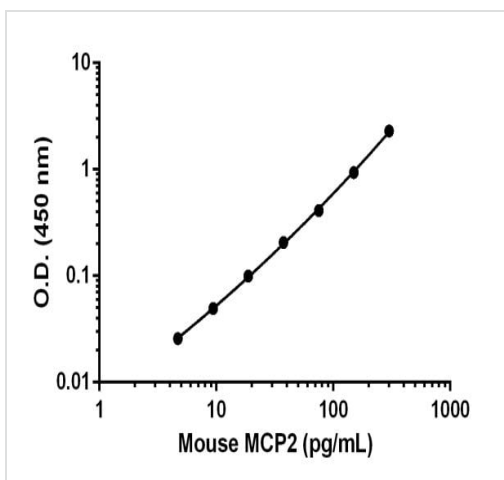
| | |
|---|--|
| Function | Chemotactic factor that attracts monocytes, lymphocytes, basophils and eosinophils. May play a role in neoplasia and inflammatory host responses. This protein can bind heparin. The processed form MCP-2(6-76) does not show monocyte chemotactic activity, but inhibits the chemotactic effect most predominantly of CCL7, and also of CCL2 and CCL5 and CCL8. |
| Tissue specificity | Highest expression found in the small intestine and peripheral blood cells. Intermediate levels seen in the heart, placenta, lung, skeletal muscle, thymus, colon, ovary, spinal cord and pancreas. Low levels seen in the brain, liver, spleen and prostate. |
| Sequence similarities | Belongs to the intercrine beta (chemokine CC) family. |
| Post-translational modifications | N-terminal processed form MCP-2(6-76) is produced by proteolytic cleavage after secretion from peripheral blood monocytes. |
| Cellular localization | Secreted. |

Applications

The Abpromise guarantee Our **Abpromise guarantee** covers the use of ab241739 in the following tested applications. The application notes include recommended starting dilutions; optimal dilutions/concentrations should be determined by the end user.

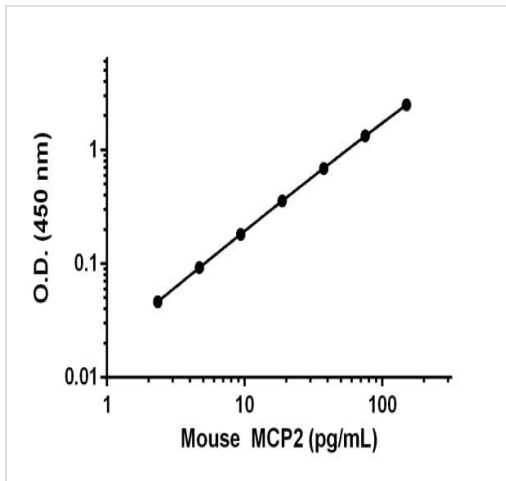
| Application | Abreviews | Notes |
|-----------------------|-----------|--|
| Sandwich ELISA | | Use at an assay dependent concentration. |

Images



Representative standard curve from corresponding SimpleStep ELISA® Kit ([ab203366](#)), which uses the same antibody pair. For additional information on the performance of pair and kit, refer to the corresponding kit datasheet. Due to differences in the formulation and format of the antibodies in this pair, they cannot be used as substitutes for the antibody components in our SimpleStep ELISA® Kits.





Sandwich ELISA - Mouse MCP2 Antibody Pair - BSA and Azide free (ab241739)



Sandwich ELISA - Mouse MCP2 Antibody Pair -
BSA and Azide free (ab241739)

Representative standard curve from corresponding SimpleStep ELISA® Kit ([ab203366](#)), which uses the same antibody pair. For additional information on the performance of pair and kit, refer to the corresponding kit datasheet. Due to differences in the formulation and format of the antibodies in this pair, they cannot be used as substitutes for the antibody components in our SimpleStep ELISA® Kits.

Powered by
recombinant antibodies

| | |
|--|--|
|  <p>Research with confidence Consistent and reproducible results</p> |  <p>Long-term and scalable supply Recombinant technology</p> |
|  <p>Success from the first experiment Confirmed specificity</p> |  <p>Ethical standards compliant Animal-free production</p> |

Sandwich ELISA - Mouse MCP2 Antibody Pair -
BSA and Azide free (ab241739)

To learn more about the advantages of recombinant antibodies see [here](#).

Please note: All products are "FOR RESEARCH USE ONLY. NOT FOR USE IN DIAGNOSTIC PROCEDURES"

Our Abpromise to you: Quality guaranteed and expert technical support

- Replacement or refund for products not performing as stated on the datasheet
- Valid for 12 months from date of delivery
- Response to your inquiry within 24 hours
- We provide support in Chinese, English, French, German, Japanese and Spanish
- Extensive multi-media technical resources to help you
- We investigate all quality concerns to ensure our products perform to the highest standards

If the product does not perform as described on this datasheet, we will offer a refund or replacement. For full details of the Abpromise, please visit <https://www.abcam.com/abpromise> or contact our technical team.

Terms and conditions

- Guarantee only valid for products bought direct from Abcam or one of our authorized distributors