

Mouse MIP1b Matched Antibody Pair Kit ab215398

1 Image

Overview

Product name	Mouse MIP1b Matched Antibody Pair Kit
Detection method	Colorimetric
Assay type	ELISA set
Sensitivity	0.67 pg/ml
Range	1.95 pg/ml - 125 pg/ml
Species reactivity	Reacts with: Mouse
Product overview	Mouse MIP1b Matched Antibody Pair Kits include a capture and a biotinylated detector antibody pair, along with a calibrated protein standard, suitable for sandwich ELISA. The Matched Antibody Pair Kit can be used to quantify native and recombinant mouse MIP1b.

Optimization of the kit reagents to sample type, immunoassay format or instrumentation may be required. Guidelines for use of this kit in a standard 96-well microplate sandwich ELISA using HRP/TMB system of colorimetric detection is described in this assay procedure for the purposes of quantification.

Protocol information and tips on the use of the Matched Antibody Pair kits for sandwich ELISA can be found on our [website](#). An accessory pack can be purchased which includes buffer reagents required to perform 10 x 96-well plate sandwich ELISAs ([ab210905](#)).

For additional information on the performance of the antibody pair used in this kit, please see our equivalent SimpleStep ELISA kit [ab215115](#). Please note that while the antibody pair is the same provided in the corresponding SimpleStep ELISA Kit, due to differences in their formulation, this antibody pair cannot be used with the consumables provided with our SimpleStep ELISA Kits.

Tested applications	Suitable for: ELISA, IA
Platform	Reagents

Properties

Storage instructions	Store at -20°C. Please refer to protocols.
-----------------------------	--

Components	5 x 96 tests
Mouse MIP1b Capture Antibody	1 x 50µg
Mouse MIP1b Detector Antibody	1 x 12.5µg
Mouse MIP1b Lyophilized Protein	1 vial

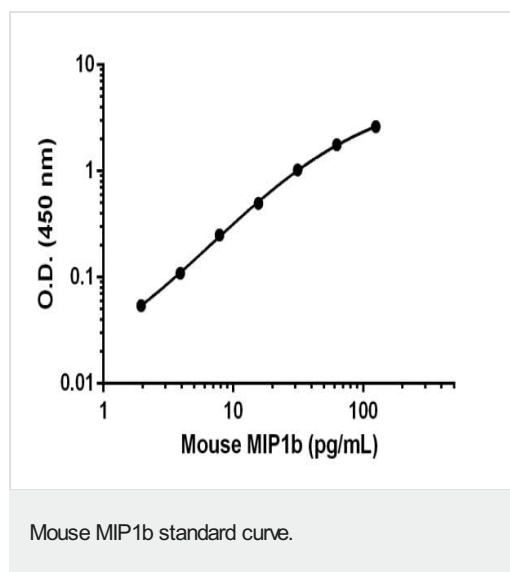
Function	Monokine with inflammatory and chemokinetic properties. Binds to CCR5. One of the major HIV-suppressive factors produced by CD8+ T-cells. Recombinant MIP-1-beta induces a dose-dependent inhibition of different strains of HIV-1, HIV-2, and simian immunodeficiency virus (SIV). The processed form MIP-1-beta(3-69) retains the abilities to induce down-modulation of surface expression of the chemokine receptor CCR5 and to inhibit the CCR5-mediated entry of HIV-1 in T-cells. MIP-1-beta(3-69) is also a ligand for CCR1 and CCR2 isoform B.
Sequence similarities	Belongs to the intercrine beta (chemokine CC) family.
Post-translational modifications	N-terminal processed form MIP-1-beta(3-69) is produced by proteolytic cleavage after secretion from peripheral blood lymphocytes.
Cellular localization	Secreted.

Applications

The Abpromise guarantee Our **Abpromise guarantee** covers the use of ab215398 in the following tested applications. The application notes include recommended starting dilutions; optimal dilutions/concentrations should be determined by the end user.

Application	Abreviews	Notes
ELISA		Use at an assay dependent concentration.
IA		Use at an assay dependent concentration.

Images



Standard calibration curve. Background subtracted values are graphed.

Please note: All products are "FOR RESEARCH USE ONLY. NOT FOR USE IN DIAGNOSTIC PROCEDURES"

Our Abpromise to you: Quality guaranteed and expert technical support

- Replacement or refund for products not performing as stated on the datasheet
- Valid for 12 months from date of delivery
- Response to your inquiry within 24 hours

- We provide support in Chinese, English, French, German, Japanese and Spanish
- Extensive multi-media technical resources to help you
- We investigate all quality concerns to ensure our products perform to the highest standards

If the product does not perform as described on this datasheet, we will offer a refund or replacement. For full details of the Abpromise, please visit <https://www.abcam.com/abpromise> or contact our technical team.

Terms and conditions

- Guarantee only valid for products bought direct from Abcam or one of our authorized distributors