

Product datasheet

Mouse Uromodulin Antibody Pair - BSA and Azide free ab256667

Recombinant RabMAb

[3 Images](#)

Overview

Product name	Mouse Uromodulin Antibody Pair - BSA and Azide free
Assay type	ELISA set
Range	625 pg/ml - 40000 pg/ml
Species reactivity	Reacts with: Mouse
Product overview	<p>The Antibody Pair can be used to quantify Mouse Uromodulin. BSA and Azide free antibody pairs include unconjugated capture and detector antibodies suitable for sandwich ELISAs. The antibodies are provided at an approximate concentration of 1 mg/ml as measured by the protein A280 method. The recommended antibody orientation is based on internal optimization for ELISA-based assays. Antibody orientation is assay dependent and needs to be optimized for each assay type. Both capture and detector antibodies are rabbit monoclonal antibodies delivering consistent, specific, and sensitive results.</p> <p>For additional information on the performance of the antibody pair, see the equivalent SimpleStep ELISA® Kit (ab245726), which uses the same antibodies. However, due to differences in their formulation, this antibody pair cannot be used with the consumables provided with our SimpleStep ELISA Kits. Please note that the range provided for the pairs is only an estimation based on the performance of the related product using the same antibody pair. Performance of the antibody pair will depend on the specific characteristics of your assay. We guarantee the product works in sandwich ELISA, but we do not guarantee the sensitivity or dynamic range of the antibody pair in your assay.</p> <p>Download SDS here.</p>
Tested applications	Suitable for: Sandwich ELISA
Platform	Reagents

Properties

Storage instructions	Store at +4°C. Please refer to protocols.
Carrier free	Yes

Components	10 x 96 tests
Mouse Uromodulin Capture Antibody (unconjugated)	1 x 100µg
Mouse Uromodulin Detector Antibody (unconjugated)	1 x 100µg

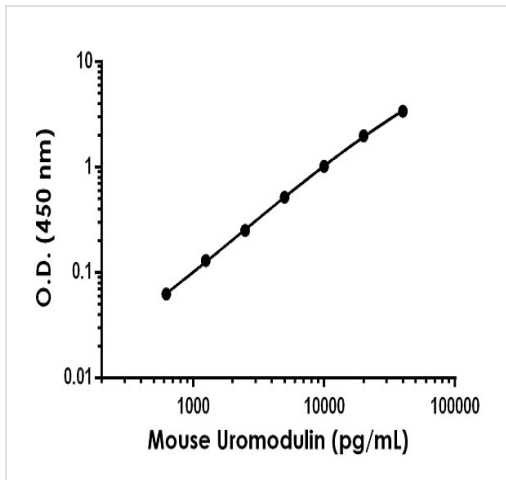
Function	Not known. May play a role in regulating the circulating activity of cytokines as it binds to IL-1, IL-2 and TNF with high affinity.
Tissue specificity	Synthesized by kidney. Most abundant protein in normal human urine.
Involvement in disease	<p>Defects in UMOD are the cause of familial juvenile hyperuricemic nephropathy type 1 (HNFJ1) [MIM:162000]. HNFJ1 is a renal disease characterized by juvenile onset of hyperuricemia, polyuria, progressive renal failure, and gout. The disease is associated with interstitial pathological changes resulting in fibrosis.</p> <p>Defects in UMOD are the cause of medullary cystic kidney disease type 2 (MCKD2) [MIM:603860]. MCKD2 is a form of tubulointerstitial nephropathy characterized by formation of renal cysts at the corticomedullary junction. It is characterized by adult onset of impaired renal function and salt wasting resulting in end-stage renal failure by the sixth decade.</p> <p>Defects in UMOD are the cause of glomerulocystic kidney disease with hyperuricemia and isosthenuria (GCKDHI) [MIM:609886]. GCKDHI is a renal disorder characterized by a cystic dilation of Bowman space, a collapse of glomerular tuft, and hyperuricemia due to low fractional excretion of uric acid and severe impairment of urine concentrating ability.</p>
Sequence similarities	<p>Contains 3 EGF-like domains.</p> <p>Contains 1 ZP domain.</p>
Cellular localization	Cell membrane. Secreted. Secreted after cleavage in the urine.

Applications

The Abpromise guarantee Our **Abpromise guarantee** covers the use of ab256667 in the following tested applications. The application notes include recommended starting dilutions; optimal dilutions/concentrations should be determined by the end user.

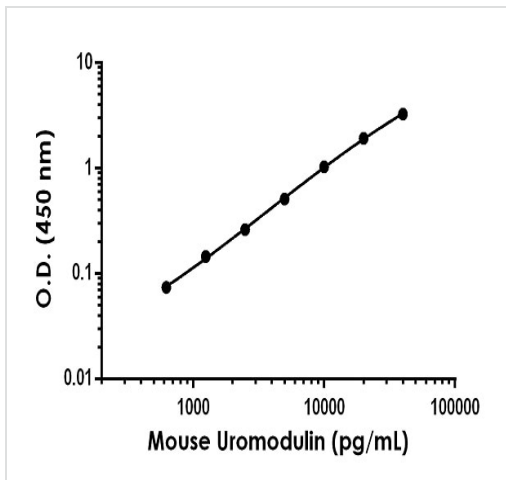
Application	Abreviews	Notes
Sandwich ELISA		Use at an assay dependent concentration.

Images



Sandwich ELISA - Mouse Uromodulin Antibody Pair
- BSA and Azide free (ab256667)

Representative standard curve from corresponding SimpleStep ELISA® Kit ([ab245726](#)), which uses the same antibody pair. For additional information on the performance of pair and kit, refer to the corresponding kit datasheet. Due to differences in the formulation and format of the antibodies in this pair, they cannot be used as substitutes for the antibody components in our SimpleStep ELISA® Kits.



Sandwich ELISA - Mouse Uromodulin Antibody Pair
- BSA and Azide free (ab256667)

Representative standard curve from corresponding SimpleStep ELISA® Kit ([ab245726](#)), which uses the same antibody pair. For additional information on the performance of pair and kit, refer to the corresponding kit datasheet. Due to differences in the formulation and format of the antibodies in this pair, they cannot be used as substitutes for the antibody components in our SimpleStep ELISA® Kits.

Powered by
recombinant antibodies



Research with confidence
Consistent and reproducible results



Long-term and scalable supply
Recombinant technology



Success from the first experiment
Confirmed specificity



Ethical standards compliant
Animal-free production

Sandwich ELISA - Mouse Uromodulin Antibody Pair
- BSA and Azide free (ab256667)

To learn more about the advantages of recombinant antibodies see [here](#).

Please note: All products are "FOR RESEARCH USE ONLY. NOT FOR USE IN DIAGNOSTIC PROCEDURES"

Our Abpromise to you: Quality guaranteed and expert technical support

- Replacement or refund for products not performing as stated on the datasheet
- Valid for 12 months from date of delivery
- Response to your inquiry within 24 hours
- We provide support in Chinese, English, French, German, Japanese and Spanish
- Extensive multi-media technical resources to help you
- We investigate all quality concerns to ensure our products perform to the highest standards

If the product does not perform as described on this datasheet, we will offer a refund or replacement. For full details of the Abpromise, please visit <https://www.abcam.com/abpromise> or contact our technical team.

Terms and conditions

- Guarantee only valid for products bought direct from Abcam or one of our authorized distributors