

## Product datasheet

# Mouse Von Willebrand Factor 2 Antibody Pair - BSA and Azide free ab241793

Recombinant RabMAb

[2 Images](#)

### Overview

---

<b>Product name</b>	Mouse Von Willebrand Factor 2 Antibody Pair - BSA and Azide free
<b>Assay type</b>	ELISA set
<b>Range</b>	62.5 pg/ml - 4000 pg/ml
<b>Species reactivity</b>	<b>Reacts with:</b> Mouse
<b>Product overview</b>	<p>The Antibody Pair can be used to quantify Mouse von Willebrand Factor A2. BSA and Azide free antibody pairs include unconjugated capture and detector antibodies suitable for sandwich ELISAs. The antibodies are provided at an approximate concentration of 1 mg/ml as measured by the protein A280 method. The recommended antibody orientation is based on internal optimization for ELISA-based assays. Antibody orientation is assay dependent and needs to be optimized for each assay type. Both capture and detector antibodies are rabbit monoclonal antibodies delivering consistent, specific, and sensitive results.</p> <p>For additional information on the performance of the antibody pair, see the equivalent SimpleStep ELISA® Kit (<a href="#">ab208980</a>), which uses the same antibodies. However, due to differences in their formulation, this antibody pair cannot be used with the consumables provided with our SimpleStep ELISA Kits. Please note that the range provided for the pairs is only an estimation based on the performance of the related product using the same antibody pair. Performance of the antibody pair will depend on the specific characteristics of your assay. We guarantee the product works in sandwich ELISA, but we do not guarantee the sensitivity or dynamic range of the antibody pair in your assay.</p>
<b>Tested applications</b>	<b>Suitable for:</b> Sandwich ELISA
<b>Platform</b>	Reagents

### Properties

---

<b>Storage instructions</b>	Store at +4°C. Please refer to protocols.
<b>Carrier free</b>	Yes

Components	10 x 96 tests
Mouse Von Willebrand Factor 2 Capture Antibody (unconjugated)	1 x 100µg
Mouse Von Willebrand Factor 2 Detector Antibody (unconjugated)	1 x 100µg

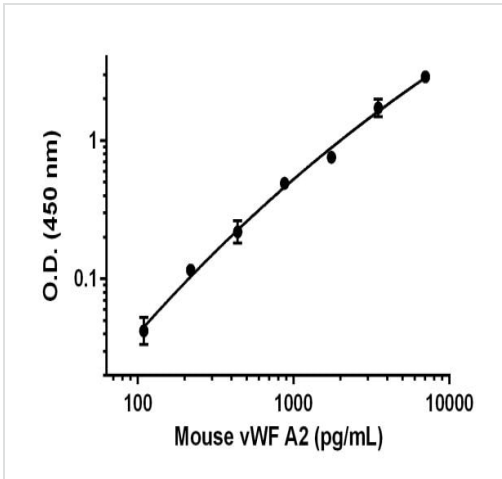
<b>Function</b>	Important in the maintenance of hemostasis, it promotes adhesion of platelets to the sites of vascular injury by forming a molecular bridge between sub-endothelial collagen matrix and platelet-surface receptor complex GPIb-IX-V. Also acts as a chaperone for coagulation factor VIII, delivering it to the site of injury, stabilizing its heterodimeric structure and protecting it from premature clearance from plasma.
<b>Tissue specificity</b>	Plasma.
<b>Involvement in disease</b>	Defects in VWF are the cause of von Willebrand disease (VWD) [MIM:277480]. VWD defines a group of hemorrhagic disorders in which the von Willebrand factor is either quantitatively or qualitatively abnormal resulting in altered platelet function. Symptoms vary depending on severity and disease type but may include prolonged bleeding time, deficiency of factor VIII and impaired platelet adhesion. Type I von Willebrand disease is the most common form and is characterized by partial quantitative plasmatic deficiency of an otherwise structurally and functionally normal Willebrand factor; type II is associated with a qualitative deficiency and functional anomalies of the Willebrand factor; type III is the most severe form and is characterized by total or near-total absence of Willebrand factor in the plasma and cellular compartments, also leading to a profound deficiency of plasmatic factor VIII.
<b>Sequence similarities</b>	Contains 1 CTCK (C-terminal cystine knot-like) domain. Contains 4 TIL (trypsin inhibitory-like) domains. Contains 3 VWFA domains. Contains 3 VWFC domains. Contains 4 VWFD domains.
<b>Domain</b>	The von Willebrand antigen 2 is required for multimerization of VWF and for its targeting to storage granules.
<b>Post-translational modifications</b>	All cysteine residues are involved in intrachain or interchain disulfide bonds. N- and O-glycosylated.
<b>Cellular localization</b>	Secreted. Secreted > extracellular space > extracellular matrix. Localized to storage granules.

## Applications

**The Abpromise guarantee** Our **Abpromise guarantee** covers the use of ab241793 in the following tested applications. The application notes include recommended starting dilutions; optimal dilutions/concentrations should be determined by the end user.

Application	Abreviews	Notes
Sandwich ELISA		Use at an assay dependent concentration.





## Images



Representative standard curve from corresponding SimpleStep ELISA® Kit ([ab208980](#)), which uses the same antibody pair. For additional information on the performance of pair and kit, refer to the corresponding kit datasheet. Due to differences in the formulation and format of the antibodies in this pair, they cannot be used as substitutes for the antibody components in our SimpleStep ELISA® Kits.

Sandwich ELISA - Mouse Von Willebrand Factor 2  
Antibody Pair - BSA and Azide free (ab241793)

Powered by recombinant antibodies

 <p><b>Research with confidence</b> Consistent and reproducible results</p>	 <p><b>Long-term and scalable supply</b> Recombinant technology</p>
 <p><b>Success from the first experiment</b> Confirmed specificity</p>	 <p><b>Ethical standards compliant</b> Animal-free production</p>

To learn more about the advantages of recombinant antibodies see [here](#).

Sandwich ELISA - Mouse Von Willebrand Factor 2  
Antibody Pair - BSA and Azide free (ab241793)

**Please note:** All products are "FOR RESEARCH USE ONLY. NOT FOR USE IN DIAGNOSTIC PROCEDURES"

### Our Abpromise to you: Quality guaranteed and expert technical support

- Replacement or refund for products not performing as stated on the datasheet
- Valid for 12 months from date of delivery
- Response to your inquiry within 24 hours
- We provide support in Chinese, English, French, German, Japanese and Spanish
- Extensive multi-media technical resources to help you
- We investigate all quality concerns to ensure our products perform to the highest standards

If the product does not perform as described on this datasheet, we will offer a refund or replacement. For full details of the Abpromise,

please visit <https://www.abcam.com/abpromise> or contact our technical team.

## **Terms and conditions**

---

- Guarantee only valid for products bought direct from Abcam or one of our authorized distributors