

# Mouse/Rat beta-2-Microglobulin Antibody Pair - BSA and Azide free ab244011

Recombinant RabMAb

2 Images

### Overview

Product name	Mouse/Rat beta-2-Microglobulin Antibody Pair - BSA and Azide free
Assay type	ELISA set
Range	3.125 pg/ml - 200 pg/ml
Species reactivity	<b>Reacts with:</b> Mouse, Rat
Product overview	<p>The Antibody Pair can be used to quantify Mouse/Rat Beta-2-Microglobulin. BSA and Azide free antibody pairs include unconjugated capture and detector antibodies suitable for sandwich ELISAs. The antibodies are provided at an approximate concentration of 1 mg/ml as measured by the protein A280 method. The recommended antibody orientation is based on internal optimization for ELISA-based assays. Antibody orientation is assay dependent and needs to be optimized for each assay type. Both capture and detector antibodies are rabbit monoclonal antibodies delivering consistent, specific, and sensitive results.</p> <p>For additional information on the performance of the antibody pair, see the equivalent SimpleStep ELISA® Kit (<a href="#">ab223590</a>), which uses the same antibodies. However, due to differences in their formulation, this antibody pair cannot be used with the consumables provided with our SimpleStep ELISA Kits. Please note that the range provided for the pairs is only an estimation based on the performance of the related product using the same antibody pair. Performance of the antibody pair will depend on the specific characteristics of your assay. We guarantee the product works in sandwich ELISA, but we do not guarantee the sensitivity or dynamic range of the antibody pair in your assay.</p>
Tested applications	<b>Suitable for:</b> Sandwich ELISA
Platform	Reagents

### Properties

Storage instructions	Store at +4°C. Please refer to protocols.
Carrier free	Yes

Components	10 x 96 tests
Mouse/Rat Beta-2-Microglobulin Capture Antibody (unconjugated)	1 x 100µg
Mouse/Rat Beta-2-Microglobulin Detector Antibody (unconjugated)	1 x 100µg

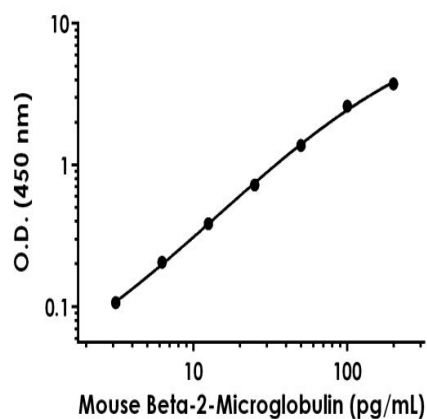
<b>Function</b>	Component of the class I major histocompatibility complex (MHC). Involved in the presentation of peptide antigens to the immune system.
<b>Involvement in disease</b>	Defects in B2M are the cause of hypercatabolic hypoproteinemia (HYCATHYP) [MIM:241600]. Affected individuals show marked reduction in serum concentrations of immunoglobulin and albumin, probably due to rapid degradation. Note=Beta-2-microglobulin may adopt the fibrillar configuration of amyloid in certain pathologic states. The capacity to assemble into amyloid fibrils is concentration dependent. Persistently high beta(2)-microglobulin serum levels lead to amyloidosis in patients on long-term hemodialysis.
<b>Sequence similarities</b>	Belongs to the beta-2-microglobulin family. Contains 1 Ig-like C1-type (immunoglobulin-like) domain.
<b>Post-translational modifications</b>	Glycation of Ile-21 is observed in long-term hemodialysis patients.
<b>Cellular localization</b>	Secreted. Detected in serum and urine.

## Applications

**The Abpromise guarantee** Our **Abpromise guarantee** covers the use of ab244011 in the following tested applications.  
The application notes include recommended starting dilutions; optimal dilutions/concentrations should be determined by the end user.

Application	Abreviews	Notes
<b>Sandwich ELISA</b>		Use at an assay dependent concentration.

## Images



Sandwich ELISA - Mouse/Rat Beta-2-Microglobulin  
Antibody Pair - BSA and Azide free (ab244011)

Representative standard curve from corresponding SimpleStep ELISA® Kit ([ab223590](#)), which uses the same antibody pair. For additional information on the performance of pair and kit, refer to the corresponding kit datasheet. Due to differences in the formulation and format of the antibodies in this pair, they cannot be used as substitutes for the antibody components in our SimpleStep ELISA® Kits.

Powered by  
recombinant antibodies



**Research with confidence**  
Consistent and reproducible results



**Long-term and scalable supply**  
Recombinant technology



**Success from the first experiment**  
Confirmed specificity



**Ethical standards compliant**  
Animal-free production

Sandwich ELISA - Mouse/Rat Beta-2-Microglobulin  
Antibody Pair - BSA and Azide free (ab244011)

To learn more about the advantages of recombinant antibodies see [here](#).

**Please note:** All products are "FOR RESEARCH USE ONLY. NOT FOR USE IN DIAGNOSTIC PROCEDURES"

### Our Abpromise to you: Quality guaranteed and expert technical support

- Replacement or refund for products not performing as stated on the datasheet
- Valid for 12 months from date of delivery
- Response to your inquiry within 24 hours
- We provide support in Chinese, English, French, German, Japanese and Spanish
- Extensive multi-media technical resources to help you
- We investigate all quality concerns to ensure our products perform to the highest standards

If the product does not perform as described on this datasheet, we will offer a refund or replacement. For full details of the Abpromise, please visit <https://www.abcam.com/abpromise> or contact our technical team.

## Terms and conditions

---

- Guarantee only valid for products bought direct from Abcam or one of our authorized distributors