

## Product datasheet

# Mouse/Rat CTGF Antibody Pair - BSA and Azide free ab253451

Recombinant RabMAb

[3 Images](#)

### Overview

---

<b>Product name</b>	Mouse/Rat CTGF Antibody Pair - BSA and Azide free
<b>Assay type</b>	ELISA set
<b>Range</b>	0.156 ng/ml - 10 ng/ml
<b>Species reactivity</b>	<b>Reacts with:</b> Mouse, Rat
<b>Product overview</b>	Both capture and detector antibodies are <b>recombinant rabbit monoclonal antibodies</b> delivering consistent, specific, and sensitive results.

The Antibody Pair can be used to quantify Mouse/Rat CTGF. BSA and Azide free antibody pairs include **unconjugated** capture and detector antibodies suitable for sandwich ELISAs. The antibodies are provided at an approximate concentration of 1 mg/ml as measured by the protein A280 method. The recommended antibody orientation is based on internal optimization for ELISA-based assays. Antibody orientation is assay dependent and needs to be optimized for each assay type.

For additional information on the performance of the antibody pair, see the equivalent SimpleStep ELISA® Kit ([ab275897](#)), which uses the same antibodies. However, due to differences in their formulation, this antibody pair cannot be used with the consumables provided with our SimpleStep ELISA Kits. Please note that the range provided for the pairs is only an estimation based on the performance of the related product using the same antibody pair. Performance of the antibody pair will depend on the specific characteristics of your assay. We guarantee the product works in sandwich ELISA, but we do not guarantee the sensitivity or dynamic range of the antibody pair in your assay.

Download SDS [here](#).

<b>Tested applications</b>	<b>Suitable for:</b> Sandwich ELISA
<b>Platform</b>	Reagents

### Properties

---

**Storage instructions** Store at +4°C. Please refer to protocols.

**Carrier free** Yes

Components	10 x 96 tests
Rat CTGF Capture Antibody (unconjugated)	1 x 100µg
Rat CTGF Detector Antibody (unconjugated)	1 x 100µg

**Function** Major connective tissue mitogen secreted by vascular endothelial cells. Promotes proliferation and differentiation of chondrocytes. Mediates heparin- and divalent cation-dependent cell adhesion in many cell types including fibroblasts, myofibroblasts, endothelial and epithelial cells. Enhances fibroblast growth factor-induced DNA synthesis.

**Tissue specificity** Expressed in bone marrow and thymic cells. Also expressed in one of two Wilms tumors tested.

**Sequence similarities** Belongs to the CCN family.  
Contains 1 CTCK (C-terminal cystine knot-like) domain.  
Contains 1 IGFBP N-terminal domain.  
Contains 1 TSP type-1 domain.  
Contains 1 VWFC domain.

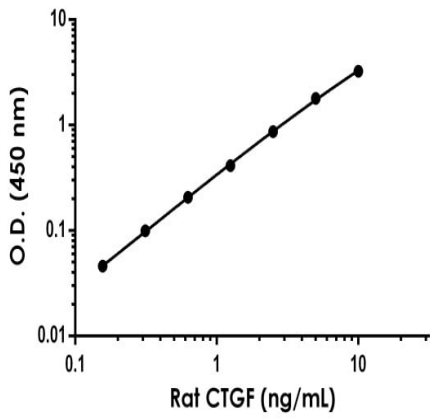
**Cellular localization** Secreted > extracellular space > extracellular matrix. Secreted.

## Applications

**The Abpromise guarantee** Our **Abpromise guarantee** covers the use of ab253451 in the following tested applications. The application notes include recommended starting dilutions; optimal dilutions/concentrations should be determined by the end user.

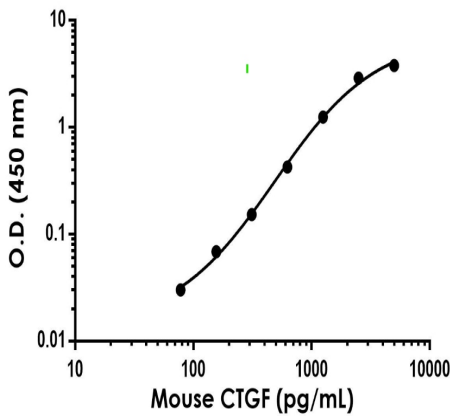
Application	Abreviews	Notes
<b>Sandwich ELISA</b>		Use at an assay dependent concentration.

## Images





Sandwich ELISA - Mouse/Rat CTGF Antibody Pair - BSA and Azide free (ab253451)

Representative standard curve from corresponding SimpleStep ELISA® Kit ([ab275897](#)), which uses the same antibody pair. For additional information on the performance of pair and kit, refer to the corresponding kit datasheet. Due to differences in the formulation and format of the antibodies in this pair, they cannot be used as substitutes for the antibody components in our SimpleStep ELISA® Kits.



Sandwich ELISA - Mouse/Rat CTGF Antibody Pair - BSA and Azide free (ab253451)

Powered by recombinant antibodies

 <p><b>Research with confidence</b> Consistent and reproducible results</p>	 <p><b>Long-term and scalable supply</b> Recombinant technology</p>
 <p><b>Success from the first experiment</b> Confirmed specificity</p>	 <p><b>Ethical standards compliant</b> Animal-free production</p>

Sandwich ELISA - Mouse/Rat CTGF Antibody Pair - BSA and Azide free (ab253451)

To learn more about the advantages of recombinant antibodies see [here](#).

**Please note:** All products are "FOR RESEARCH USE ONLY. NOT FOR USE IN DIAGNOSTIC PROCEDURES"

### **Our Abpromise to you: Quality guaranteed and expert technical support**

---

- Replacement or refund for products not performing as stated on the datasheet
- Valid for 12 months from date of delivery
- Response to your inquiry within 24 hours
  
- We provide support in Chinese, English, French, German, Japanese and Spanish
- Extensive multi-media technical resources to help you
- We investigate all quality concerns to ensure our products perform to the highest standards

If the product does not perform as described on this datasheet, we will offer a refund or replacement. For full details of the Abpromise, please visit <https://www.abcam.com/abpromise> or contact our technical team.

### **Terms and conditions**

---

- Guarantee only valid for products bought direct from Abcam or one of our authorized distributors