

Product datasheet

Mouse/Rat Cystatin C Antibody Pair - BSA and Azide free ab241713

Recombinant RabMAb

[4 Images](#)

Overview

Product name Mouse/Rat Cystatin C Antibody Pair - BSA and Azide free

Assay type ELISA set

Range 31.25 pg/ml - 2000 pg/ml

Species reactivity **Reacts with:** Mouse, Rat

Product overview The Antibody Pair can be used to quantify Mouse/Rat Cystatin C. BSA and Azide free antibody pairs include unconjugated capture and detector antibodies suitable for sandwich ELISAs. The antibodies are provided at an approximate concentration of 1 mg/ml as measured by the protein A280 method. The recommended antibody orientation is based on internal optimization for ELISA-based assays. Antibody orientation is assay dependent and needs to be optimized for each assay type. Both capture and detector antibodies are rabbit monoclonal antibodies delivering consistent, specific, and sensitive results.

For additional information on the performance of the antibody pair, see the equivalent SimpleStep ELISA® Kit ([ab201280](#)), which uses the same antibodies. However, due to differences in their formulation, this antibody pair cannot be used with the consumables provided with our SimpleStep ELISA Kits. Please note that the range provided for the pairs is only an estimation based on the performance of the related product using the same antibody pair. Performance of the antibody pair will depend on the specific characteristics of your assay. We guarantee the product works in sandwich ELISA, but we do not guarantee the sensitivity or dynamic range of the antibody pair in your assay.

Tested applications **Suitable for:** Sandwich ELISA

Platform Reagents

Properties

Storage instructions Store at +4°C. Please refer to protocols.

Carrier free Yes

Components	10 x 96 tests
Mouse/Rat Cystatin C Capture Antibody (unconjugated)	1 x 100µg
Mouse/Rat Cystatin C Detector Antibody (unconjugated)	1 x 100µg

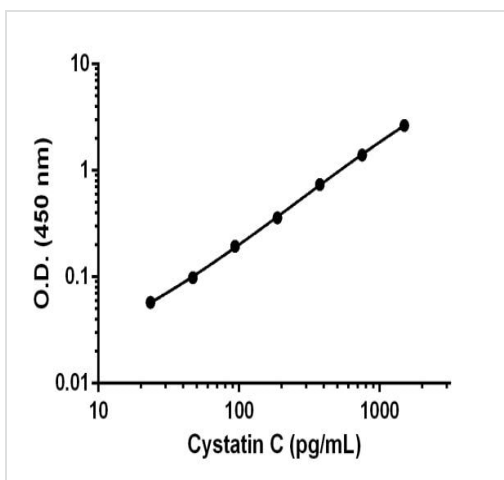
Function	As an inhibitor of cysteine proteinases, this protein is thought to serve an important physiological role as a local regulator of this enzyme activity.
Tissue specificity	Expressed in submandibular and sublingual saliva but not in parotid saliva (at protein level). Expressed in various body fluids, such as the cerebrospinal fluid and plasma. Expressed in highest levels in the epididymis, vas deferens, brain, thymus, and ovary and the lowest in the submandibular gland.
Involvement in disease	Amyloidosis 6 Macular degeneration, age-related, 11
Sequence similarities	Belongs to the cystatin family.
Post-translational modifications	The Thr-25 variant is O-glycosylated with a core 1 or possibly core 8 glycan. The signal peptide of the O-glycosylated Thr-25 variant is cleaved between Ala-20 and Val-21.
Cellular localization	Secreted.

Applications

The Abpromise guarantee Our **Abpromise guarantee** covers the use of ab241713 in the following tested applications. The application notes include recommended starting dilutions; optimal dilutions/concentrations should be determined by the end user.

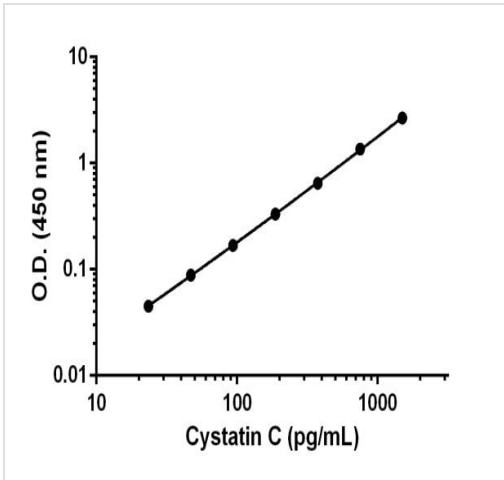
Application	Abreviews	Notes
Sandwich ELISA		Use at an assay dependent concentration.

Images



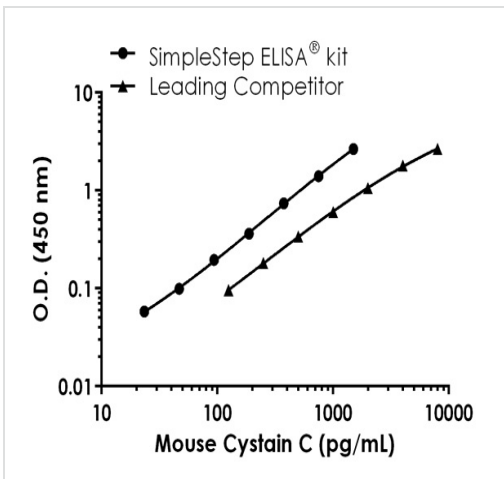
Representative standard curve from corresponding SimpleStep ELISA® Kit ([ab201280](#)), which uses the same antibody pair. For additional information on the performance of pair and kit, refer to the corresponding kit datasheet. Due to differences in the formulation and format of the antibodies in this pair, they cannot be used as substitutes for the antibody components in our SimpleStep ELISA® Kits.

Sandwich ELISA - Mouse/Rat Cystatin C Antibody
Pair - BSA and Azide free (ab241713)



Sandwich ELISA - Mouse/Rat Cystatin C Antibody
Pair - BSA and Azide free (ab241713)

Representative standard curve from corresponding SimpleStep ELISA® Kit ([ab201280](#)), which uses the same antibody pair. For additional information on the performance of pair and kit, refer to the corresponding kit datasheet. Due to differences in the formulation and format of the antibodies in this pair, they cannot be used as substitutes for the antibody components in our SimpleStep ELISA® Kits.



Sandwich ELISA - Mouse/Rat Cystatin C Antibody
Pair - BSA and Azide free (ab241713)

Representative standard curve from corresponding SimpleStep ELISA® Kit ([ab201280](#)), which uses the same antibody pair. For additional information on the performance of pair and kit, refer to the corresponding kit datasheet. Due to differences in the formulation and format of the antibodies in this pair, they cannot be used as substitutes for the antibody components in our SimpleStep ELISA® Kits.

Powered by recombinant antibodies

<p>Research with confidence Consistent and reproducible results</p>	<p>Long-term and scalable supply Recombinant technology</p>
<p>Success from the first experiment Confirmed specificity</p>	<p>Ethical standards compliant Animal-free production</p>

Sandwich ELISA - Mouse/Rat Cystatin C Antibody
Pair - BSA and Azide free (ab241713)

To learn more about the advantages of recombinant antibodies see [here](#).

Please note: All products are "FOR RESEARCH USE ONLY. NOT FOR USE IN DIAGNOSTIC PROCEDURES"

Our Abpromise to you: Quality guaranteed and expert technical support

- Replacement or refund for products not performing as stated on the datasheet
- Valid for 12 months from date of delivery
- Response to your inquiry within 24 hours

- We provide support in Chinese, English, French, German, Japanese and Spanish
- Extensive multi-media technical resources to help you
- We investigate all quality concerns to ensure our products perform to the highest standards

If the product does not perform as described on this datasheet, we will offer a refund or replacement. For full details of the Abpromise, please visit <https://www.abcam.com/abpromise> or contact our technical team.

Terms and conditions

- Guarantee only valid for products bought direct from Abcam or one of our authorized distributors