

# Total OXPHOS Human WB Antibody Cocktail ab110411

★★★★★ [4 Abreviews](#) [433 References](#) [2 Images](#)

### Overview

---

<b>Product name</b>	Total OXPHOS Human WB Antibody Cocktail
<b>Assay type</b>	Quantitative
<b>Species reactivity</b>	<b>Reacts with:</b> Human
<b>Product overview</b>	ab110411 contains 5 mAbs, one each against Complex I subunit NDUFB8 ( <a href="#">ab110242</a> ), Complex II subunit 30kDa ( <a href="#">ab14714</a> ), Complex III subunit Core 2 ( <a href="#">ab14745</a> ), Complex IV subunit II ( <a href="#">ab110258</a> ), and ATP synthase subunit alpha ( <a href="#">ab14748</a> ) as an optimized premixed cocktail. The cocktail is suitable for Western Blotting analysis of the relative levels of the 5 OXPHOS complexes in mitochondrial preparations from human sources.

Altered levels of assembly can arise from mutations in individual subunits, mutations in assembly factors for the complex(es), mtDNA depletion or as a result of physiological and or pathological changes e.g. hormone treatment, exercise, diet or oxidative stress.

The mAbs in the cocktail were chosen because they are against a subunit that is labile when its complex is not assembled. Moreover, the combination is readily resolved in SDS-PAGE when the appropriate gel conditions are used (Please refer to application notes).

The Western blot cocktail is supplied at a concentration of 1.5 mg/mL.

The five antibodies provided in the cocktail are all mouse monoclonal antibodies.

We recommend using a high pH CAPS buffer / PVDF transfer protocol when using this antibody for Western blot. Please contact us for more details.

Due to a policy change, the previously provided control for this kit has been removed.

We do not recommend to boiling samples since it will cause signal reduction of several bands. We recommend warming to 37°C for 30 minutes prior to loading.

### Notes

#### Related products

Review the [mitochondrial assay guide](#), or the full [metabolism assay guide](#) to learn about more assays for metabolites, metabolic enzymes, mitochondrial function, and oxidative stress, and also how to assay metabolic function in live cells using your plate reader.

Tested applications

Suitable for: WB

### Properties

#### Storage instructions

Store at +4°C. Please refer to protocols.

Components	360 µg
Premix Cocktail of 5 monoclonal antibodies	1 x 360µg

### Applications

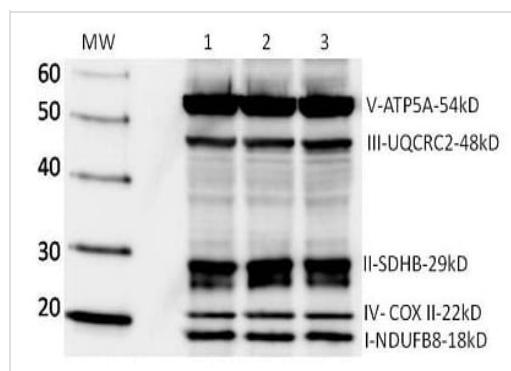
#### The Abpromise guarantee

Our **Abpromise guarantee** covers the use of ab110411 in the following tested applications.

The application notes include recommended starting dilutions; optimal dilutions/concentrations should be determined by the end user.

Application	Abreviews	Notes
WB		<p>Use at an assay dependent concentration. Recommended starting dilutions is 1:200 - 1:1000. However, optimal dilution should be established by the end-user.</p> <p>We recommend using a high pH CAPS / PVDF transfer protocol when using this antibody for Western blot. Please contact us for more details.</p> <p>... ..</p>

### Images



Western Blot Abreview Image

This image is courtesy of an anonymous Abreview

Gel: Non-reduced Denaturing (4-12%)

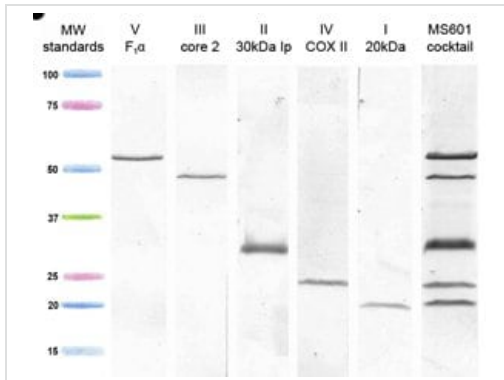
Lanes 1-3: contain 3 individual Human B cell lymphoma samples 50 µg loaded per lane.

Blocked for 1 hour with 5% Milk at room temperature.

ab110411 used as per instructions.

Secondary: HRP-conjugated anti-mouse IgG used at 1/300

Detection method: ECL+ 2 minutes exposure.



Western blot - MitoProfile® Total OXPHOS Human  
WB Antibody Cocktail (ab110411)

Each lane contains 10 µg of mitochondria isolated from MRC5 fibroblasts.

ab110411(MS601) was used to label lane 6, and the individual antibodies comprising the cocktail were used for lanes 1-5.

**Please note:** All products are "FOR RESEARCH USE ONLY. NOT FOR USE IN DIAGNOSTIC PROCEDURES"

### Our Abpromise to you: Quality guaranteed and expert technical support

- Replacement or refund for products not performing as stated on the datasheet
- Valid for 12 months from date of delivery
- Response to your inquiry within 24 hours
- We provide support in Chinese, English, French, German, Japanese and Spanish
- Extensive multi-media technical resources to help you
- We investigate all quality concerns to ensure our products perform to the highest standards

If the product does not perform as described on this datasheet, we will offer a refund or replacement. For full details of the Abpromise, please visit <https://www.abcam.com/abpromise> or contact our technical team.

### Terms and conditions

- Guarantee only valid for products bought direct from Abcam or one of our authorized distributors