


## Product datasheet

### Anti-14-3-3 gamma/YWHAG antibody ab155050

★★★★★ [1 Abreviews](#) [4 References](#) [5 Images](#)

#### Overview

<b>Product name</b>	Anti-14-3-3 gamma/YWHAG antibody
<b>Description</b>	Rabbit polyclonal to 14-3-3 gamma/YWHAG
<b>Host species</b>	Rabbit
<b>Tested applications</b>	<b>Suitable for:</b> WB, IHC-P, ICC/IF
<b>Species reactivity</b>	<b>Reacts with:</b> Mouse, Human <b>Predicted to work with:</b> Rat, Chicken, Cow, Monkey, Xenopus tropicalis 
<b>Immunogen</b>	Recombinant fragment corresponding to Human 14-3-3 gamma/YWHAG aa 1-179. Database link: <a href="#">P61981</a>
<b>Positive control</b>	293T, A431, H1299, HeLa, HepG2, MOLT4, Raji and Mouse brain whole cell lysate; HeLa cells; Human DLD1 xenograft tissue
<b>General notes</b>	<p>The Life Science industry has been in the grips of a reproducibility crisis for a number of years. Abcam is leading the way in addressing this with our range of recombinant monoclonal antibodies and knockout edited cell lines for gold-standard validation. Please check that this product meets your needs before purchasing.</p> <p>If you have any questions, special requirements or concerns, please send us an inquiry and/or contact our Support team ahead of purchase. Recommended alternatives for this product can be found below, along with publications, customer reviews and Q&amp;As</p>

#### Properties

<b>Form</b>	Liquid
<b>Storage instructions</b>	Shipped at 4°C. Upon delivery aliquot. Store at -20°C or -80°C. Avoid freeze / thaw cycle.
<b>Storage buffer</b>	pH: 7.00 Preservative: 0.025% Proclin 300 Constituents: 79% PBS, 20% Glycerol (glycerin, glycerine)
<b>Purity</b>	Immunogen affinity purified
<b>Clonality</b>	Polyclonal
<b>Isotype</b>	IgG

#### Applications

## The Abpromise guarantee

Our **Abpromise guarantee** covers the use of ab155050 in the following tested applications.

The application notes include recommended starting dilutions; optimal dilutions/concentrations should be determined by the end user.

Application	Abreviews	Notes
WB	★★★★★ (1)	1/1000 - 1/10000. Predicted molecular weight: 28 kDa.
IHC-P		1/100 - 1/1000. Perform heat mediated antigen retrieval with citrate buffer pH 6 before commencing with IHC staining protocol.
ICC/IF		1/100 - 1/1000.

## Target

### Function

Adapter protein implicated in the regulation of a large spectrum of both general and specialized signaling pathways. Binds to a large number of partners, usually by recognition of a phosphoserine or phosphothreonine motif. Binding generally results in the modulation of the activity of the binding partner.

### Tissue specificity

Highly expressed in brain, skeletal muscle, and heart.

### Sequence similarities

Belongs to the 14-3-3 family.

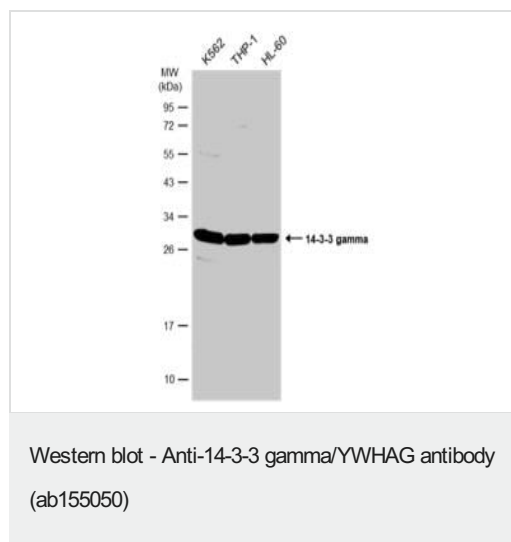
### Post-translational modifications

Phosphorylated by various PKC isozymes.

### Cellular localization

Cytoplasm.

## Images



**All lanes** : Anti-14-3-3 gamma/YWHAG antibody (ab155050) at 1/1000 dilution

**Lane 1** : K562 cell lysate

**Lane 2** : THP-1 cell lysate

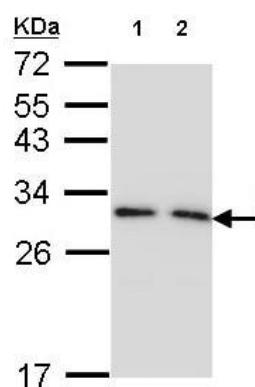
**Lane 3** : HL-60 cell lysate

Lysates/proteins at 30 µg per lane.

### Secondary

**All lanes** : HRP-conjugated anti-rabbit IgG antibody

**Predicted band size:** 28 kDa



Western blot - Anti-14-3-3 gamma/YWHAG antibody (ab155050)

**All lanes** : Anti-14-3-3 gamma/YWHAG antibody (ab155050) at 1/1000 dilution

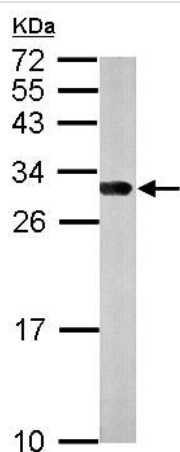
**Lane 1** : 293T whole cell lysate

**Lane 2** : A431 whole cell lysate

Lysates/proteins at 30 µg per lane.

**Predicted band size:** 28 kDa

12% SDS PAGE

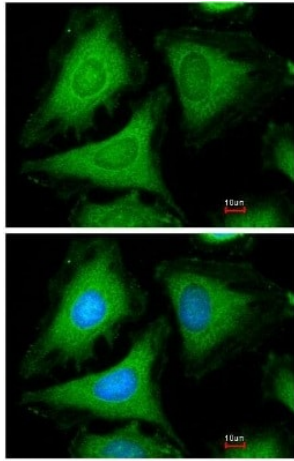


Western blot - Anti-14-3-3 gamma/YWHAG antibody (ab155050)

Anti-14-3-3 gamma/YWHAG antibody (ab155050) at 1/10000 dilution + Mouse brain whole cell lysate at 50 µg

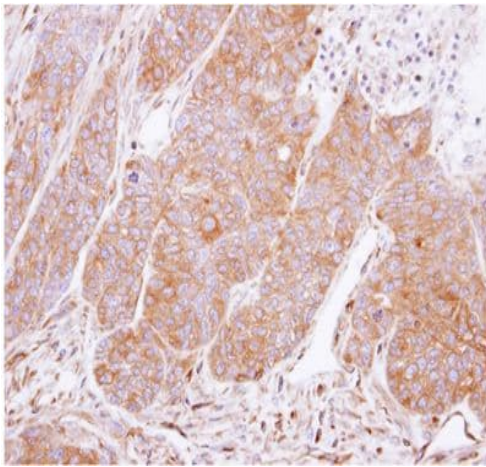
**Predicted band size:** 28 kDa

12% SDS PAGE



Immunofluorescence analysis of methanol fixed HeLa cells labeling 14-3-3 gamma/YWHAG with ab155050 at 1/200 dilution. Lower image costained with Hoechst 33342.

Immunocytochemistry/ Immunofluorescence - Anti-14-3-3 gamma/YWHAG antibody (ab155050)



Immunohistochemical analysis of paraffin embedded Human DLD1 xenograft tissue labeling 14-3-3 gamma/YWHAG with ab155050 at 1/500 dilution.

Immunohistochemistry (Formalin/PFA-fixed paraffin-embedded sections) - Anti-14-3-3 gamma/YWHAG antibody (ab155050)

**Please note:** All products are "FOR RESEARCH USE ONLY. NOT FOR USE IN DIAGNOSTIC PROCEDURES"

### Our Abpromise to you: Quality guaranteed and expert technical support

- Replacement or refund for products not performing as stated on the datasheet
- Valid for 12 months from date of delivery
- Response to your inquiry within 24 hours
- We provide support in Chinese, English, French, German, Japanese and Spanish
- Extensive multi-media technical resources to help you
- We investigate all quality concerns to ensure our products perform to the highest standards

If the product does not perform as described on this datasheet, we will offer a refund or replacement. For full details of the Abpromise, please visit <https://www.abcam.com/abpromise> or contact our technical team.

## Terms and conditions

---

- Guarantee only valid for products bought direct from Abcam or one of our authorized distributors