


Product datasheet

Anti-14-3-3 gamma/YWHAG antibody [EPR9654(B)] ab137048

KO VALIDATED Recombinant RabMAb[®]

[3 Images](#)

Overview

Product name	Anti-14-3-3 gamma/YWHAG antibody [EPR9654(B)]
Description	Rabbit monoclonal [EPR9654(B)] to 14-3-3 gamma/YWHAG
Host species	Rabbit
Tested applications	Suitable for: WB Unsuitable for: Flow Cyt, ICC/IF, IHC-P or IP
Species reactivity	Reacts with: Human Predicted to work with: Mouse, Rat 
Immunogen	Synthetic peptide. This information is proprietary to Abcam and/or its suppliers.
Positive control	WB: HEK293T, A431, HeLa, K562 and A549 cell lysates; Human fetal heart lysate.
General notes	This product is a recombinant monoclonal antibody, which offers several advantages including: <ul style="list-style-type: none">- High batch-to-batch consistency and reproducibility- Improved sensitivity and specificity- Long-term security of supply- Animal-free production For more information see here . Our RabMAb [®] technology is a patented hybridoma-based technology for making rabbit monoclonal antibodies. For details on our patents, please refer to RabMAb[®] patents .

Properties

Form	Liquid
Storage instructions	Shipped at 4°C. Upon delivery aliquot and store at -20°C. Avoid freeze / thaw cycles.
Storage buffer	pH: 7.2 Preservative: 0.01% Sodium azide Constituents: 9% PBS, 40% Glycerol (glycerin, glycerine), 0.05% BSA, 50% Tissue culture supernatant
Purity	Tissue culture supernatant
Clonality	Monoclonal

Clone number EPR9654(B)

Isotype IgG

Applications

The Abpromise guarantee Our **Abpromise guarantee** covers the use of ab137048 in the following tested applications.

The application notes include recommended starting dilutions; optimal dilutions/concentrations should be determined by the end user.

Application	Abreviews	Notes
WB		1/1000 - 1/10000. Predicted molecular weight: 28 kDa.

Application notes Is unsuitable for Flow Cyt, ICC/IF, IHC-P or IP.

Target

Function Adapter protein implicated in the regulation of a large spectrum of both general and specialized signaling pathways. Binds to a large number of partners, usually by recognition of a phosphoserine or phosphothreonine motif. Binding generally results in the modulation of the activity of the binding partner.

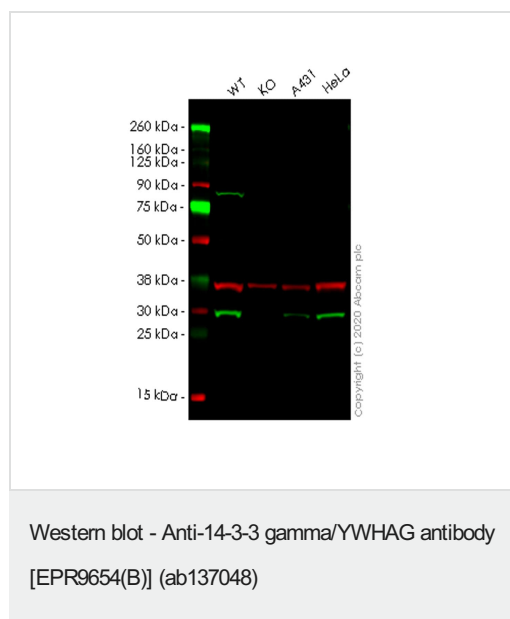
Tissue specificity Highly expressed in brain, skeletal muscle, and heart.

Sequence similarities Belongs to the 14-3-3 family.

Post-translational modifications Phosphorylated by various PKC isozymes.

Cellular localization Cytoplasm.

Images



All lanes : Anti-14-3-3 gamma/YWHAG antibody [EPR9654(B)] (ab137048) at 1/1000 dilution

Lane 1 : Wild-type HEK293T cell lysate

Lane 2 : YWHAG knockout HEK293T cell lysate

Lane 3 : A431 cell lysate

Lane 4 : HeLa cell lysate

Lysates/proteins at 20 µg per lane.

Secondary

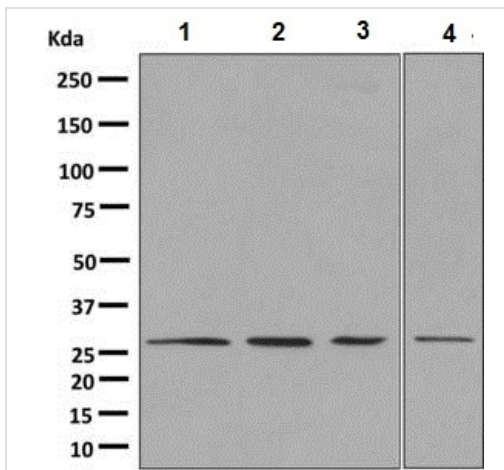
All lanes : Goat anti-Rabbit IgG H&L (IRDye® 800CW) preadsorbed (**ab216773**) at 1/10000 dilution

Predicted band size: 28 kDa

Observed band size: 28 kDa

Lanes 1-4: Merged signal (red and green). Green - ab137048 observed at 28 kDa. Red - loading control **ab8245** observed at 36 kDa.

ab137048 Anti-14-3-3 gamma/YWHAG antibody [EPR9654(B)] was shown to specifically react with 14-3-3 gamma/YWHAG in wild-type HEK293T cells. Loss of signal was observed when knockout cell line **ab266734** (knockout cell lysate **ab257805**) was used. Wild-type and 14-3-3 gamma/YWHAG knockout samples were subjected to SDS-PAGE. ab137048 and Anti-GAPDH antibody [6C5] - Loading Control (**ab8245**) were incubated overnight at 4°C at 1 in 1000 dilution and 1 in 20000 dilution respectively. Blots were developed with Goat anti-Rabbit IgG H&L (IRDye® 800CW) preadsorbed (**ab216773**) and Goat anti-Mouse IgG H&L (IRDye® 680RD) preadsorbed (**ab216776**) secondary antibodies at 1 in 20000 dilution for 1 hour at room temperature before imaging.



Western blot - Anti-14-3-3 gamma/YWHAG antibody [EPR9654(B)] (ab137048)

All lanes : Anti-14-3-3 gamma/YWHAG antibody [EPR9654(B)] (ab137048) at 1/1000 dilution

Lane 1 : HeLa lysate

Lane 2 : K562 lysate

Lane 3 : A549 lysate

Lane 4 : Human fetal heart lysate

Lysates/proteins at 10 µg per lane.

Secondary

All lanes : HRP conjugated Goat anti Rabbit IgG at 1/2000 dilution

Predicted band size: 28 kDa

Why choose a recombinant antibody?



Research with confidence
Consistent and reproducible results



Long-term and scalable supply
Recombinant technology



Success from the first experiment
Confirmed specificity



Ethical standards compliant
Animal-free production

Anti-14-3-3 gamma/YWHAG antibody [EPR9654(B)]
(ab137048)

Please note: All products are "FOR RESEARCH USE ONLY. NOT FOR USE IN DIAGNOSTIC PROCEDURES"

Our Abpromise to you: Quality guaranteed and expert technical support

- Replacement or refund for products not performing as stated on the datasheet
- Valid for 12 months from date of delivery
- Response to your inquiry within 24 hours
- We provide support in Chinese, English, French, German, Japanese and Spanish
- Extensive multi-media technical resources to help you
- We investigate all quality concerns to ensure our products perform to the highest standards

If the product does not perform as described on this datasheet, we will offer a refund or replacement. For full details of the Abpromise, please visit <https://www.abcam.com/abpromise> or contact our technical team.

Terms and conditions

- Guarantee only valid for products bought direct from Abcam or one of our authorized distributors