


Product datasheet

Anti-14-3-3 gamma/YWHAG antibody [EPR9655(B)] ab137106

Recombinant RabMAb

[2 References](#) [4 Images](#)

Overview

Product name	Anti-14-3-3 gamma/YWHAG antibody [EPR9655(B)]
Description	Rabbit monoclonal [EPR9655(B)] to 14-3-3 gamma/YWHAG
Host species	Rabbit
Tested applications	Suitable for: Flow Cyt (Intra), WB Unsuitable for: ICC/IF, IHC-P or IP
Species reactivity	Reacts with: Human Predicted to work with: Mouse, Rat 
Immunogen	Synthetic peptide within Human 14-3-3 gamma/YWHAG aa 150-250. The exact sequence is proprietary.
Positive control	HeLa, A431, 293T and K562 cell lysates; K562 cells. WB: 14-3-3 gamma (YWHAG) Human Recombinant Protein
General notes	<p>This product is a recombinant monoclonal antibody, which offers several advantages including:</p> <ul style="list-style-type: none"> - High batch-to-batch consistency and reproducibility - Improved sensitivity and specificity - Long-term security of supply - Animal-free production <p>For more information see here.</p> <p>Our RabMAb[®] technology is a patented hybridoma-based technology for making rabbit monoclonal antibodies. For details on our patents, please refer to RabMAb[®] patents.</p>

Properties

Form	Liquid
Storage instructions	Shipped at 4°C. Store at -20°C.
Storage buffer	pH: 7.2 Preservative: 0.01% Sodium azide Constituents: 9% PBS, 40% Glycerol (glycerin, glycerine), 0.05% BSA, 50% Tissue culture supernatant

Purity	Tissue culture supernatant
Clonality	Monoclonal
Clone number	EPR9655(B)
Isotype	IgG

Applications

The Abpromise guarantee Our **Abpromise guarantee** covers the use of ab137106 in the following tested applications.

The application notes include recommended starting dilutions; optimal dilutions/concentrations should be determined by the end user.

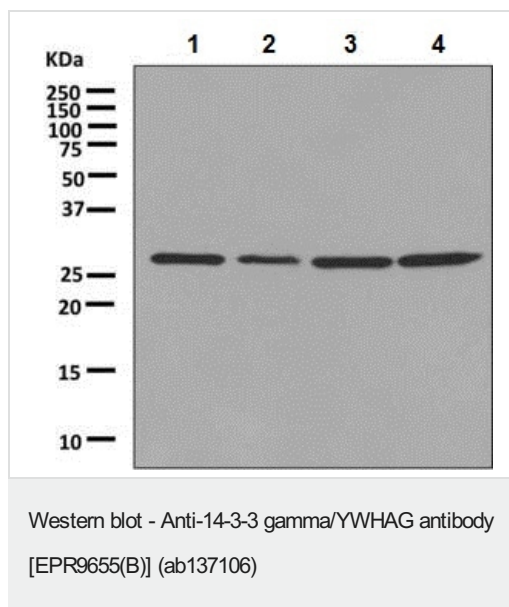
Application	Abreviews	Notes
Flow Cyt (Intra)		1/10 - 1/100. <u>ab172730</u> - Rabbit monoclonal IgG, is suitable for use as an isotype control with this antibody.
WB		1/1000 - 1/10000. Predicted molecular weight: 28 kDa.

Application notes Is unsuitable for ICC/IF, IHC-P or IP.

Target

Function	Adapter protein implicated in the regulation of a large spectrum of both general and specialized signaling pathways. Binds to a large number of partners, usually by recognition of a phosphoserine or phosphothreonine motif. Binding generally results in the modulation of the activity of the binding partner.
Tissue specificity	Highly expressed in brain, skeletal muscle, and heart.
Sequence similarities	Belongs to the 14-3-3 family.
Post-translational modifications	Phosphorylated by various PKC isozymes.
Cellular localization	Cytoplasm.

Images



All lanes : Anti-14-3-3 gamma/YWHAG antibody [EPR9655(B)] (ab137106) at 1/1000 dilution

Lane 1 : HeLa cell lysate

Lane 2 : A431 cell lysate

Lane 3 : 293T cell lysate

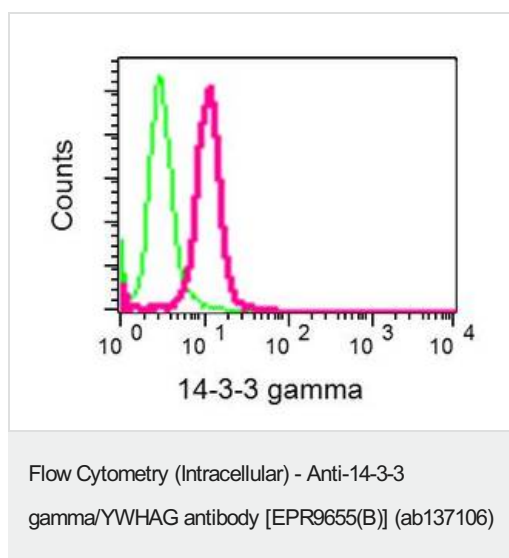
Lane 4 : K562 cell lysate

Lysates/proteins at 10 µg per lane.

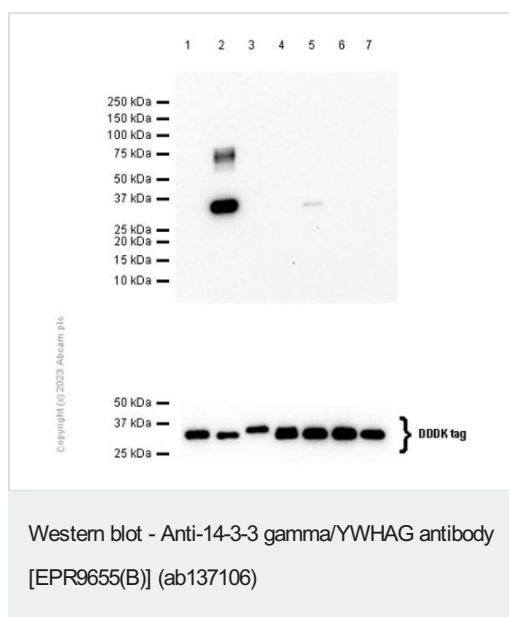
Secondary

All lanes : HRP-labelled Goat anti-Rabbit at 1/2000 dilution

Predicted band size: 28 kDa



Intracellular flow cytometric analysis of K562 cells labelling 14-3-3-gamma with ab137106 at 1/10 dilution (red). Negative Rabbit IgG control shown in green.



All lanes : Anti-14-3-3 gamma/YWHAG antibody [EPR9655(B)] (ab137106) at 1/1000 dilution

Lane 1 : 14-3-3 beta (YWHAB) Human Recombinant Protein 50 ng, with DDDK tagged

Lane 2 : 14-3-3 gamma (YWHAG) Human Recombinant Protein 50 ng, with DDDK tagged

Lane 3 : 14-3-3 epsilon (YWHA E) Human Recombinant Protein 50 ng, with DDDK tagged

Lane 4 : 14-3-3 zeta (YWHA Z) Human Recombinant Protein 50 ng, with DDDK tagged

Lane 5 : 14-3-3 eta (YWHA H) Human Recombinant Protein 50 ng, with DDDK tagged

Lane 6 : 14-3-3 theta (YWHA Q) Human Recombinant Protein 50 ng, with DDDK tagged

Lane 7 : 14-3-3 sigma (SFN) Human Recombinant Protein 50 ng,
with DDDK tagged

Secondary

All lanes : Goat Anti-Rabbit IgG H&L (HRP) (**ab97051**) at 1/20000
dilution


Predicted band size: 28 kDa

Observed band size: 28 kDa

Exposure time: 20 seconds

Blocking and dilution buffer: 5% NFDM/TBST

Why choose a recombinant antibody?



- Research with confidence**
Consistent and reproducible results
- Long-term and scalable supply**
Recombinant technology
- Success from the first experiment**
Confirmed specificity
- Ethical standards compliant**
Animal-free production

Anti-14-3-3 gamma/YWHAG antibody [EPR9655(B)]
(ab137106)

Please note: All products are "FOR RESEARCH USE ONLY. NOT FOR USE IN DIAGNOSTIC PROCEDURES"

Our Abpromise to you: Quality guaranteed and expert technical support

- Replacement or refund for products not performing as stated on the datasheet
- Valid for 12 months from date of delivery
- Response to your inquiry within 24 hours
- We provide support in Chinese, English, French, German, Japanese and Spanish
- Extensive multi-media technical resources to help you
- We investigate all quality concerns to ensure our products perform to the highest standards

If the product does not perform as described on this datasheet, we will offer a refund or replacement. For full details of the Abpromise, please visit <https://www.abcam.com/abpromise> or contact our technical team.

Terms and conditions

- Guarantee only valid for products bought direct from Abcam or one of our authorized distributors