


Product datasheet

Anti-14-3-3 sigma/SFN antibody ab77187

[3 References](#) [4 Images](#)

Overview

Product name	Anti-14-3-3 sigma/SFN antibody
Description	Goat polyclonal to 14-3-3 sigma/SFN
Host species	Goat
Tested applications	Suitable for: WB, IHC-P
Species reactivity	Reacts with: Mouse, Rat, Human Predicted to work with: Sheep, Cow, Dog, Pig, Zebrafish, Dictyostelium discoideum, Rainbow trout 
Immunogen	Synthetic peptide corresponding to Human 14-3-3 sigma/SFN (internal sequence). Sequence: DLHTLSEDSYKDST

Database link: [P31947](#)

 [Run BLAST with](#)

 [Run BLAST with](#)

General notes

The Life Science industry has been in the grips of a reproducibility crisis for a number of years. Abcam is leading the way in addressing this with our range of recombinant monoclonal antibodies and knockout edited cell lines for gold-standard validation. Please check that this product meets your needs before purchasing.

If you have any questions, special requirements or concerns, please send us an inquiry and/or contact our Support team ahead of purchase. Recommended alternatives for this product can be found below, along with publications, customer reviews and Q&As

Properties

Form	Liquid
Storage instructions	Shipped at 4°C. Upon delivery aliquot and store at -20°C. Avoid freeze / thaw cycles.
Storage buffer	pH: 7.30 Preservative: 0.02% Sodium azide Constituents: 0.5% BSA, Tris buffered saline
Purity	Immunogen affinity purified
Purification notes	Purified from goat serum by ammonium sulphate precipitation followed by antigen affinity chromatography using the immunizing peptide.

Clonality	Polyclonal
Isotype	IgG

Applications

The Abpromise guarantee Our **Abpromise guarantee** covers the use of ab77187 in the following tested applications.

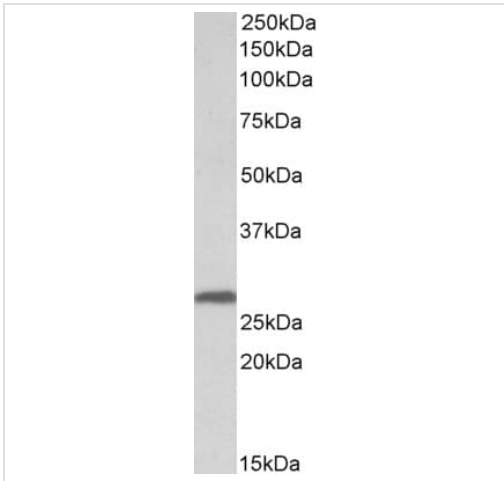
The application notes include recommended starting dilutions; optimal dilutions/concentrations should be determined by the end user.

Application	Abreviews	Notes
WB		Use a concentration of 0.03 - 0.1 µg/ml. Detects a band of approximately 28 kDa (predicted molecular weight: 28 kDa). 1 hour primary incubation is recommended for this product.
IHC-P		Use a concentration of 2 - 4 µg/ml.

Target

Function	Adapter protein implicated in the regulation of a large spectrum of both general and specialized signaling pathways. Binds to a large number of partners, usually by recognition of a phosphoserine or phosphothreonine motif. Binding generally results in the modulation of the activity of the binding partner. When bound to KRT17, regulates protein synthesis and epithelial cell growth by stimulating Akt/mTOR pathway. May also regulate MDM2 autoubiquitination and degradation and thereby activate p53/TP53. p53-regulated inhibitor of G2/M progression.
Tissue specificity	Present mainly in tissues enriched in stratified squamous keratinizing epithelium.
Sequence similarities	Belongs to the 14-3-3 family.
Post-translational modifications	Ubiquitinated. Ubiquitination by RFFL induces proteasomal degradation and indirectly regulates p53/TP53 activation.
Cellular localization	Cytoplasm. Nucleus. Secreted. May be secreted by a non-classical secretory pathway.

Images



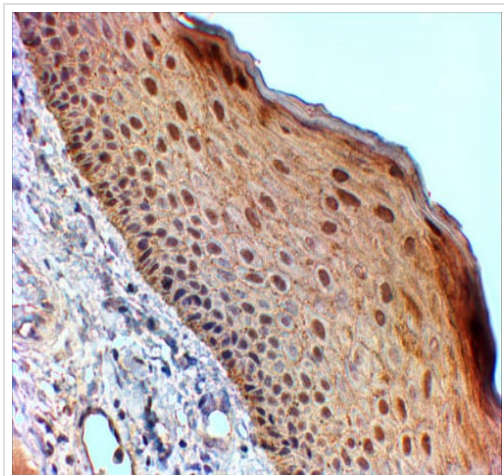
Western blot - Anti-14-3-3 sigma/SFN antibody (ab77187)

Anti-14-3-3 sigma/SFN antibody (ab77187) at 0.03 µg/ml + Human skin tissue lysate in RIPA buffer at 35 µg

Predicted band size: 28 kDa

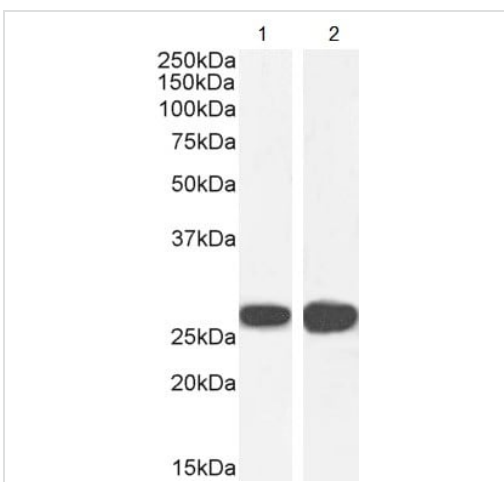
Observed band size: 27 kDa

Primary incubation was 1 hour. Detected using chemiluminescence.



Immunohistochemistry (Formalin/PFA-fixed paraffin-embedded sections) - Anti-14-3-3 sigma/SFN antibody (ab77187)

Immunohistochemical analysis of paraffin embedded Human Skin tissue labeling 14-3-3 sigma/SFN with ab77187 at 2 µg/ml. Tissue underwent antigen retrieval in steam with Tris/EDTA buffer (pH 9.0). The HRP-staining procedure was used for detection.



Western blot - Anti-14-3-3 sigma/SFN antibody (ab77187)

All lanes : Anti-14-3-3 sigma/SFN antibody (ab77187) at 0.03 µg/ml

Lane 1 : A431 cell lysate in RIPA buffer

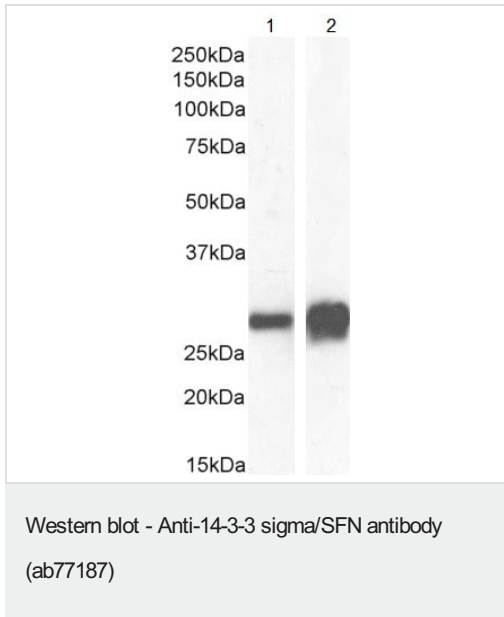
Lane 2 : U2OS cell lysate in RIPA buffer

Lysates/proteins at 35 µg per lane.

Predicted band size: 28 kDa

Observed band size: 27 kDa

Primary incubation was 1 hour. Detected using chemiluminescence.



All lanes : Anti-14-3-3 sigma/SFN antibody (ab77187) at 0.03 $\mu\text{g/ml}$

Lane 1 : Mouse skin tissue lysate in RIPA buffer

Lane 2 : Rat skin tissue lysate in RIPA buffer

Lysates/proteins at 35 μg per lane.

Predicted band size: 28 kDa

Observed band size: 27 kDa

Primary incubation was 1 hour. Detected using chemiluminescence.

Please note: All products are "FOR RESEARCH USE ONLY. NOT FOR USE IN DIAGNOSTIC PROCEDURES"

Our Abpromise to you: Quality guaranteed and expert technical support

- Replacement or refund for products not performing as stated on the datasheet
- Valid for 12 months from date of delivery
- Response to your inquiry within 24 hours
- We provide support in Chinese, English, French, German, Japanese and Spanish
- Extensive multi-media technical resources to help you
- We investigate all quality concerns to ensure our products perform to the highest standards

If the product does not perform as described on this datasheet, we will offer a refund or replacement. For full details of the Abpromise, please visit <https://www.abcam.com/abpromise> or contact our technical team.

Terms and conditions

- Guarantee only valid for products bought direct from Abcam or one of our authorized distributors