




Product datasheet

Anti-ABCA2 antibody ab179930

★★★★★ [2 Abreviews](#) [1 Image](#)

Overview

Product name	Anti-ABCA2 antibody
Description	Goat polyclonal to ABCA2
Host species	Goat
Specificity	ab179930 is expected to recognize both reported isoforms (NP_001597.2; NP_997698.1).
Tested applications	Suitable for: IHC-P
Species reactivity	Reacts with: Human Predicted to work with: Mouse, Rat, Horse, Chicken, Dog, Monkey, Zebrafish, Gorilla 
Immunogen	Synthetic peptide corresponding to Human ABCA2 aa 2362-2375 (internal sequence) (Cysteine residue). Sequence: KKQSDNLEQQETEP Database link: Q9BZC7 <div>  Run BLAST with  Run BLAST with </div>
Positive control	Human brain cortex tissue.
General notes	<p>The Life Science industry has been in the grips of a reproducibility crisis for a number of years. Abcam is leading the way in addressing this with our range of recombinant monoclonal antibodies and knockout edited cell lines for gold-standard validation. Please check that this product meets your needs before purchasing.</p> <p>If you have any questions, special requirements or concerns, please send us an inquiry and/or contact our Support team ahead of purchase. Recommended alternatives for this product can be found below, along with publications, customer reviews and Q&As</p>

Properties

Form	Liquid
Storage instructions	Shipped at 4°C. Store at +4°C short term (1-2 weeks). Upon delivery aliquot. Store at -20°C long term. Avoid freeze / thaw cycle.
Storage buffer	pH: 7.30 Preservative: 0.02% Sodium azide Constituents: 0.5% BSA, 99% Tris buffered saline

Purity	Immunogen affinity purified
Clonality	Polyclonal
Isotype	IgG

Applications

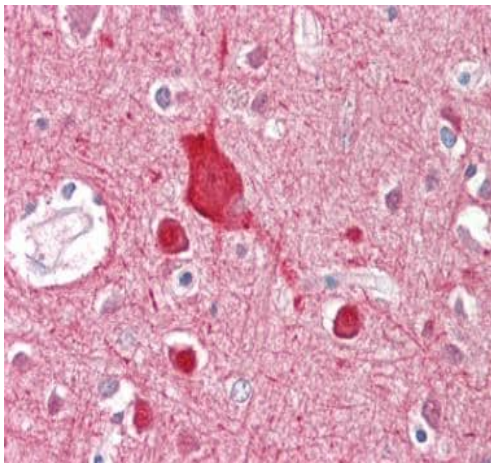
The Abpromise guarantee Our **Abpromise guarantee** covers the use of ab179930 in the following tested applications. The application notes include recommended starting dilutions; optimal dilutions/concentrations should be determined by the end user.

Application	Abreviews	Notes
IHC-P		Use a concentration of 3.75 µg/ml.

Target

Function	Probable transporter, its natural substrate has not been found yet. May have a role in macrophage lipid metabolism and neural development.
Tissue specificity	Highly expressed in the brain, whereas lower levels of expression is observed in kidney and liver.
Sequence similarities	Belongs to the ABC transporter superfamily. ABCA family. Contains 2 ABC transporter domains.
Cellular localization	Endosome. Membrane. Lysosome. Membrane. Forms discrete, punctate intracellular vesicles.

Images



Immunohistochemical analysis of formalin-fixed, paraffin embedded Human brain cortex tissue labelling ABCA2 with ab179930 at 3.75 µg/ml.

Immunohistochemistry (Formalin/PFA-fixed paraffin-embedded sections) - Anti-ABCA2 antibody (ab179930)

Please note: All products are "FOR RESEARCH USE ONLY. NOT FOR USE IN DIAGNOSTIC PROCEDURES"

Our Abpromise to you: Quality guaranteed and expert technical support

- Replacement or refund for products not performing as stated on the datasheet
- Valid for 12 months from date of delivery
- Response to your inquiry within 24 hours

- We provide support in Chinese, English, French, German, Japanese and Spanish
- Extensive multi-media technical resources to help you
- We investigate all quality concerns to ensure our products perform to the highest standards

If the product does not perform as described on this datasheet, we will offer a refund or replacement. For full details of the Abpromise, please visit <https://www.abcam.com/abpromise> or contact our technical team.

Terms and conditions

- Guarantee only valid for products bought direct from Abcam or one of our authorized distributors