

Product datasheet

Anti-ABCE1 antibody [EPR15373(B)] - C-terminal ab185548

Recombinant RabMAb

[10 References](#) [9 Images](#)

Overview

Product name	Anti-ABCE1 antibody [EPR15373(B)] - C-terminal
Description	Rabbit monoclonal [EPR15373(B)] to ABCE1 - C-terminal
Host species	Rabbit
Specificity	The rat recommendation is based on the WB results. We do not guarantee IHC-P for rat.
Tested applications	Suitable for: Flow Cyt (Intra), ICC/IF, IP, WB, IHC-P
Species reactivity	Reacts with: Mouse, Rat, Human
Immunogen	Synthetic peptide. This information is proprietary to Abcam and/or its suppliers.
General notes	<p>This product is a recombinant monoclonal antibody, which offers several advantages including:</p> <ul style="list-style-type: none"> - High batch-to-batch consistency and reproducibility - Improved sensitivity and specificity - Long-term security of supply - Animal-free production <p>For more information see here.</p> <p>Our RabMAb[®] technology is a patented hybridoma-based technology for making rabbit monoclonal antibodies. For details on our patents, please refer to RabMAb[®] patents.</p>

Properties

Form	Liquid
Storage instructions	Shipped at 4°C. Store at +4°C short term (1-2 weeks). Upon delivery aliquot. Store at -20°C long term. Avoid freeze / thaw cycle.
Storage buffer	<p>pH: 7.2</p> <p>Preservative: 0.01% Sodium azide</p> <p>Constituents: 40% Glycerol (glycerin, glycerine), 59% PBS, 0.05% BSA</p>
Purity	Protein A purified
Clonality	Monoclonal
Clone number	EPR15373(B)
Isotype	IgG

Applications

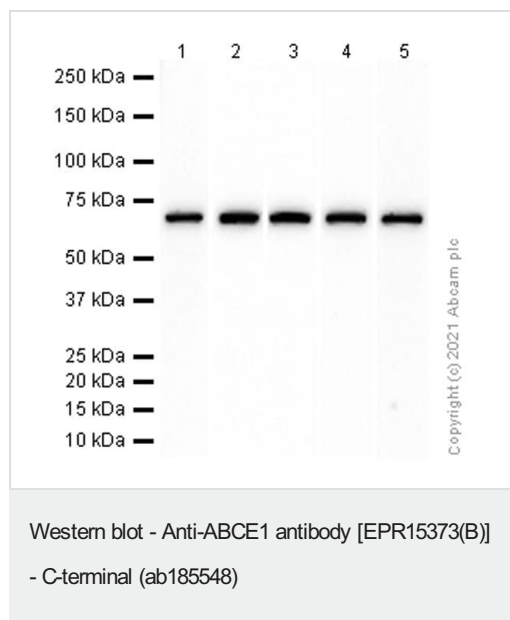
The Abpromise guarantee Our **Abpromise guarantee** covers the use of ab185548 in the following tested applications. The application notes include recommended starting dilutions; optimal dilutions/concentrations should be determined by the end user.

Application	Abreviews	Notes
Flow Cyt (Intra)		1/220. ab172730 - Rabbit monoclonal IgG, is suitable for use as an isotype control with this antibody.
ICC/IF		1/100 - 1/250.
IP		1/30 - 1/50.
WB		1/1000 - 1/10000. Detects a band of approximately 67 kDa (predicted molecular weight: 67 kDa).
IHC-P		1/100. Perform heat mediated antigen retrieval with Tris/EDTA buffer pH 9.0 before commencing with IHC staining protocol. The rat recommendation is based on the WB results. We do not guarantee IHC-P for rat.

Target

Function	Antagonizes the binding of 2-5A (5'-phosphorylated 2',5'-linked oligoadenylates) by RNase L through direct interaction with RNase L and therefore inhibits its endoribonuclease activity. May play a central role in the regulation of mRNA turnover. Antagonizes the anti-viral effect of the interferon-regulated 2-5A/RNase L pathway. May act as a chaperone for post-translational events during HIV-1 capsid assembly.
Sequence similarities	Belongs to the ABC transporter superfamily. ABCE family. Contains 2 4Fe-4S ferredoxin-type domains. Contains 2 ABC transporter domains.
Cellular localization	Cytoplasm. Mitochondrion. Localized to clusters of virus formation at the plasma membrane.

Images



All lanes : Anti-ABCE1 antibody [EPR15373(B)] - C-terminal (ab185548) at 1/5000 dilution (Purified)

Lane 1 : HeLa (Human cervix adenocarcinoma epithelial cell) whole cell lysate

Lane 2 : K-562 (Human chronic myelogenous leukemia lymphoblast) whole cell lysate

Lane 3 : Jurkat (Human T cell leukemia T lymphocyte) whole cell lysate

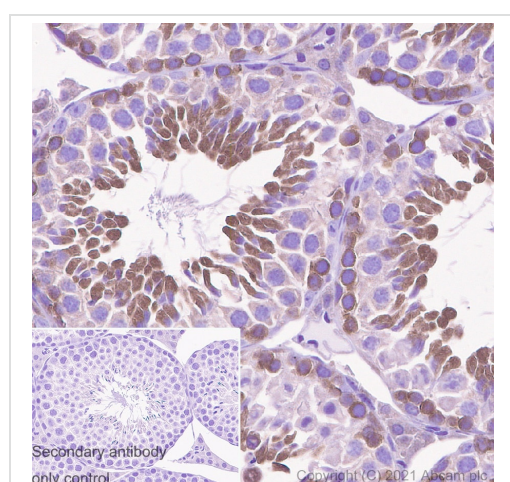
Lane 4 : NIH/3T3 (Mouse embryonic fibroblast) whole cell lysate

Lane 5 : PC-12 (Rat adrenal gland pheochromocytoma) whole cell lysate

Secondary

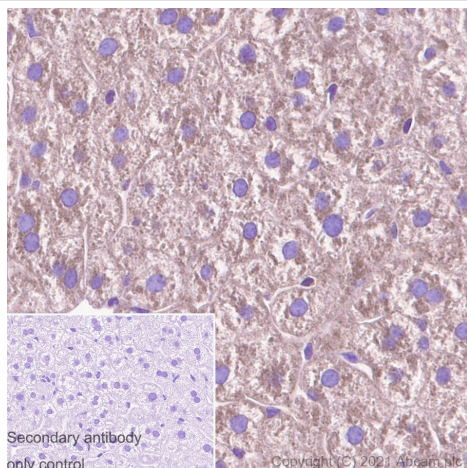
All lanes : Goat Anti-Rabbit IgG H&L (HRP) ([ab97051](#)) at 1/20000 dilution

Predicted band size: 67 kDa



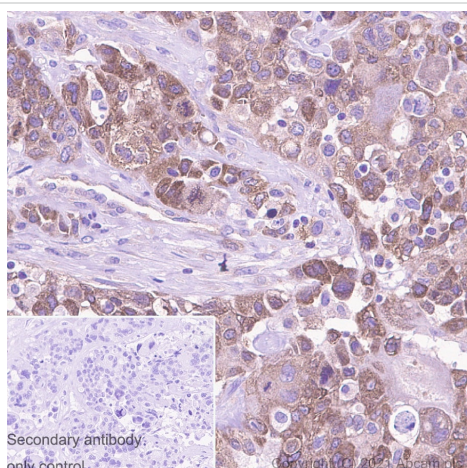
Immunohistochemistry (Formalin/PFA-fixed paraffin-embedded sections) - Anti-ABCE1 antibody [EPR15373(B)] - C-terminal (ab185548)

Immunohistochemistry (Formalin/PFA-fixed paraffin-embedded sections) analysis of mouse testis tissue sections labeling ABCE1 with Purified ab185548 at 1:300 (3.67 µg/ml). Heat mediated antigen retrieval was performed using Heat mediated antigen retrieval using Bond™ Epitope Retrieval Solution 2 (pH 9.0) . Tissue was counterstained with Hematoxylin. Rabbit specific IHC polymer detection kit HRP/DAB ([ab209101](#)) secondary antibody was used at 1:0 dilution. PBS instead of the primary antibody was used as the negative control.



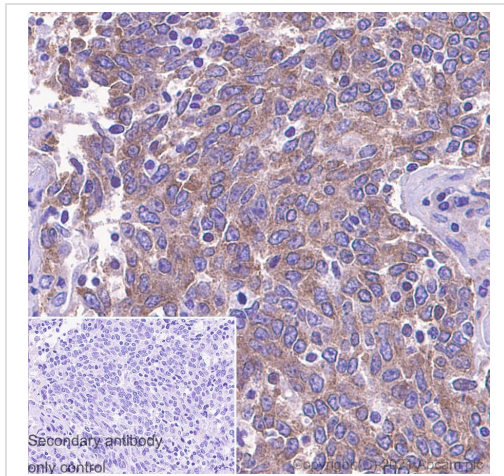
Immunohistochemistry (Formalin/PFA-fixed paraffin-embedded sections) - Anti-ABCE1 antibody [EPR15373(B)] - C-terminal (ab185548)

Immunohistochemistry (Formalin/PFA-fixed paraffin-embedded sections) analysis of mouse liver tissue sections labeling ABCE1 with Purified ab185548 at 1:300 (3.67 $\mu\text{g/ml}$). Heat mediated antigen retrieval was performed using Heat mediated antigen retrieval using Bond™ Epitope Retrieval Solution 2 (pH 9.0) . Tissue was counterstained with Hematoxylin. Rabbit specific IHC polymer detection kit HRP/DAB (**ab209101**) secondary antibody was used at 1:0 dilution. PBS instead of the primary antibody was used as the negative control.



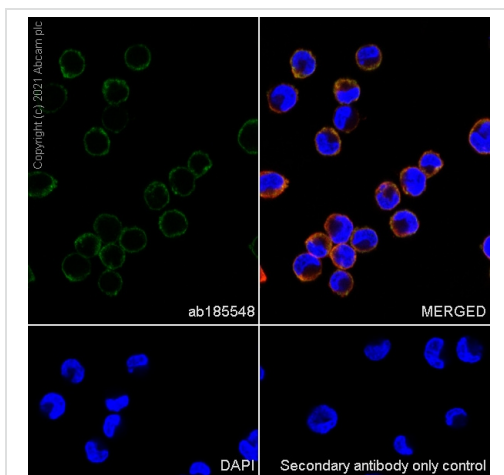
Immunohistochemistry (Formalin/PFA-fixed paraffin-embedded sections) - Anti-ABCE1 antibody [EPR15373(B)] - C-terminal (ab185548)

Immunohistochemistry (Formalin/PFA-fixed paraffin-embedded sections) analysis of human breast carcinoma tissue sections labeling ABCE1 with Purified ab185548 at 1:100 (11 $\mu\text{g/ml}$). Heat mediated antigen retrieval was performed using Heat mediated antigen retrieval using Bond™ Epitope Retrieval Solution 2 (pH 9.0) . Tissue was counterstained with Hematoxylin. Rabbit specific IHC polymer detection kit HRP/DAB (**ab209101**) secondary antibody was used at 1:0 dilution. PBS instead of the primary antibody was used as the negative control.



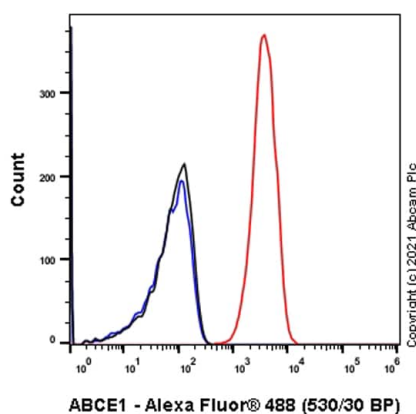
Immunohistochemistry (Formalin/PFA-fixed paraffin-embedded sections) - Anti-ABCE1 antibody
[EPR15373(B)] - C-terminal (ab185548)

Immunohistochemistry (Formalin/PFA-fixed paraffin-embedded sections) analysis of human lung carcinoma tissue sections labeling ABCE1 with Purified ab185548 at 1:100 (11 µg/ml). Heat mediated antigen retrieval was performed using Heat mediated antigen retrieval using Bond™ Epitope Retrieval Solution 2 (pH 9.0) . Tissue was counterstained with Hematoxylin. Rabbit specific IHC polymer detection kit HRP/DAB (**ab209101**) secondary antibody was used at 1:0 dilution. PBS instead of the primary antibody was used as the negative control.



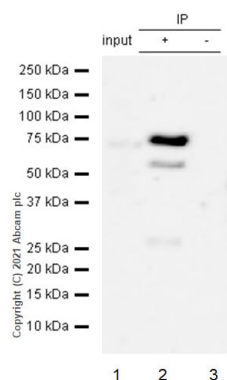
Immunocytochemistry/ Immunofluorescence - Anti-ABCE1 antibody [EPR15373(B)] - C-terminal (ab185548)

Immunocytochemistry analysis of K-562 (Human chronic myelogenous leukemia lymphoblast) cells labeling ABCE1 with Purified ab185548 at 1:100 dilution (10 µg/ml). Cells were fixed in 4% Paraformaldehyde and permeabilized with 0.1% tritonX-100. Cells were counterstained with Ab195889 Anti-alpha Tubulin antibody [DM1A]+H21:L21 - Microtubule Marker (Alexa Fluor® 594) 1:200 (2.5 µg/ml). Goat anti rabbit IgG (Alexa Fluor® 488, **ab150077**) was used as the secondary antibody at 1:1000 (2 µg/ml) dilution. DAPI (blue) was used as nuclear counterstain. PBS instead of the primary antibody was used as the secondary antibody only control.



Flow Cytometry (Intracellular) - Anti-ABCE1 antibody
[EPR15373(B)] - C-terminal (ab185548)

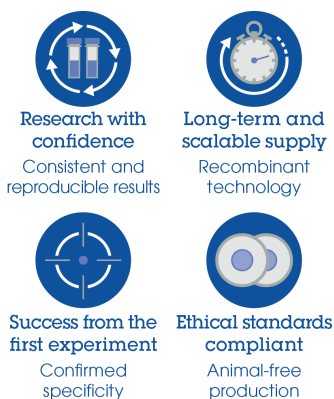
Flow Cytometry analysis of K-562 (Human chronic myelogenous leukemia lymphoblast) cells labelling ABCE1 with Purified ab185548 at 1:100 dilution (10 µg/ml) (Red). Cells were fixed with 4% Paraformaldehyde and permeabilised with 90% Methanol. A Goat anti rabbit IgG (Alexa Fluor® 488, **ab150081**) secondary antibody was used at 1:2000. Isotype control - Rabbit monoclonal IgG (Black). Unlabelled control - Cell without incubation with primary antibody and secondary antibody (Blue).



Immunoprecipitation - Anti-ABCE1 antibody
[EPR15373(B)] - C-terminal (ab185548)

Purified ab185548 at 1:60 dilution (2µg) immunoprecipitating ABCE1 in HEK-293 whole cell lysate.
Lane 1 (input): HEK-293 (Human embryonic kidney epithelial cell) whole cell lysate 10 µg.
Lane 2 (+): ab185548 + HEK-293 whole cell lysate.
Lane 3 (-): Rabbit monoclonal IgG (**ab172730**) instead of ab185548 in HEK-293 whole cell lysate.
VeriBlot for IP Detection Reagent (HRP)(**ab131366**) (1:1000 dilution) was used for Western blotting.
Blocking Buffer and concentration: 5% NFDm/TBST.
Diluting buffer and concentration: 5% NFDm/TBST.

Why choose a recombinant antibody?



Anti-ABCE1 antibody [EPR15373(B)] - C-terminal
(ab185548)

Please note: All products are "FOR RESEARCH USE ONLY. NOT FOR USE IN DIAGNOSTIC PROCEDURES"

Our Abpromise to you: Quality guaranteed and expert technical support

- Replacement or refund for products not performing as stated on the datasheet
- Valid for 12 months from date of delivery
- Response to your inquiry within 24 hours

- We provide support in Chinese, English, French, German, Japanese and Spanish
- Extensive multi-media technical resources to help you
- We investigate all quality concerns to ensure our products perform to the highest standards

If the product does not perform as described on this datasheet, we will offer a refund or replacement. For full details of the Abpromise, please visit <https://www.abcam.com/abpromise> or contact our technical team.

Terms and conditions

- Guarantee only valid for products bought direct from Abcam or one of our authorized distributors