

Product datasheet

Anti-ABCF1 antibody [ABC5H06] ab50976

★★★★★ [1 Abreviews](#) [1 References](#) [1 Image](#)

Overview

Product name	Anti-ABCF1 antibody [ABC5H06]
Description	Mouse monoclonal [ABC5H06] to ABCF1
Host species	Mouse
Tested applications	Suitable for: WB
Species reactivity	Reacts with: Human
Immunogen	Recombinant human ABCF1 fragment
General notes	<p>The Life Science industry has been in the grips of a reproducibility crisis for a number of years. Abcam is leading the way in addressing this with our range of recombinant monoclonal antibodies and knockout edited cell lines for gold-standard validation. Please check that this product meets your needs before purchasing.</p> <p>If you have any questions, special requirements or concerns, please send us an inquiry and/or contact our Support team ahead of purchase. Recommended alternatives for this product can be found below, along with publications, customer reviews and Q&As</p>

Properties

Form	Liquid
Storage instructions	Shipped at 4°C. Store at +4°C short term (1-2 weeks). Upon delivery aliquot. Store at -20°C long term.
Storage buffer	<p>pH: 7.4</p> <p>Preservative: 0.05% Sodium azide</p> <p>Constituents: 0.316% Tris HCl, 1% BSA, 1.16% Sodium chloride</p>
Purity	Tissue culture supernatant
Purification notes	Concentrated and dialyzed culture medium (protein free medium) of hybridoma
Clonality	Monoclonal
Clone number	ABC5H06
Isotype	IgG1

Applications

The Abpromise guarantee

Our **Abpromise guarantee** covers the use of ab50976 in the following tested applications.

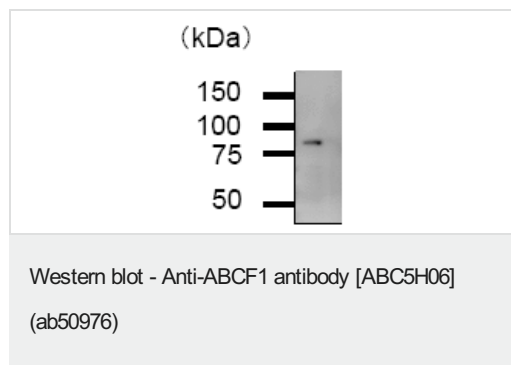
The application notes include recommended starting dilutions; optimal dilutions/concentrations should be determined by the end user.

Application	Abreviews	Notes
WB	★★★★★ (1)	1/100. Detects a band of approximately 85 kDa (predicted molecular weight: 96 kDa).

Target

Function	Isoform 2 is required for efficient Cap- and IRES-mediated mRNA translation initiation. Isoform 2 is not involved in the ribosome biogenesis.
Tissue specificity	Ubiquitous.
Sequence similarities	Belongs to the ABC transporter superfamily. ABCF family. EF3 subfamily. Contains 2 ABC transporter domains.
Post-translational modifications	Isoform 2 is phosphorylated at phosphoserine and phosphothreonine. Isoform 2 phosphorylation on Ser-109 and Ser-140 by CK2; inhibits association of EIF2 with ribosomes.
Cellular localization	Cytoplasm. Nucleus, nucleoplasm. Nucleus envelope.

Images



Anti-ABCF1 antibody [ABC5H06] (ab50976) at 1/100 dilution + RIPA lysate of HeLa cells at 500 µg

Secondary

Anti-mouse IgG at 1/1000 dilution

Developed using the ECL technique.

Predicted band size: 96 kDa

Observed band size: 85 kDa

Please note: All products are "FOR RESEARCH USE ONLY. NOT FOR USE IN DIAGNOSTIC PROCEDURES"

Our Abpromise to you: Quality guaranteed and expert technical support

- Replacement or refund for products not performing as stated on the datasheet
- Valid for 12 months from date of delivery
- Response to your inquiry within 24 hours
- We provide support in Chinese, English, French, German, Japanese and Spanish
- Extensive multi-media technical resources to help you

- We investigate all quality concerns to ensure our products perform to the highest standards

If the product does not perform as described on this datasheet, we will offer a refund or replacement. For full details of the Abpromise, please visit <https://www.abcam.com/abpromise> or contact our technical team.

Terms and conditions

- Guarantee only valid for products bought direct from Abcam or one of our authorized distributors