

## Product datasheet

### Anti-ABCF2 antibody [2001C1] ab50807

**KO** VALIDATED

2 Images

#### Overview

---

<b>Product name</b>	Anti-ABCF2 antibody [2001C1]
<b>Description</b>	Mouse monoclonal [2001C1] to ABCF2
<b>Host species</b>	Mouse
<b>Tested applications</b>	<b>Suitable for:</b> WB
<b>Species reactivity</b>	<b>Reacts with:</b> Human, Recombinant fragment
<b>Immunogen</b>	Recombinant full length protein corresponding to Human ABCF2. Database link: <a href="#">Q9UG63</a>
<b>Positive control</b>	WB: HEK293 and HeLa cell lysates; Recombinant ABCF2 fragment.
<b>General notes</b>	<p>The Life Science industry has been in the grips of a reproducibility crisis for a number of years. Abcam is leading the way in addressing this with our range of recombinant monoclonal antibodies and knockout edited cell lines for gold-standard validation. Please check that this product meets your needs before purchasing.</p> <p>If you have any questions, special requirements or concerns, please send us an inquiry and/or contact our Support team ahead of purchase. Recommended alternatives for this product can be found below, along with publications, customer reviews and Q&amp;As</p>

#### Properties

---

<b>Form</b>	Liquid
<b>Storage instructions</b>	Shipped at 4°C. Store at +4°C short term (1-2 weeks). Upon delivery aliquot. Store at -20°C long term.
<b>Storage buffer</b>	pH: 7.40 Preservative: 0.05% Sodium azide Constituents: 0.0225% Potassium chloride, 1% BSA, 0.03% Potassium phosphate, 0.812% Sodium chloride, 0.1312% Sodium phosphate
<b>Purity</b>	Protein G purified
<b>Purification notes</b>	ab50807 was purified using protein G column chromatography from culture supernatant of hybridoma cultured in a medium containing bovine IgG-depleted (approximately 95%) fetal bovine serum and filtered through a 0.22 µm membrane.

<b>Clonality</b>	Monoclonal
<b>Clone number</b>	2001C1
<b>Isotype</b>	IgG1

## Applications

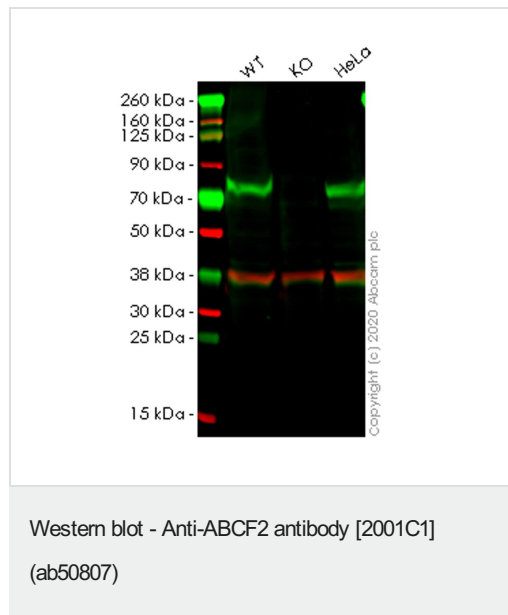
**The Abpromise guarantee** Our **Abpromise guarantee** covers the use of ab50807 in the following tested applications. The application notes include recommended starting dilutions; optimal dilutions/concentrations should be determined by the end user.

Application	Abreviews	Notes
<b>WB</b>		Use at an assay dependent concentration. Predicted molecular weight: 71 kDa.

## Target

**Relevance** ABCF 2 is a member of the ABC Transporter superfamily and of the GCN20 subfamily. As a member of the ABC Transporter family, it functions to transport various molecules across extra- and intracellular membranes.

## Images



**All lanes** : Anti-ABCF2 antibody [2001C1] (ab50807) at 1/500 dilution

**Lane 1** : Wild-type HEK-293T (Human epithelial cell line from embryonic kidney transformed with large T antigen) whole cell lysate

**Lane 2** : ABCF2 knockout HEK-293T (Human epithelial cell line from embryonic kidney transformed with large T antigen) whole cell lysate

**Lane 3** : HeLa (Human epithelial cell line from cervix adenocarcinoma) whole cell lysate

Lysates/proteins at 20 µg per lane.

### Secondary

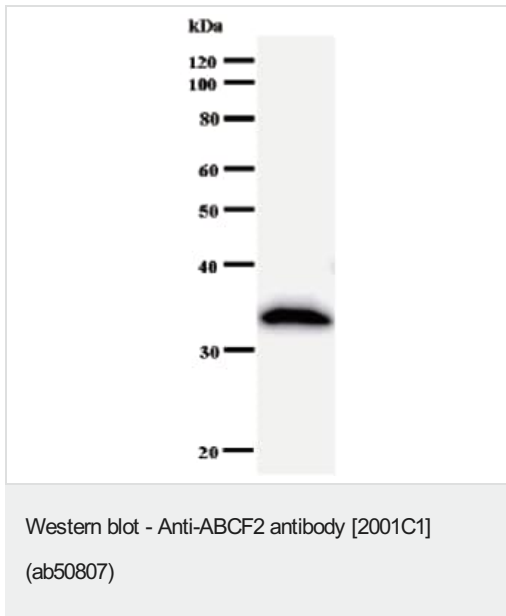
**All lanes** : Goat Anti-Rabbit IgG H&L (IRDye® 680RD) preadsorbed (**ab216777**) at 1/10000 dilution

**Predicted band size:** 71 kDa

**Observed band size:** 75 kDa

**Lanes 1-3:** Merged signal (red and green). Green - ab50807 observed at 75 kDa. Red - loading control **ab181602** observed at 36 kDa.

ab50807 Anti-ABCF2 antibody [2001C1] was shown to specifically react with ABCF2 in wild-type HEK-293T cells. Loss of signal was observed when knockout cell line **ab266516** (knockout cell lysate **ab258773**) was used. Wild-type and ABCF2 knockout samples were subjected to SDS-PAGE. ab50807 and Anti-GAPDH antibody[EPR16891] - Loading Control (**ab181602**) were incubated overnight at 4°C at 1 in 500 dilution and 1 in 20000 dilution respectively. Blots were developed with Goat anti-Rabbit IgG H&L (IRDye® 680RD) preadsorbed (**ab216777**) and Goat anti-Mouse IgG H&L (IRDye® 800CW) preadsorbed (**ab216772**) secondary antibodies at 1 in 20000 dilution for 1 hour at room temperature before imaging.



Anti-ABCF2 antibody [2001C1] (ab50807) + Recombinant ABCF2 fragment

**Predicted band size:** 71 kDa

**Observed band size:** 33 kDa

**Please note:** All products are "FOR RESEARCH USE ONLY. NOT FOR USE IN DIAGNOSTIC PROCEDURES"

### Our Abpromise to you: Quality guaranteed and expert technical support

- Replacement or refund for products not performing as stated on the datasheet
- Valid for 12 months from date of delivery
- Response to your inquiry within 24 hours
- We provide support in Chinese, English, French, German, Japanese and Spanish
- Extensive multi-media technical resources to help you
- We investigate all quality concerns to ensure our products perform to the highest standards

If the product does not perform as described on this datasheet, we will offer a refund or replacement. For full details of the Abpromise,

please visit <https://www.abcam.com/abpromise> or contact our technical team.

## **Terms and conditions**

---

- Guarantee only valid for products bought direct from Abcam or one of our authorized distributors