

## Product datasheet

### Anti-ABCG8 antibody ab223056

[2 References](#) [3 Images](#)

#### Overview

---

<b>Product name</b>	Anti-ABCG8 antibody
<b>Description</b>	Rabbit polyclonal to ABCG8
<b>Host species</b>	Rabbit
<b>Tested applications</b>	<b>Suitable for:</b> WB, IHC-P, ICC/IF
<b>Species reactivity</b>	<b>Reacts with:</b> Mouse, Human
<b>Immunogen</b>	Recombinant fragment corresponding to Human ABCG8 aa 176-413. Database link: <a href="#">Q9H221</a>
<b>Positive control</b>	WB: Mouse heart, lung, kidney and stomach lysates. IHC-P: Human lung tissue. ICC/IF: MCF7 cells.
<b>General notes</b>	<p>The Life Science industry has been in the grips of a reproducibility crisis for a number of years. Abcam is leading the way in addressing this with our range of recombinant monoclonal antibodies and knockout edited cell lines for gold-standard validation. Please check that this product meets your needs before purchasing.</p> <p>If you have any questions, special requirements or concerns, please send us an inquiry and/or contact our Support team ahead of purchase. Recommended alternatives for this product can be found below, along with publications, customer reviews and Q&amp;As</p>

#### Properties

---

<b>Form</b>	Liquid
<b>Storage instructions</b>	Shipped at 4°C. Store at +4°C short term (1-2 weeks). Upon delivery aliquot. Store at -20°C long term. Avoid freeze / thaw cycle.
<b>Storage buffer</b>	pH: 7.40 Preservative: 0.03% Proclin 300 Constituents: 50% Glycerol (glycerin, glycerine), PBS
<b>Purity</b>	Protein G purified
<b>Purification notes</b>	Purity >95%
<b>Clonality</b>	Polyclonal
<b>Isotype</b>	IgG

## Applications

---

**The Abpromise guarantee** Our **Abpromise guarantee** covers the use of ab223056 in the following tested applications. The application notes include recommended starting dilutions; optimal dilutions/concentrations should be determined by the end user.

Application	Abreviews	Notes
WB		1/2000 - 1/10000. Detects a band of approximately 76 kDa (predicted molecular weight: 76 kDa).
IHC-P		1/20 - 1/200.
ICC/IF		1/50 - 1/200.

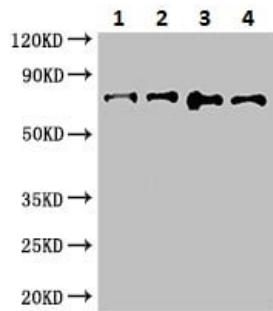
## Target

---

<b>Function</b>	Transporter that appears to play an indispensable role in the selective transport of the dietary cholesterol in and out of the enterocytes and in the selective sterol excretion by the liver into bile.
<b>Tissue specificity</b>	Strongly expressed in the liver, lower levels in the small intestine and colon. Detectable in a wide variety of human tissues.
<b>Involvement in disease</b>	<p>Genetic variations in ABCG8 can be associated with susceptibility to gallbladder disease type 4 (GBD4) [MIM:611465]. With an overall prevalence of 10-20%, gallstone disease (cholelithiasis) represents one of the most frequent and economically relevant health problems of industrialized countries.</p> <p>Defects in ABCG8 are a cause of sitosterolemia (STSL) [MIM:210250]; also known as phytosterolemia or shellfish sterolemia. It is a rare autosomal recessive disorder characterized by increased intestinal absorption of all sterols including cholesterol, plant and shellfish sterols, and decreased biliary excretion of dietary sterols into bile. Sitosterolemia patients have hypercholesterolemia, very high levels of plant sterols in the plasma, and frequently develop tendon and tuberous xanthomas, accelerated atherosclerosis and premature coronary artery disease.</p>
<b>Sequence similarities</b>	<p>Belongs to the ABC transporter superfamily. ABCG family. Eye pigment precursor importer (TC 3.A.1.204) subfamily.</p> <p>Contains 1 ABC transmembrane type-2 domain.</p> <p>Contains 1 ABC transporter domain.</p>
<b>Cellular localization</b>	Membrane.

## Images

---



Western blot - Anti-ABCG8 antibody (ab223056)

**All lanes :** Anti-ABCG8 antibody (ab223056) at 1/2000 dilution

**Lane 1 :** Mouse heart lysate

**Lane 2 :** Mouse lung lysate

**Lane 3 :** Mouse kidney lysate

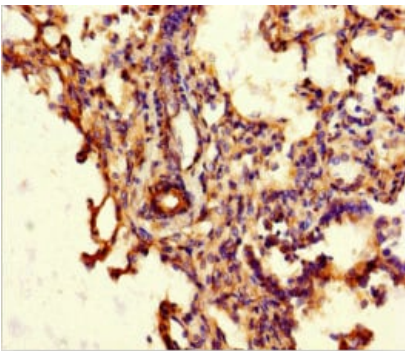
**Lane 4 :** Mouse stomach lysate

#### **Secondary**

**All lanes :** Goat Anti-Rabbit IgG at 1/50000 dilution

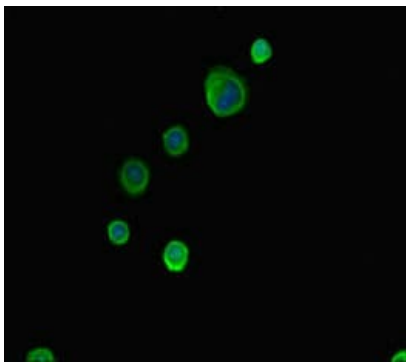
**Predicted band size:** 76 kDa

**Observed band size:** 76 kDa



Immunohistochemistry (Formalin/PFA-fixed paraffin-embedded sections) - Anti-ABCG8 antibody (ab223056)

Paraffin-embedded human lung tissue stained for ABCG8 using ab223056 at 1/100 dilution in immunohistochemical analysis.



Immunocytochemistry/ Immunofluorescence - Anti-ABCG8 antibody (ab223056)

MCF7 (human breast adenocarcinoma cell line) cells stained for ABCG8 (green) using ab223056 at 1/100 dilution in ICC/IF, followed by Alexa Fluor® 488-conjugated Goat Anti-Rabbit IgG(H+L).

**Please note:** All products are "FOR RESEARCH USE ONLY. NOT FOR USE IN DIAGNOSTIC PROCEDURES"

### Our Abpromise to you: Quality guaranteed and expert technical support

---

- Replacement or refund for products not performing as stated on the datasheet
- Valid for 12 months from date of delivery
- Response to your inquiry within 24 hours
- We provide support in Chinese, English, French, German, Japanese and Spanish
- Extensive multi-media technical resources to help you
- We investigate all quality concerns to ensure our products perform to the highest standards

If the product does not perform as described on this datasheet, we will offer a refund or replacement. For full details of the Abpromise, please visit <https://www.abcam.com/abpromise> or contact our technical team.

### Terms and conditions

---

- Guarantee only valid for products bought direct from Abcam or one of our authorized distributors