




## Product datasheet

### Anti-ABHD14B antibody ab235436

2 Images

#### Overview

<b>Product name</b>	Anti-ABHD14B antibody
<b>Description</b>	Rabbit polyclonal to ABHD14B
<b>Host species</b>	Rabbit
<b>Tested applications</b>	<b>Suitable for:</b> IHC-P, WB
<b>Species reactivity</b>	<b>Reacts with:</b> Mouse, Human <b>Predicted to work with:</b> Cow, Orangutan 
<b>Immunogen</b>	Recombinant full length protein corresponding to Human ABHD14B aa 1 to the C-terminus. Database link: <a href="#">Q96IU4</a>  <a href="#">Run BLAST with</a>  <a href="#">Run BLAST with</a>
<b>Positive control</b>	WB: Mouse small intestine, spleen, liver and lung lysates. IHC-P: Human liver tissue.
<b>General notes</b>	<p>The Life Science industry has been in the grips of a reproducibility crisis for a number of years. Abcam is leading the way in addressing this with our range of recombinant monoclonal antibodies and knockout edited cell lines for gold-standard validation. Please check that this product meets your needs before purchasing.</p> <p>If you have any questions, special requirements or concerns, please send us an inquiry and/or contact our Support team ahead of purchase. Recommended alternatives for this product can be found below, along with publications, customer reviews and Q&amp;As</p>

#### Properties

<b>Form</b>	Liquid
<b>Storage instructions</b>	Shipped at 4°C. Store at +4°C short term (1-2 weeks). Upon delivery aliquot. Store at -20°C long term. Avoid freeze / thaw cycle.
<b>Storage buffer</b>	pH: 7.40 Preservative: 0.03% Proclin 300 Constituents: 50% Glycerol (glycerin, glycerine), PBS
<b>Purity</b>	Protein G purified
<b>Purification notes</b>	Purity >95%.
<b>Clonality</b>	Polyclonal
<b>Isotype</b>	IgG

## Applications

### The Abpromise guarantee

Our **Abpromise guarantee** covers the use of ab235436 in the following tested applications.

The application notes include recommended starting dilutions; optimal dilutions/concentrations should be determined by the end user.

Application	Abreviews	Notes
IHC-P		1/20 - 1/200.
WB		1/500 - 1/2000. Predicted molecular weight: 22 kDa.

## Target

### Function

Has hydrolase activity towards p-nitrophenyl butyrate (in vitro). May activate transcription.

### Tissue specificity

Ubiquitous. Detected in spleen, thymus, prostate, testis, ovary, small intestine, colon, peripheral blood leukocyte, heart, placenta, lung, liver, skeletal muscle, pancreas and kidney.

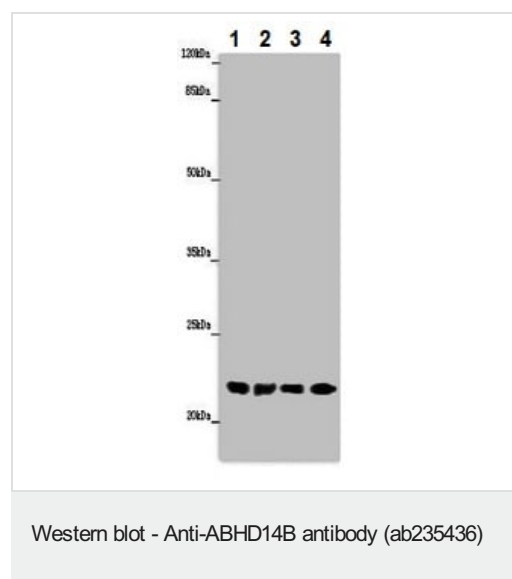
### Sequence similarities

Belongs to the AB hydrolase superfamily. ABHD14 family.

### Cellular localization

Cytoplasm. Nucleus. Predominantly cytoplasmic.

## Images



**All lanes** : Anti-ABHD14B antibody (ab235436) at 1/500 dilution

**Lane 1** : Mouse small intestine lysate

**Lane 2** : Mouse spleen lysate

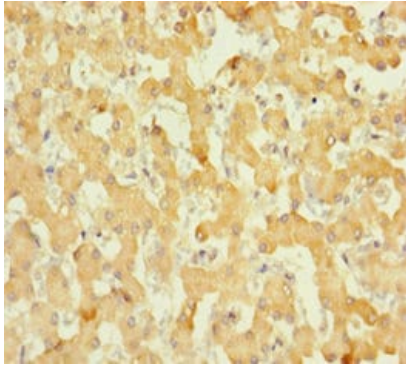
**Lane 3** : Mouse liver lysate

**Lane 4** : Mouse lung lysate

### Secondary

**All lanes** : Goat polyclonal to rabbit IgG at 1/10000 dilution

**Predicted band size:** 22 kDa



Paraffin-embedded human liver tissue stained for ABHD14B using ab235436 at 1/100 dilution in immunohistochemical analysis.

Immunohistochemistry (Formalin/PFA-fixed paraffin-embedded sections) - Anti-ABHD14B antibody (ab235436)

**Please note:** All products are "FOR RESEARCH USE ONLY. NOT FOR USE IN DIAGNOSTIC PROCEDURES"

#### Our Abpromise to you: Quality guaranteed and expert technical support

---

- Replacement or refund for products not performing as stated on the datasheet
- Valid for 12 months from date of delivery
- Response to your inquiry within 24 hours
- We provide support in Chinese, English, French, German, Japanese and Spanish
- Extensive multi-media technical resources to help you
- We investigate all quality concerns to ensure our products perform to the highest standards

If the product does not perform as described on this datasheet, we will offer a refund or replacement. For full details of the Abpromise, please visit <https://www.abcam.com/abpromise> or contact our technical team.

#### Terms and conditions

---

- Guarantee only valid for products bought direct from Abcam or one of our authorized distributors