


## Product datasheet

### Anti-ABHD6 antibody ab74681

★ ★ ★ ★ ★ [2 Abreviews](#) [1 References](#) [2 Images](#)

#### Overview

<b>Product name</b>	Anti-ABHD6 antibody
<b>Description</b>	Rabbit polyclonal to ABHD6
<b>Host species</b>	Rabbit
<b>Tested applications</b>	<b>Suitable for:</b> WB, ICC/IF
<b>Species reactivity</b>	<b>Reacts with:</b> Human <b>Predicted to work with:</b> Mouse, Rat 
<b>Immunogen</b>	Synthetic peptide corresponding to Human ABHD6 (internal sequence). Database link: <a href="#">Q9BV23</a>
<b>Positive control</b>	COLO cell extracts and A549 cells.
<b>General notes</b>	<p>The Life Science industry has been in the grips of a reproducibility crisis for a number of years. Abcam is leading the way in addressing this with our range of recombinant monoclonal antibodies and knockout edited cell lines for gold-standard validation. Please check that this product meets your needs before purchasing.</p> <p>If you have any questions, special requirements or concerns, please send us an inquiry and/or contact our Support team ahead of purchase. Recommended alternatives for this product can be found below, along with publications, customer reviews and Q&amp;As</p>

#### Properties

<b>Form</b>	Liquid
<b>Storage instructions</b>	Shipped at 4°C. Upon delivery aliquot and store at -20°C. Avoid repeated freeze / thaw cycles.
<b>Storage buffer</b>	pH: 7.40 Preservative: 0.02% Sodium azide Constituents: 50% Glycerol (glycerin, glycerine), 0.87% Sodium chloride, PBS
	Without Mg <sup>2+</sup> and Ca <sup>2+</sup>
<b>Purity</b>	Immunogen affinity purified
<b>Clonality</b>	Polyclonal
<b>Isotype</b>	IgG

## Applications

### The Abpromise guarantee

Our **Abpromise guarantee** covers the use of ab74681 in the following tested applications.

The application notes include recommended starting dilutions; optimal dilutions/concentrations should be determined by the end user.

Application	Abreviews	Notes
WB		1/500 - 1/1000. Detects a band of approximately 39 kDa (predicted molecular weight: 39 kDa).
ICC/IF		1/500 - 1/1000.

## Target

### Relevance

ABHD6 belongs to the alpha/beta hydrolase superfamily. It is highly expressed in mammalian brain and catalyzes the hydrolysis of the endocannabinoid 2-arachidonoyl glycerol (2-AG).

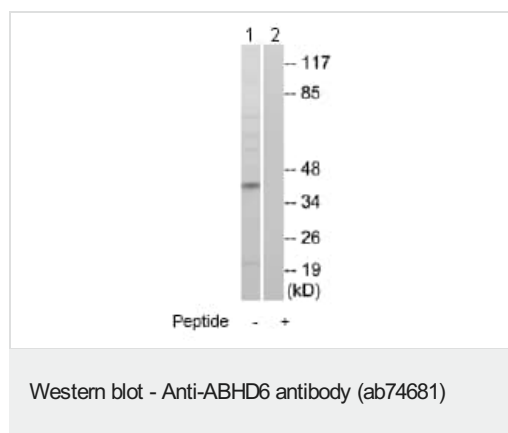
### Cellular localization

Membrane; Single-pass type II membrane protein

## Images



ab74681 at 1/500-1/1000 dilution staining ABHD6 in A549 cells by Immunofluorescence, in the absence (-) or presence (+) of the immunising peptide.



**All lanes :** Anti-ABHD6 antibody (ab74681) at 1/500 dilution

**Lane 1 :** COLO cell extracts

**Lane 2 :** COLO cell extracts with immunising peptide at 10 µg

Lysates/proteins at 30 µg per lane.

**Predicted band size:** 39 kDa

**Observed band size:** 39 kDa

**Please note:** All products are "FOR RESEARCH USE ONLY. NOT FOR USE IN DIAGNOSTIC PROCEDURES"

### **Our Abpromise to you: Quality guaranteed and expert technical support**

---

- Replacement or refund for products not performing as stated on the datasheet
- Valid for 12 months from date of delivery
- Response to your inquiry within 24 hours
  
- We provide support in Chinese, English, French, German, Japanese and Spanish
- Extensive multi-media technical resources to help you
- We investigate all quality concerns to ensure our products perform to the highest standards

If the product does not perform as described on this datasheet, we will offer a refund or replacement. For full details of the Abpromise, please visit <https://www.abcam.com/abpromise> or contact our technical team.

### **Terms and conditions**

---

- Guarantee only valid for products bought direct from Abcam or one of our authorized distributors