


## Product datasheet

### Anti-Abi-1 antibody ab72318

4 Images

#### Overview

<b>Product name</b>	Anti-Abi-1 antibody
<b>Description</b>	Rabbit polyclonal to Abi-1
<b>Host species</b>	Rabbit
<b>Tested applications</b>	<b>Suitable for:</b> IHC-P, WB, IP
<b>Species reactivity</b>	<b>Reacts with:</b> Human <b>Predicted to work with:</b> Mouse, Rat, Rabbit, Horse, Chicken, Guinea pig, Turkey, Pig, Chimpanzee, Rhesus monkey, Gorilla, Orangutan, Platypus 
<b>Immunogen</b>	Synthetic peptide within Human Abi-1 aa 325-375. The exact sequence is proprietary. Database link: <a href="#">NP_005461.2</a>
<b>Positive control</b>	Whole cell lysates from HeLa and 293T cells.
<b>General notes</b>	<p>The Life Science industry has been in the grips of a reproducibility crisis for a number of years. Abcam is leading the way in addressing this with our range of recombinant monoclonal antibodies and knockout edited cell lines for gold-standard validation. Please check that this product meets your needs before purchasing.</p> <p>If you have any questions, special requirements or concerns, please send us an inquiry and/or contact our Support team ahead of purchase. Recommended alternatives for this product can be found below, along with publications, customer reviews and Q&amp;As</p>

#### Properties

<b>Form</b>	Liquid
<b>Storage instructions</b>	Shipped at 4°C. Upon delivery aliquot and store at -20°C. Avoid freeze / thaw cycles.
<b>Storage buffer</b>	pH: 6.8 Preservative: 0.09% Sodium azide Constituents: 0.1% BSA, Tris buffered saline
<b>Purity</b>	Immunogen affinity purified
<b>Clonality</b>	Polyclonal
<b>Isotype</b>	IgG

#### Applications

## The Abpromise guarantee

Our **Abpromise guarantee** covers the use of ab72318 in the following tested applications.

The application notes include recommended starting dilutions; optimal dilutions/concentrations should be determined by the end user.

Application	Abreviews	Notes
IHC-P		1/100 - 1/500. Perform heat mediated antigen retrieval with citrate buffer pH 6 before commencing with IHC staining protocol.
WB		1/2000 - 1/10000. Detects a band of approximately 55, 60 kDa (predicted molecular weight: 55 kDa).
IP		Use at 2-5 µg/mg of lysate.

## Target

### Function

May act in negative regulation of cell growth and transformation by interacting with nonreceptor tyrosine kinases ABL1 and/or ABL2. May play a role in regulation of EGF-induced Erk pathway activation. Involved in cytoskeletal reorganization and EGFR signaling. Together with EPS8 participates in transduction of signals from Ras to Rac. In vitro, a trimeric complex of ABI1, EPS8 and SOS1 exhibits Rac specific guanine nucleotide exchange factor (GEF) activity and ABI1 seems to act as an adapter in the complex. Regulates ABL1/c-Abl-mediated phosphorylation of ENAH. Recruits WASF1 to lamellipodia and there seems to regulate WASF1 protein level.

### Tissue specificity

Widely expressed, with highest expression in brain.

### Involvement in disease

Note=A chromosomal aberration involving ABI1 is a cause of acute leukemias. Translocation t(10;11)(p11.2;q23) with MLL. ABI1 isoform 2 was found to be present in acute leukemia MLL-ABI1 fusion transcript.

### Sequence similarities

Belongs to the ABI family.  
Contains 1 SH3 domain.  
Contains 1 t-SNARE coiled-coil homology domain.

### Domain

The t-SNARE coiled-coil homology domain is necessary and sufficient for interaction with STX1A.

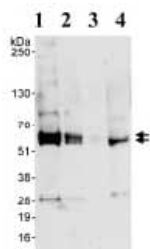
### Post-translational modifications

In vitro substrate for v-Abl (By similarity). Phosphorylated on tyrosine residues after serum stimulation or induction by v-Abl.

### Cellular localization

Cytoplasm. Nucleus. Cell projection > lamellipodium. Cell projection > filopodium. Cell projection > growth cone. Cell junction > synapse > synaptosome. Cytoplasm > cytoskeleton. Localized to protruding lamellipodia and filopodia tips. Also localized to neuronal growth cones and synaptosomes.

## Images



Western blot - Anti-Abi-1 antibody (ab72318)

**All lanes :** Anti-Abi-1 antibody (ab72318) at 0.04 µg/ml

**Lane 1 :** Whole cell lysate from HeLa cells at 50 µg

**Lane 2 :** Whole cell lysate from HeLa cells at 15 µg

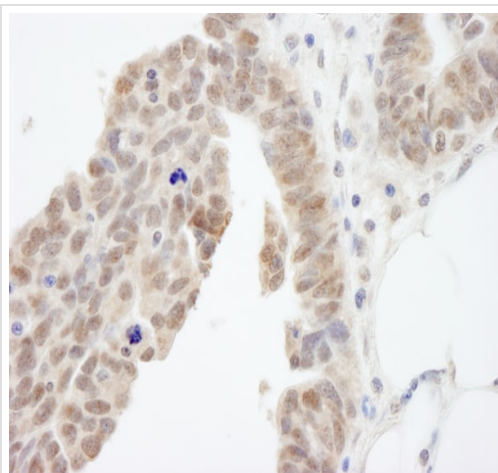
**Lane 3 :** Whole cell lysate from HeLa cells at 5 µg

**Lane 4 :** Whole cell lysate from 293T cells at 50 µg

**Predicted band size:** 55 kDa

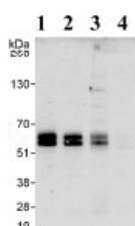
**Observed band size:** 55,60 kDa

**Additional bands at:** 28 kDa, 90 kDa. We are unsure as to the identity of these extra bands.



Immunohistochemistry (Formalin/PFA-fixed paraffin-embedded sections) - Anti-Abi-1 antibody (ab72318)

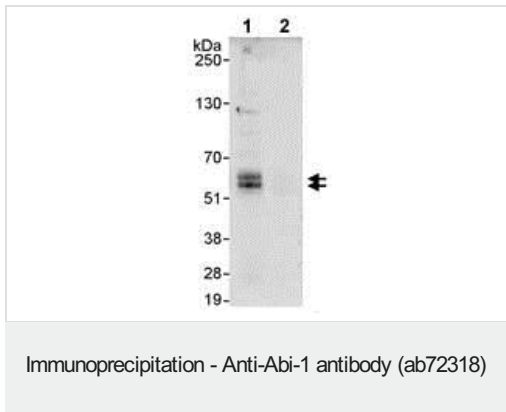
Immunohistochemistry (Formalin/PFA-fixed paraffin-embedded sections) analysis of human prostate carcinoma tissue labelling Abi-1 with ab72318 at 1/200 (1µg/ml). Detection: DAB.



Immunoprecipitation - Anti-Abi-1 antibody (ab72318)

Detection of Human Abi-1 by Western Blot of Immunoprecipitates.

Samples: Whole cell lysate (1 mg for IP, 20% of IP loaded) from HeLa cells. Lane 1: **ab72317** used for IP at 3 µg/mg lysate. Lane 2: Abi-1 immunoprecipitated with an other antibody. Lane 3: ab72318 at 3 µg/mg lysate used for IP of Abi-1, which recognize downstream epitopes. Lane 4: control Ig IP For blotting immunoprecipitated Abi-1, ab72318 was used at 1 µg/ml.



Detection of Abi-1 by Immunoprecipitation from Whole cell lysate from HeLa cells (1 mg for IP, 20% of IP loaded) using ab72318 at 3 µg/mg lysate for IP (Lane 1) and at 1 µg/ml for subsequent WB detection. Lane 2 represents control IgG IP.

**Please note:** All products are "FOR RESEARCH USE ONLY. NOT FOR USE IN DIAGNOSTIC PROCEDURES"

#### Our Abpromise to you: Quality guaranteed and expert technical support

- Replacement or refund for products not performing as stated on the datasheet
- Valid for 12 months from date of delivery
- Response to your inquiry within 24 hours
- We provide support in Chinese, English, French, German, Japanese and Spanish
- Extensive multi-media technical resources to help you
- We investigate all quality concerns to ensure our products perform to the highest standards

If the product does not perform as described on this datasheet, we will offer a refund or replacement. For full details of the Abpromise, please visit <https://www.abcam.com/abpromise> or contact our technical team.

#### Terms and conditions

- Guarantee only valid for products bought direct from Abcam or one of our authorized distributors