

Product datasheet

Anti-Abi-1 (phospho Y435) antibody [EP3954] ab109395

Recombinant RabMAb

2 Images

Overview

Product name	Anti-Abi-1 (phospho Y435) antibody [EP3954]
Description	Rabbit monoclonal [EP3954] to Abi-1 (phospho Y435)
Host species	Rabbit
Tested applications	Suitable for: WB Unsuitable for: IHC-P
Species reactivity	Reacts with: Human
Immunogen	Synthetic peptide. This information is proprietary to Abcam and/or its suppliers.
Positive control	Jurkat cell lysate treated with pervanadate.
General notes	<p>This product is a recombinant monoclonal antibody, which offers several advantages including:</p> <ul style="list-style-type: none"> - High batch-to-batch consistency and reproducibility - Improved sensitivity and specificity - Long-term security of supply - Animal-free production <p>For more information see here.</p> <p>Our RabMAb[®] technology is a patented hybridoma-based technology for making rabbit monoclonal antibodies. For details on our patents, please refer to RabMAb[®] patents.</p> <p>Mouse, Rat: We have preliminary internal testing data to indicate this antibody may not react with these species. Please contact us for more information.</p>

Properties

Form	Liquid
Storage instructions	Shipped at 4°C. Store at -20°C. Stable for 12 months at -20°C.
Storage buffer	<p>pH: 7.20</p> <p>Preservative: 0.05% Sodium azide</p> <p>Constituents: 0.1% BSA, 40% Glycerol (glycerin, glycerine), 9.85% Tris glycine, 50% Tissue culture supernatant</p>
Purity	Protein A purified
Clonality	Monoclonal

Clone number	EP3954
Isotype	IgG

Applications

The Abpromise guarantee Our **Abpromise guarantee** covers the use of ab109395 in the following tested applications. The application notes include recommended starting dilutions; optimal dilutions/concentrations should be determined by the end user.

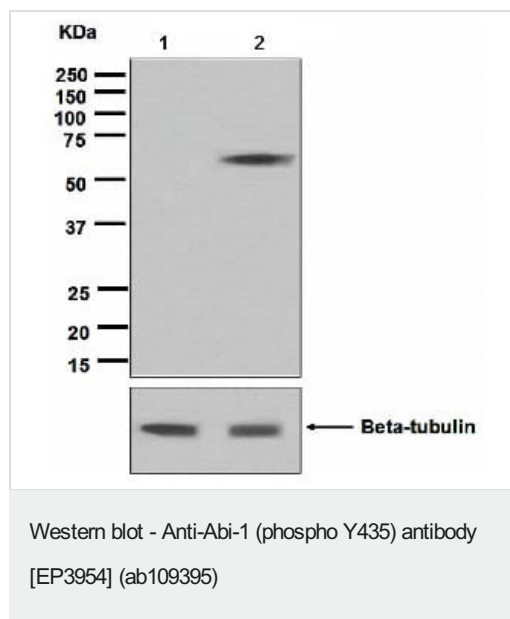
Application	Abreviews	Notes
WB		1/10000 - 1/50000. Predicted molecular weight: 55 kDa.

Application notes Is unsuitable for IHC-P.

Target

Function	May act in negative regulation of cell growth and transformation by interacting with nonreceptor tyrosine kinases ABL1 and/or ABL2. May play a role in regulation of EGF-induced Erk pathway activation. Involved in cytoskeletal reorganization and EGFR signaling. Together with EPS8 participates in transduction of signals from Ras to Rac. In vitro, a trimeric complex of ABI1, EPS8 and SOS1 exhibits Rac specific guanine nucleotide exchange factor (GEF) activity and ABI1 seems to act as an adapter in the complex. Regulates ABL1/c-Abl-mediated phosphorylation of ENAH. Recruits WASF1 to lamellipodia and there seems to regulate WASF1 protein level.
Tissue specificity	Widely expressed, with highest expression in brain.
Involvement in disease	Note=A chromosomal aberration involving ABI1 is a cause of acute leukemias. Translocation t(10;11)(p11.2;q23) with MLL. ABI1 isoform 2 was found to be present in acute leukemia MLL-ABI1 fusion transcript.
Sequence similarities	Belongs to the ABI family. Contains 1 SH3 domain. Contains 1 t-SNARE coiled-coil homology domain.
Domain	The t-SNARE coiled-coil homology domain is necessary and sufficient for interaction with STX1A.
Post-translational modifications	In vitro substrate for v-Abl (By similarity). Phosphorylated on tyrosine residues after serum stimulation or induction by v-Abl.
Cellular localization	Cytoplasm. Nucleus. Cell projection > lamellipodium. Cell projection > filopodium. Cell projection > growth cone. Cell junction > synapse > synaptosome. Cytoplasm > cytoskeleton. Localized to protruding lamellipodia and filopodia tips. Also localized to neuronal growth cones and synaptosomes.

Images



All lanes : Anti-Abi-1 (phospho Y435) antibody [EP3954] (ab109395) at 1/10000 dilution

Lane 1 : Jurkat cell lysate, untreated

Lane 2 : Jurkat cell lysate, treated with pervanadate

Lysates/proteins at 10 µg per lane.

Predicted band size: 55 kDa

Why choose a recombinant antibody?

<p>Research with confidence Consistent and reproducible results</p>	<p>Long-term and scalable supply Recombinant technology</p>
<p>Success from the first experiment Confirmed specificity</p>	<p>Ethical standards compliant Animal-free production</p>

Anti-Abi-1 (phospho Y435) antibody [EP3954] (ab109395)

Please note: All products are "FOR RESEARCH USE ONLY. NOT FOR USE IN DIAGNOSTIC PROCEDURES"

Our Abpromise to you: Quality guaranteed and expert technical support

- Replacement or refund for products not performing as stated on the datasheet
- Valid for 12 months from date of delivery
- Response to your inquiry within 24 hours
- We provide support in Chinese, English, French, German, Japanese and Spanish

- Extensive multi-media technical resources to help you
- We investigate all quality concerns to ensure our products perform to the highest standards

If the product does not perform as described on this datasheet, we will offer a refund or replacement. For full details of the Abpromise, please visit <https://www.abcam.com/abpromise> or contact our technical team.

Terms and conditions

- Guarantee only valid for products bought direct from Abcam or one of our authorized distributors