

## Product datasheet

### Anti-ACF1 / BAZ1A antibody [EPR15826] - BSA and Azide free ab250942

KO VALIDATED Recombinant RabMAb

2 Images

#### Overview

Product name	Anti-ACF1 / BAZ1A antibody [EPR15826] - BSA and Azide free
Description	Rabbit monoclonal [EPR15826] to ACF1 / BAZ1A - BSA and Azide free
Host species	Rabbit
Tested applications	<b>Suitable for:</b> IHC-P, ICC/IF, WB
Species reactivity	<b>Reacts with:</b> Human
Immunogen	Synthetic peptide. This information is proprietary to Abcam and/or its suppliers.
Positive control	WB: HeLa, Jurkat and Daudi cell lysates.
General notes	<p>ab250942 is the carrier-free version of <a href="#">ab187670</a>.</p> <p>Our <b>carrier-free</b> antibodies are typically supplied in a PBS-only formulation, purified and free of BSA, sodium azide and glycerol. The carrier-free buffer and high concentration allow for increased conjugation efficiency.</p> <p>This conjugation-ready format is designed for use with fluorochromes, metal isotopes, oligonucleotides, and enzymes, which makes them ideal for antibody labelling, functional and cell-based assays, flow-based assays (e.g. mass cytometry) and Multiplex Imaging applications.</p> <p>Use our <b>conjugation kits</b> for antibody conjugates that are ready-to-use in as little as 20 minutes with &lt;1 minute hands-on-time and 100% antibody recovery: available for fluorescent dyes, HRP, biotin and gold.</p> <p>This product is compatible with the Maxpar<sup>®</sup> Antibody Labeling Kit from Fluidigm, without the need for antibody preparation. Maxpar<sup>®</sup> is a trademark of Fluidigm Canada Inc.</p> <p>This product is a recombinant monoclonal antibody, which offers several advantages including:</p> <ul style="list-style-type: none"> <li>- High batch-to-batch consistency and reproducibility</li> <li>- Improved sensitivity and specificity</li> <li>- Long-term security of supply</li> <li>- Animal-free production</li> </ul> <p>For more information <a href="#">see here</a>.</p> <p>Our RabMAb<sup>®</sup> technology is a patented hybridoma-based technology for making rabbit monoclonal antibodies. For details on our patents, please refer to <a href="#">RabMAb<sup>®</sup> patents</a>.</p>

## Properties

Form	Liquid
Storage instructions	Shipped at 4°C. Store at +4°C. Do Not Freeze.
Storage buffer	pH: 7.2 Constituent: PBS
Carrier free	Yes
Clonality	Monoclonal
Clone number	EPR15826
Isotype	IgG

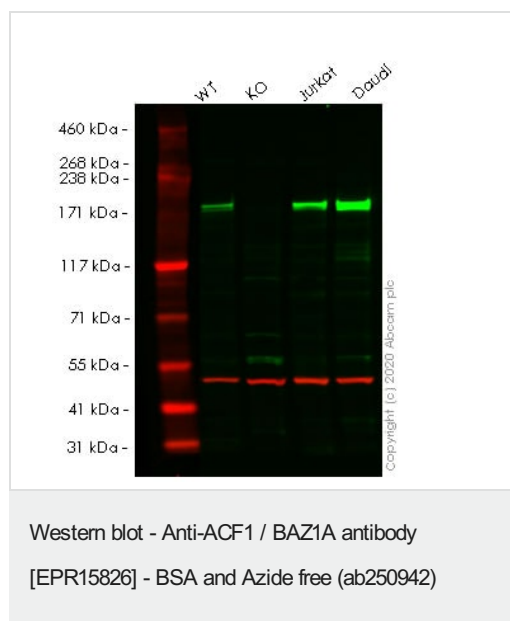
## Applications

**The Abpromise guarantee** Our **Abpromise guarantee** covers the use of ab250942 in the following tested applications. The application notes include recommended starting dilutions; optimal dilutions/concentrations should be determined by the end user.

Application	Abreviews	Notes
IHC-P		Use at an assay dependent concentration. Perform heat mediated antigen retrieval with Tris/EDTA buffer pH 9.0 before commencing with IHC staining protocol.
ICC/IF		Use at an assay dependent concentration.
WB		Use at an assay dependent concentration. Detects a band of approximately 203 kDa (predicted molecular weight: 178 kDa).

## Target

Function	<p>Component of the ACF complex, an ATP-dependent chromatin remodeling complex, that regulates spacing of nucleosomes using ATP to generate evenly spaced nucleosomes along the chromatin. The ATPase activity of the complex is regulated by the length of flanking DNA. Also involved in facilitating the DNA replication process. BAZ1A is the accessory, non-catalytic subunit of the complex which can enhance and direct the process provided by the ATPase subunit, SMARCA5, probably through targeting pericentromeric heterochromatin in late S phase. Moves end-positioned nucleosomes to a predominantly central position. May have a role in nuclear receptor-mediated transcription repression.</p> <p>Component of the histone-fold protein complex CHRAC complex which facilitates nucleosome sliding by the ACF complex and enhances ACF-mediated chromatin assembly. The C-terminal regions of both CHRAC1 and POLE1 are required for these functions.</p>
Tissue specificity	Highly expressed in testis and at low or undetectable levels in other tissues analyzed.
Sequence similarities	<p>Belongs to the WAL family.</p> <p>Contains 1 bromo domain.</p> <p>Contains 1 DDT domain.</p> <p>Contains 1 PHD-type zinc finger.</p> <p>Contains 1 WAC domain.</p>
Cellular localization	Nucleus. May target the CHRAC complex to heterochromatin.



**All lanes :** Anti-ACF1 / BAZ1A antibody [EPR15826] - C-terminal ([ab187670](#)) at 1/10000 dilution

**Lane 1 :** Wild-type HeLa cell lysate

**Lane 2 :** BAZ1A knockout HeLa cell lysate

**Lane 3 :** Jurkat cell lysate

**Lane 4 :** Daudi cell lysate

Lysates/proteins at 20 µg per lane.

Performed under reducing conditions.

**Predicted band size:** 178 kDa

This data was developed using the same antibody clone in a different buffer formulation ([ab187670](#)).

**Lanes 1-4:** Merged signal (red and green). Green - [ab187670](#) observed at 178 kDa. Red - loading control [ab7291](#) observed at 50 kDa.

[ab187670](#) Anti-BAZ1A antibody [EPR15826] - C-terminal was shown to specifically react with BAZ1A in wild-type HeLa cells. Loss of signal was observed when knockout cell line [ab264925](#) (knockout cell lysate [ab257856](#)) was used. Wild-type and BAZ1A knockout samples were subjected to SDS-PAGE. [ab187670](#) and Anti-alpha Tubulin antibody [DM1A] - Loading Control ([ab7291](#)) were incubated overnight at 4°C at 1 in 10000 dilution and 1 in 20000 dilution respectively. Blots were developed with Goat anti-Rabbit IgG H&L (IRDye® 800CW) preadsorbed ([ab216773](#)) and Goat anti-Mouse IgG H&L (IRDye® 680RD) preadsorbed ([ab216776](#)) secondary antibodies at 1 in 20000 dilution for 1 hour at room temperature before imaging.

### Why choose a recombinant antibody?



**Research with confidence**  
Consistent and reproducible results



**Long-term and scalable supply**  
Recombinant technology



**Success from the first experiment**  
Confirmed specificity



**Ethical standards compliant**  
Animal-free production

Anti-ACF1 / BAZ1A antibody [EPR15826] - BSA and Azide free (ab250942)

**Please note:** All products are "FOR RESEARCH USE ONLY. NOT FOR USE IN DIAGNOSTIC PROCEDURES"

### Our Abpromise to you: Quality guaranteed and expert technical support

---

- Replacement or refund for products not performing as stated on the datasheet
- Valid for 12 months from date of delivery
- Response to your inquiry within 24 hours
- We provide support in Chinese, English, French, German, Japanese and Spanish
- Extensive multi-media technical resources to help you
- We investigate all quality concerns to ensure our products perform to the highest standards

If the product does not perform as described on this datasheet, we will offer a refund or replacement. For full details of the Abpromise, please visit <https://www.abcam.com/abpromise> or contact our technical team.

### Terms and conditions

---

- Guarantee only valid for products bought direct from Abcam or one of our authorized distributors