


Product datasheet

Anti-ACTH antibody [57] - N-terminal- BSA and Azide free ab212736

Recombinant

6 Images

Overview

Product name	Anti-ACTH antibody [57] - N-terminal- BSA and Azide free
Description	Mouse monoclonal [57] to ACTH - N-terminal – BSA and Azide free
Host species	Mouse
Tested applications	Suitable for: IHC-P, mIHC
Species reactivity	<p>Reacts with: Mouse, Rat, Human</p> <p>Predicted to work with: Sheep, Guinea pig, Cow, a wide range of other species, Macaque monkey </p>
Immunogen	<p>Synthetic peptide corresponding to Human ACTH (N terminal) conjugated to keyhole limpet haemocyanin.</p> <p>Database link: P01189</p>
Positive control	IHC: Human, mouse, rat pituitary gland tissues. mIHC: Human pituitary gland.
General notes	<p>This product was switched from a hybridoma to recombinant production format on 25th November 2021.</p> <p>Our carrier-free antibodies are typically supplied in a PBS-only formulation, purified and free of BSA, sodium azide and glycerol. The carrier-free buffer and high concentration allow for increased conjugation efficiency.</p> <p>This conjugation-ready format is designed for use with fluorochromes, metal isotopes, oligonucleotides, and enzymes, which makes them ideal for antibody labelling, functional and cell-based assays, flow-based assays (e.g. mass cytometry) and Multiplex Imaging applications.</p> <p>Use our conjugation kits for antibody conjugates that are ready-to-use in as little as 20 minutes with <1 minute hands-on-time and 100% antibody recovery: available for fluorescent dyes, HRP, biotin and gold.</p> <p>This product is a recombinant monoclonal antibody, which offers several advantages including:</p> <ul style="list-style-type: none"> - High batch-to-batch consistency and reproducibility - Improved sensitivity and specificity - Long-term security of supply - Animal-free production <p>For more information see here.</p>

Properties

Form	Liquid
Storage instructions	Shipped at 4°C. Store at +4°C. Do Not Freeze.
Storage buffer	pH: 7.20 Constituent: 100% PBS
Carrier free	Yes
Purity	Protein A purified
Clonality	Monoclonal
Clone number	57
Isotype	IgG1
Light chain type	kappa

Applications

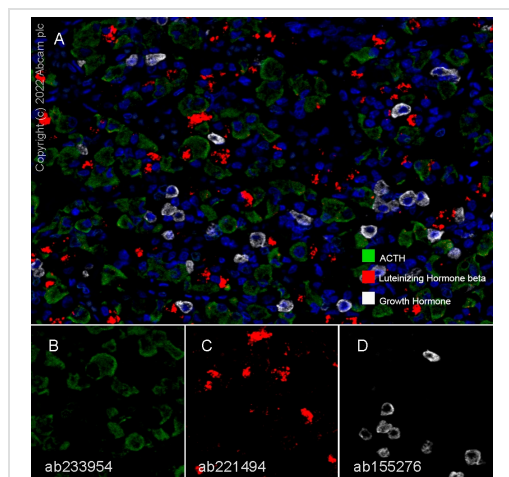
The Abpromise guarantee Our **Abpromise guarantee** covers the use of ab212736 in the following tested applications. The application notes include recommended starting dilutions; optimal dilutions/concentrations should be determined by the end user.

Application	Abreviews	Notes
IHC-P		1/5000 - 1/20000. Perform heat mediated antigen retrieval with citrate buffer pH 6 before commencing with IHC staining protocol. Recommend 1:5000 for human species and 1:20, 000 for mouse and rat species
mlHC		Use at an assay dependent concentration.

Target

Relevance	ACTH occurs in cells of the anterior pituitary and in neurons in brain. It regulates the corticosteroid production in the adrenal cortex. Beta endorphin and Met enkephalin are endogenous opiates. MSH (melanocyte stimulating hormone) increases the pigmentation of skin by increasing melanin production in melanocytes.
Cellular localization	Secreted

Images



Multiplex immunohistochemistry - Anti-ACTH antibody [57] - N-terminal- BSA and Azide free (ab212736)

This data was developed using **ab233954**, the same antibody clone in a different buffer formulation.

Immunohistochemistry (Formalin/PFA-fixed paraffin-embedded sections) analysis of Human pituitary gland labelling ACTH with **ab233954** at 1/5000 dilution (0.214 µg/ml) (B), Luteinizing Hormone beta with **ab221494** at 1/4000 dilution (0.258 µg/ml) (C) and Growth Hormone with **ab155276** at 1/5000 dilution (0.044 µg/ml) (D). Opal Polymer HRP Ms + Rb was used as a secondary antibody, and DAPI was used for a nuclear counter stain. Heat mediated antigen retrieval with Tris-EDTA buffer (pH 9.0, epitope retrieval solution2) for 20 mins.

Panel A: merged staining of anti-Growth Hormone (gray; Opal™690), anti-ACTH (green; Opal™520) and anti-Luteinizing Hormone beta (red; Opal™570) on human pituitary gland.

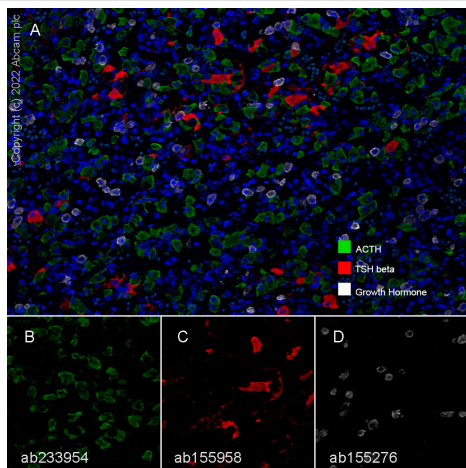
Panel B: anti-ACTH stained on corticotrophs.

Panel C: anti-Luteinizing Hormone beta stained on gonadotrophs.

Panel D: anti-Growth Hormone stained on somatotrophs.

The section was incubated in three rounds of staining: in the order of **ab155276**, **ab233954**, and **ab221494** for 30 mins at room temperature. Each round was followed by a separate fluorescent tyramide signal amplification system.

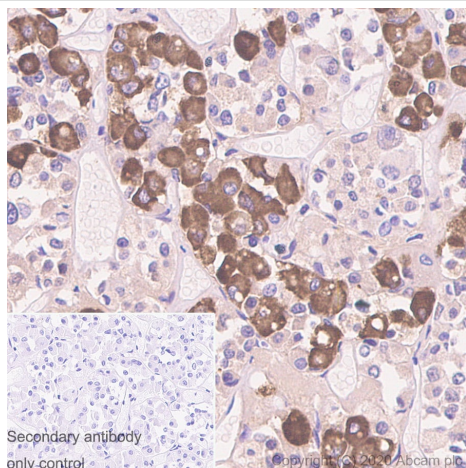
The immunostaining was performed on a Leica Biosystems BOND® RX instrument with an Opal™ 4-color kit. Image acquisition was performed with Leica SP8 confocal microscope.



Multiplex immunohistochemistry - Anti-ACTH antibody [57] - N-terminal- BSA and Azide free (ab212736)

Fluorescence multiplex immunohistochemical analysis of human pituitary gland tissue (formalin-fixed paraffin-embedded section). Panel A shows merged staining of anti-ACTH stained on corticotrophs ([ab233954](#); green; Opal™520) at 1:5000 (0.214 µg/ml) [Panel B], anti-TSH beta stained on thyrotrophs ([ab155958](#); red; Opal™570) at 1:500 (1.728 µg/ml) [Panel C], and anti-Growth Hormone stained on somatotrophs ([ab155276](#); gray; Opal™690) at 1:5000 (0.044 µg/ml) [Panel D] on human pituitary gland. DAPI was used as a nuclear counter stain. Followed by Opal Polymer HRP Ms + Rb secondary antibody. The immunostaining was performed on a Leica Biosystems BOND® RX instrument with an Opal™ 4-color kit. Image acquisition was performed with Leica SP8 confocal microscope. The section was incubated in three rounds of staining: in the order of [ab155276](#), [ab233954](#), and [ab155958](#) for 30 mins at room temperature. Each round was followed by a separate fluorescent tyramide signal amplification system. Heat mediated antigen retrieval with Tris-EDTA buffer (pH 9.0, epitope retrieval solution2) for 20 mins was used.

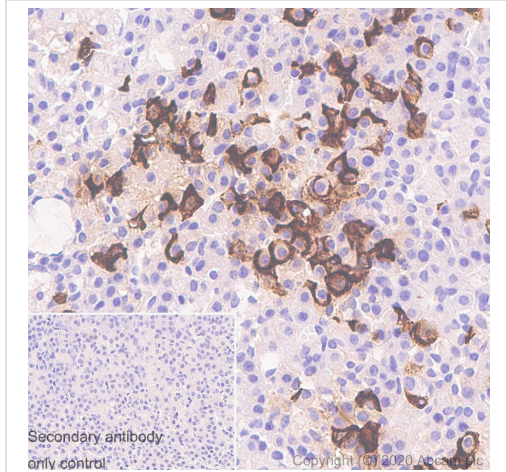
This data was developed using [ab233954](#), the same antibody clone in a different buffer formulation.



Immunohistochemistry (Formalin/PFA-fixed paraffin-embedded sections) - Anti-ACTH antibody [57] - N-terminal- BSA and Azide free (ab212736)

This data was developed using [ab233954](#), the same antibody clone in a different buffer formulation.

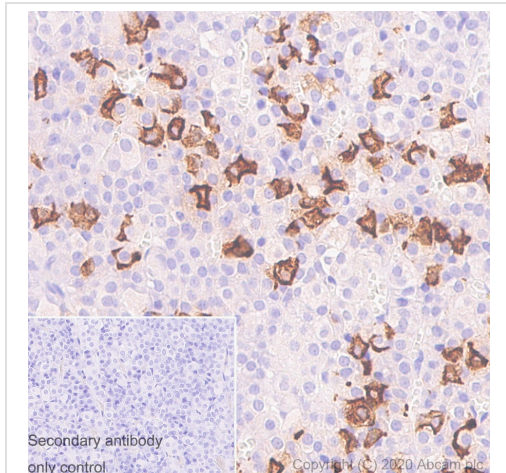
Immunohistochemical analysis of Human pituitary gland tissue stained for ACTH using [ab233954](#) at 1/5000 dilution. Positive staining on human pituitary gland. The section was incubated with [ab233954](#) for 30 mins at room temperature. The immunostaining was performed on a Leica Biosystems BOND® RX instrument.



Immunohistochemistry (Formalin/PFA-fixed paraffin-embedded sections) - Anti-ACTH antibody [57] - N-terminal- BSA and Azide free (ab212736)

This data was developed using [ab233954](#), the same antibody clone in a different buffer formulation.

Immunohistochemical analysis of Mouse pituitary gland tissue stained for ACTH using [ab233954](#) at 1/20000 dilution. Positive staining on mouse pituitary gland. The section was incubated with [ab233954](#) for 30 mins at room temperature. The immunostaining was performed on a Leica Biosystems BOND® RX instrument.



Immunohistochemistry (Formalin/PFA-fixed paraffin-embedded sections) - Anti-ACTH antibody [57] - N-terminal- BSA and Azide free (ab212736)

This data was developed using [ab233954](#), the same antibody clone in a different buffer formulation.

Immunohistochemical analysis of Rat pituitary gland tissue stained for ACTH using [ab233954](#) at 1/20000 dilution. Positive staining on rat pituitary gland. The section was incubated with [ab233954](#) for 30 mins at room temperature. The immunostaining was performed on a Leica Biosystems BOND® RX instrument.

Why choose a recombinant antibody?



Research with confidence
Consistent and reproducible results



Long-term and scalable supply
Recombinant technology



Success from the first experiment
Confirmed specificity



Ethical standards compliant
Animal-free production

Anti-ACTH antibody [57] - N-terminal- BSA and Azide free (ab212736)

Please note: All products are "FOR RESEARCH USE ONLY. NOT FOR USE IN DIAGNOSTIC PROCEDURES"

Our Abpromise to you: Quality guaranteed and expert technical support

- Replacement or refund for products not performing as stated on the datasheet
- Valid for 12 months from date of delivery
- Response to your inquiry within 24 hours
- We provide support in Chinese, English, French, German, Japanese and Spanish
- Extensive multi-media technical resources to help you
- We investigate all quality concerns to ensure our products perform to the highest standards

If the product does not perform as described on this datasheet, we will offer a refund or replacement. For full details of the Abpromise, please visit <https://www.abcam.com/abpromise> or contact our technical team.

Terms and conditions

- Guarantee only valid for products bought direct from Abcam or one of our authorized distributors