


## Product datasheet

# Anti-ACTH antibody [AH26] - BSA and Azide free ab212734

Recombinant

[4 Images](#)

### Overview

|                            |   |
|----------------------------|---|
| <b>Product name</b>        | Anti-ACTH antibody [AH26] - BSA and Azide free  |
| <b>Description</b>         | Mouse monoclonal [AH26] to ACTH - BSA and Azide free  |
| <b>Host species</b>        | Mouse   |
| <b>Specificity</b>         | ACTH (same as Corticotropin) is a 39 amino acid active peptide produced by the anterior pituitary. This antibody is specific to Synacthen (aa 1-24 of ACTH); does not react with CLIP (aa 17-39 of ACTH).   |
| <b>Tested applications</b> | <b>Suitable for:</b> IHC-P, IHC-Fr<br><b>Unsuitable for:</b> WB   |
| <b>Species reactivity</b>  | <b>Reacts with:</b> Mouse, Rat, Human<br><b>Predicted to work with:</b> Sheep, Guinea pig, Cow, a wide range of other species, Macaque monkey    |
| <b>Immunogen</b>           | Synthetic peptide. This information is proprietary to Abcam and/or its suppliers.   |
| <b>Positive control</b>    | IHC-P: Human, Mouse and Rat pituitary gland tissue. IHC-Fr: Mouse pituitary gland tissue  |
| <b>General notes</b>       | <p>This product has switched from a hybridoma to recombinant production method on 11th March 2022.</p> <p>Our <b>carrier-free</b> antibodies are typically supplied in a PBS-only formulation, purified and free of BSA, sodium azide and glycerol. The carrier-free buffer and high concentration allow for increased conjugation efficiency.</p> <p>This conjugation-ready format is designed for use with fluorochromes, metal isotopes, oligonucleotides, and enzymes, which makes them ideal for antibody labelling, functional and cell-based assays, flow-based assays (e.g. mass cytometry) and Multiplex Imaging applications.</p> <p>Use our <b>conjugation kits</b> for antibody conjugates that are ready-to-use in as little as 20 minutes with &lt;1 minute hands-on-time and 100% antibody recovery: available for fluorescent dyes, HRP, biotin and gold.</p> <p>This product is a recombinant monoclonal antibody, which offers several advantages including:</p> <ul style="list-style-type: none"><li>- High batch-to-batch consistency and reproducibility</li><li>- Improved sensitivity and specificity</li><li>- Long-term security of supply</li><li>- Animal-free production</li></ul> |

For more information [see here](#).

## Properties

---

|                             |   |
|-----------------------------|---|
| <b>Form</b>                 | Liquid  |
| <b>Storage instructions</b> | Shipped at 4°C. Store at +4°C short term (1-2 weeks). Upon delivery aliquot. Store at -20°C long term. Avoid freeze / thaw cycle. |
| <b>Storage buffer</b>       | pH: 7.2<br>Constituent: 100% PBS  |
| <b>Carrier free</b>         | Yes   |
| <b>Purity</b>               | Protein A purified  |
| <b>Clonality</b>            | Monoclonal  |
| <b>Clone number</b>         | AH26  |
| <b>Isotype</b>              | IgG1  |
| <b>Light chain type</b>     | kappa   |

## Applications

---

**The Abpromise guarantee** Our **Abpromise guarantee** covers the use of ab212734 in the following tested applications. The application notes include recommended starting dilutions; optimal dilutions/concentrations should be determined by the end user.

| Application | Abreviews | Notes   |
|-------------|-----------|---|
| IHC-P       |           | Use at an assay dependent concentration. Perform heat mediated antigen retrieval with citrate buffer pH 6 before commencing with IHC staining protocol. |
| IHC-Fr      |           | Use at an assay dependent concentration.  |

**Application notes** Is unsuitable for WB.

## Target

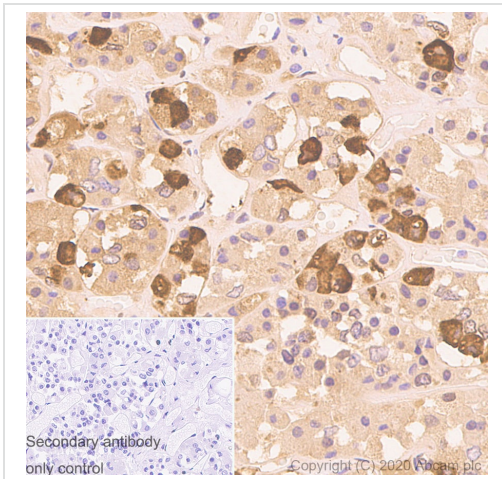
---

**Relevance** ACTH occurs in cells of the anterior pituitary and in neurons in brain. It regulates the corticosteroid production in the adrenal cortex. Beta endorphin and Met enkephalin are endogenous opiates. MSH (melanocyte stimulating hormone) increases the pigmentation of skin by increasing melanin production in melanocytes.

**Cellular localization** Secreted

## Images

---



Immunohistochemistry (Formalin/PFA-fixed paraffin-embedded sections) - Anti-ACTH antibody [AH26] - BSA and Azide free (ab212734)

This data was developed using [ab233953](#), the same antibody clone in a different buffer formulation.

Immunohistochemical analysis of paraffin-embedded Human pituitary gland tissue labeling ACTH with [ab233953](#) at 1/5000 (0.233 µg/ml) dilution, followed by a ready to use Goat Anti-Mouse IgG H&L (HRP polymer) ([ab214879](#)).

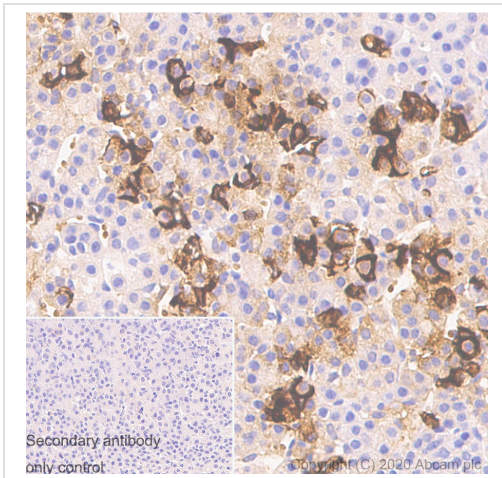
Positive staining on human pituitary gland. The section was incubated with [ab233953](#) for 30 mins at room temperature.

The immunostaining was performed on a Leica Biosystems BOND® RX instrument

Counterstained with Hematoxylin.

Secondary antibody only control: Secondary antibody is a ready to use Goat Anti-Mouse IgG H&L (HRP polymer) ([ab214879](#))

Heat mediated antigen retrieval with Citrate buffer (pH 6.0, epitope retrieval solution 1) for 20 mins



Immunohistochemistry (Formalin/PFA-fixed paraffin-embedded sections) - Anti-ACTH antibody [AH26] - BSA and Azide free (ab212734)

This data was developed using [ab233953](#), the same antibody clone in a different buffer formulation.

Immunohistochemical analysis of paraffin-embedded Mouse pituitary gland tissue labeling ACTH with [ab233953](#) at 1/10000 (0.116 µg/ml) dilution, followed by a ready to use LeicaDS9800 (Bond™ Polymer Refine Detection).

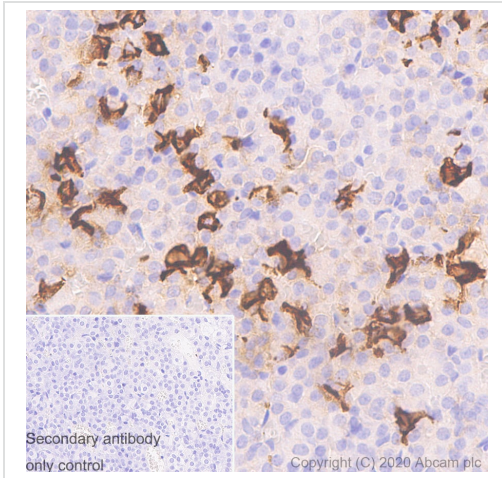
Positive staining on mouse pituitary gland. The section was incubated with [ab233953](#) for 30 mins at room temperature and then combined with specific mouse IgG antibody ([ab125913](#), 1:1000) for 8mins.

The immunostaining was performed on a Leica Biosystems BOND® RX instrument

Counterstained with Hematoxylin.

Secondary antibody only control: Secondary antibody is a ready to use LeicaDS9800 (Bond™ Polymer Refine Detection)

Heat mediated antigen retrieval with Citrate buffer (pH 6.0, epitope retrieval solution 1) for 20 mins



Immunohistochemistry (Formalin/PFA-fixed paraffin-embedded sections) - Anti-ACTH antibody [AH26] - BSA and Azide free (ab212734)

This data was developed using **ab233953**, the same antibody clone in a different buffer formulation.

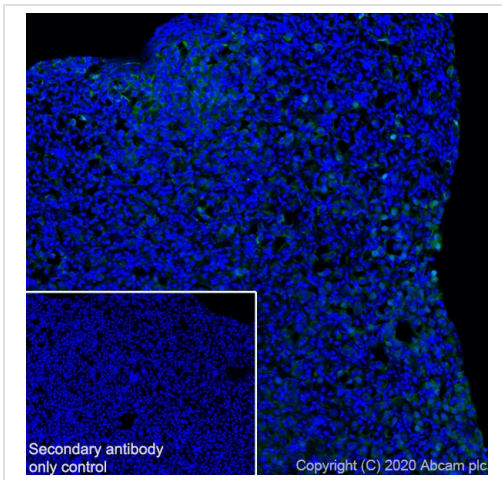
Immunohistochemical analysis of paraffin-embedded Rat pituitary gland tissue labeling ACTH with **ab233953** at 1/10000 (0.116 µg/ml) dilution, followed by a ready to use LeicaDS9800 (Bond™ Polymer Refine Detection).

Positive staining on rat pituitary gland. The section was incubated with **ab233953** for 30 mins at room temperature and then combined with specific mouse IgG antibody (**ab125913**, 1:1000) for 8mins. The immunostaining was performed on a Leica Biosystems BOND® RX instrument

Counterstained with Hematoxylin.

Secondary antibody only control: Secondary antibody is a ready to use LeicaDS9800 (Bond™ Polymer Refine Detection)

Heat mediated antigen retrieval with Citrate buffer (pH 6.0, epitope retrieval solution 1) for 20 mins



Immunohistochemistry (Frozen sections) - Anti-ACTH antibody [AH26] - BSA and Azide free (ab212734)

This data was developed using **ab233953**, the same antibody clone in a different buffer formulation.

Immunohistochemical analysis of 4% PFA-fixed, 0.2% Triton X-100 permeabilized frozen Mouse pituitary (fresh frozen) tissue labeling ACTH with **ab233953** at 1/100 (11.64 µg/ml) dilution followed by **ab150113**, Goat Anti-Mouse IgG H&L (Alexa Fluor® 488) at 1/1000 dilution (Green).

Positive staining on mouse pituitary. The nuclear counterstain was DAPI (Blue).

Secondary antibody control: Secondary antibody is **ab150113** Goat Anti-Mouse IgG H&L (Alexa Fluor® 488) at 1/1000 dilution.

Heat mediated antigen retrieval using sodium citrate buffer (10mM citrate pH 6.0 + 0.05% Tween-20)

**Please note:** All products are "FOR RESEARCH USE ONLY. NOT FOR USE IN DIAGNOSTIC PROCEDURES"

**Our Abpromise to you: Quality guaranteed and expert technical support**

- Replacement or refund for products not performing as stated on the datasheet

- Valid for 12 months from date of delivery
- Response to your inquiry within 24 hours
  
- We provide support in Chinese, English, French, German, Japanese and Spanish
- Extensive multi-media technical resources to help you
- We investigate all quality concerns to ensure our products perform to the highest standards

If the product does not perform as described on this datasheet, we will offer a refund or replacement. For full details of the Abpromise, please visit <https://www.abcam.com/abpromise> or contact our technical team.

### **Terms and conditions**

---

- Guarantee only valid for products bought direct from Abcam or one of our authorized distributors