


Product datasheet

Anti-Actin Regulatory Protein CAPG/MCP antibody ab155688

★★★★★ [2 Abreviews](#) [4 References](#) [4 Images](#)

Overview

| | |
|----------------------------|---|
| Product name | Anti-Actin Regulatory Protein CAPG/MCP antibody |
| Description | Rabbit polyclonal to Actin Regulatory Protein CAPG/MCP |
| Host species | Rabbit |
| Tested applications | Suitable for: WB, IHC-P, ICC/IF |
| Species reactivity | Reacts with: Mouse, Rat, Human Predicted to work with: Cow  |
| Immunogen | Recombinant fragment corresponding to Human Actin Regulatory Protein CAPG/MCP aa 157-333. Database link: P40121 |
| Positive control | A549, HeLa, HepG2, HCT116 and NIH 3T3 whole cell lysates; HeLa cells; Human NCIN87 xenograft tissue. |
| General notes | <p>The Life Science industry has been in the grips of a reproducibility crisis for a number of years. Abcam is leading the way in addressing this with our range of recombinant monoclonal antibodies and knockout edited cell lines for gold-standard validation. Please check that this product meets your needs before purchasing.</p> <p>If you have any questions, special requirements or concerns, please send us an inquiry and/or contact our Support team ahead of purchase. Recommended alternatives for this product can be found below, along with publications, customer reviews and Q&As</p> |

Properties

| | |
|-----------------------------|---|
| Form | Liquid |
| Storage instructions | Shipped at 4°C. Upon delivery aliquot. Store at -20°C or -80°C. Avoid freeze / thaw cycle. |
| Storage buffer | pH: 7.00 Preservative: 0.01% Thimerosal (merthiolate) Constituents: 1.21% Tris, 0.75% Glycine, 20% Glycerol (glycerin, glycerine) |
| Purity | Immunogen affinity purified |
| Clonality | Polyclonal |
| Isotype | IgG |

Applications

The Abpromise guarantee

Our **Abpromise guarantee** covers the use of ab155688 in the following tested applications.

The application notes include recommended starting dilutions; optimal dilutions/concentrations should be determined by the end user.

| Application | Abreviews | Notes |
|-------------|-----------|--|
| WB | ★★★★★ (1) | 1/500 - 1/3000. Predicted molecular weight: 38 kDa. |
| IHC-P | | 1/100 - 1/1000. Perform heat mediated antigen retrieval with citrate buffer pH 6 before commencing with IHC staining protocol. |
| ICC/IF | ★★★★★ (1) | 1/100 - 1/1000. |

Target

Function

Calcium-sensitive protein which reversibly blocks the barbed ends of actin filaments but does not sever preformed actin filaments. May play an important role in macrophage function. May play a role in regulating cytoplasmic and/or nuclear structures through potential interactions with actin. May bind DNA.

Tissue specificity

Macrophages and macrophage-like cells.

Sequence similarities

Belongs to the villin/gelsolin family.
Contains 3 gelsolin-like repeats.

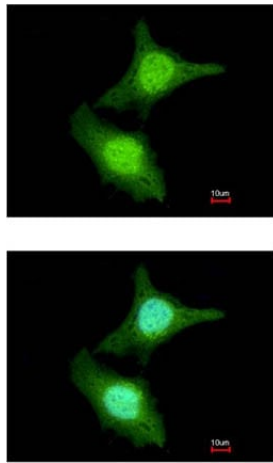
Post-translational modifications

The N-terminus is blocked.

Cellular localization

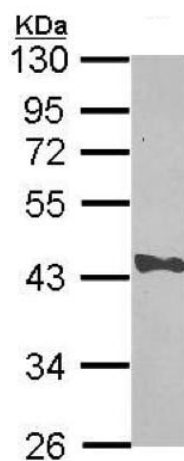
Cytoplasm. Nucleus. Melanosome. Identified by mass spectrometry in melanosome fractions from stage I to stage IV.

Images



Immunocytochemistry/ Immunofluorescence - Anti-Actin Regulatory Protein CAPG/MCP antibody (ab155688)

Immunofluorescent analysis of paraformaldehyde-fixed HeLa cells labeling Actin Regulatory Protein CAPG/MCP with ab155688 at 1/200 dilution. Lower image shows cells co-stained with Hoechst 33342.

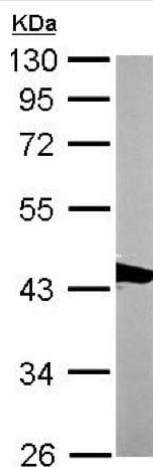


Western blot - Anti-Actin Regulatory Protein CAPG/MCP antibody (ab155688)

Anti-Actin Regulatory Protein CAPG/MCP antibody (ab155688) at 1/1000 dilution + HeLa whole cell lysate at 30 µg

Predicted band size: 38 kDa

10% SDS PAGE

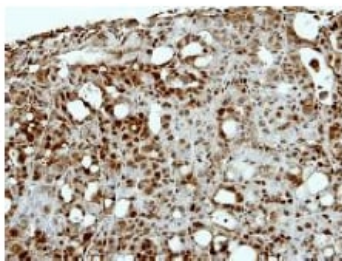


Western blot - Anti-Actin Regulatory Protein CAPG/MCP antibody (ab155688)

Anti-Actin Regulatory Protein CAPG/MCP antibody (ab155688) at 1/2000 dilution + NIH 3T3 whole cell lysate at 30 µg

Predicted band size: 38 kDa

10% SDS PAGE



Immunohistochemical analysis of paraffin-embedded Human NCIN87 xenograft tissue labeling Actin Regulatory Protein CAPG/MCP with ab155688 at 1/500 dilution.

Immunohistochemistry (Formalin/PFA-fixed paraffin-embedded sections) - Anti-Actin Regulatory Protein CAPG/MCP antibody (ab155688)

Please note: All products are "FOR RESEARCH USE ONLY. NOT FOR USE IN DIAGNOSTIC PROCEDURES"

Our Abpromise to you: Quality guaranteed and expert technical support

- Replacement or refund for products not performing as stated on the datasheet
- Valid for 12 months from date of delivery
- Response to your inquiry within 24 hours
- We provide support in Chinese, English, French, German, Japanese and Spanish
- Extensive multi-media technical resources to help you
- We investigate all quality concerns to ensure our products perform to the highest standards

If the product does not perform as described on this datasheet, we will offer a refund or replacement. For full details of the Abpromise, please visit <https://www.abcam.com/abpromise> or contact our technical team.

Terms and conditions

- Guarantee only valid for products bought direct from Abcam or one of our authorized distributors