




## Product datasheet

# Anti-Activin Receptor Type IA antibody ab115301

[2 Images](#)

### Overview

<b>Product name</b>	Anti-Activin Receptor Type IA antibody
<b>Description</b>	Goat polyclonal to Activin Receptor Type IA
<b>Host species</b>	Goat
<b>Tested applications</b>	<b>Suitable for:</b> WB, IHC-P
<b>Species reactivity</b>	<b>Reacts with:</b> Human <b>Predicted to work with:</b> Mouse, Rat, Goat, Horse, Cow, Dog, Pig 
<b>Immunogen</b>	Synthetic peptide: C-RKFKRRNQERLNPRD , corresponding to internal sequence amino acids 147-161 of Human Activin Receptor Type IA. <div>  <a href="#">Run BLAST with</a>  <a href="#">Run BLAST with</a> </div>
<b>Positive control</b>	Human Testis tissue; Human Umbilical Cord lysate
<b>General notes</b>	<p>The Life Science industry has been in the grips of a reproducibility crisis for a number of years. Abcam is leading the way in addressing this with our range of recombinant monoclonal antibodies and knockout edited cell lines for gold-standard validation. Please check that this product meets your needs before purchasing.</p> <p>If you have any questions, special requirements or concerns, please send us an inquiry and/or contact our Support team ahead of purchase. Recommended alternatives for this product can be found below, along with publications, customer reviews and Q&amp;As</p>

### Properties

<b>Form</b>	Liquid
<b>Storage instructions</b>	Shipped at 4°C. Store at +4°C short term (1-2 weeks). Upon delivery aliquot. Store at -20°C long term.
<b>Storage buffer</b>	pH: 7.30 Preservative: 0.02% Sodium azide Constituents: 99% Tris buffered saline, 0.5% BSA
<b>Purity</b>	Immunogen affinity purified
<b>Clonality</b>	Polyclonal
<b>Isotype</b>	IgG

## Applications

### The Abpromise guarantee

Our **Abpromise guarantee** covers the use of ab115301 in the following tested applications.

The application notes include recommended starting dilutions; optimal dilutions/concentrations should be determined by the end user.

Application	Abreviews	Notes
WB		Use a concentration of 0.3 - 1 µg/ml. Predicted molecular weight: 57 kDa.
IHC-P		Use a concentration of 4 µg/ml. Perform heat mediated antigen retrieval with citrate buffer pH 6 before commencing with IHC staining protocol.

## Target

### Function

On ligand binding, forms a receptor complex consisting of two type II and two type I transmembrane serine/threonine kinases. Type II receptors phosphorylate and activate type I receptors which autophosphorylate, then bind and activate SMAD transcriptional regulators. Receptor for activin. May be involved for left-right pattern formation during embryogenesis.

### Tissue specificity

Expressed in normal parenchymal cells, endothelial cells, fibroblasts and tumor-derived epithelial cells.

### Involvement in disease

Defects in ACVR1 are a cause of fibrodysplasia ossificans progressiva (FOP) [MIM:135100]. FOP is a rare autosomal dominant disorder of skeletal malformations and progressive extraskletal ossification. Heterotopic ossification in FOP begins in childhood and can be induced by trauma or may occur without warning. Bone formation is episodic and progressive, leading to extra-articular ankylosis of all major joints of the axial and appendicular skeleton, rendering movement impossible.

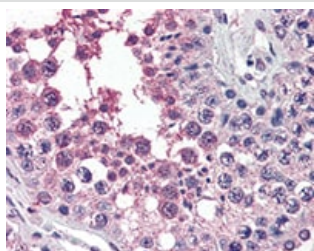
### Sequence similarities

Belongs to the protein kinase superfamily. TKL Ser/Thr protein kinase family. TGFB receptor subfamily.  
Contains 1 GS domain.  
Contains 1 protein kinase domain.

### Cellular localization

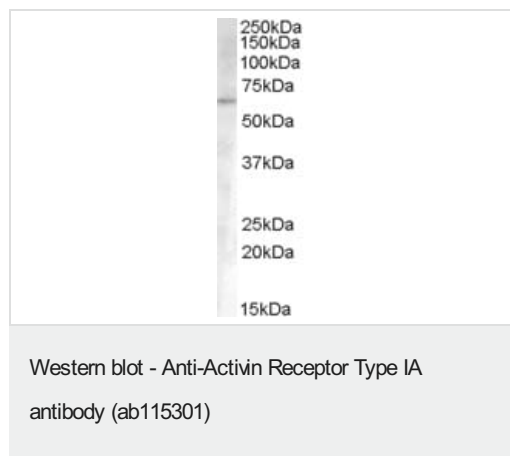
Membrane.

## Images



ab115301, at 4 µg/ml, staining Activin Receptor Type IA in formalin-fixed, paraffin-embedded Human Testis by Immunohistochemistry, using a biotinylated anti-goat IgG secondary antibody, alkaline phosphatase-streptavidin and chromogen.

Immunohistochemistry (Formalin/PFA-fixed paraffin-embedded sections) - Anti-Activin Receptor Type IA antibody (ab115301)



Anti-Activin Receptor Type IA antibody (ab115301) at 0.3 µg/ml +  
Human Umbilical Cord lysate (in RIPA buffer) at 35 µg

Developed using the ECL technique.

**Predicted band size:** 57 kDa

Primary incubation was 1 hour.

**Please note:** All products are "FOR RESEARCH USE ONLY. NOT FOR USE IN DIAGNOSTIC PROCEDURES"

### Our Abpromise to you: Quality guaranteed and expert technical support

---

- Replacement or refund for products not performing as stated on the datasheet
- Valid for 12 months from date of delivery
- Response to your inquiry within 24 hours
- We provide support in Chinese, English, French, German, Japanese and Spanish
- Extensive multi-media technical resources to help you
- We investigate all quality concerns to ensure our products perform to the highest standards

If the product does not perform as described on this datasheet, we will offer a refund or replacement. For full details of the Abpromise, please visit <https://www.abcam.com/abpromise> or contact our technical team.

### Terms and conditions

---

- Guarantee only valid for products bought direct from Abcam or one of our authorized distributors