

Product datasheet

Anti-CTL8 antibody ab96756

[2 References](#) [3 Images](#)

Overview

Product name	Anti-CTL8 antibody
Description	Rabbit polyclonal to CTL8
Host species	Rabbit
Tested applications	Suitable for: ICC/IF, WB, IHC-P
Species reactivity	Reacts with: Human
Immunogen	Recombinant protein fragment containing a sequence corresponding to a region within amino acids 156 and 353 of CTL8 (NP_110439)
Positive control	A431 and Molt-4 whole cell lysate. H1299, HeLa, HepG2 cell lines. A549 xenograft tissue.
General notes	<p>The Life Science industry has been in the grips of a reproducibility crisis for a number of years. Abcam is leading the way in addressing this with our range of recombinant monoclonal antibodies and knockout edited cell lines for gold-standard validation. Please check that this product meets your needs before purchasing.</p> <p>If you have any questions, special requirements or concerns, please send us an inquiry and/or contact our Support team ahead of purchase. Recommended alternatives for this product can be found below, along with publications, customer reviews and Q&As</p>

Properties

Form	Liquid
Storage instructions	Shipped at 4°C. Upon delivery aliquot. Store at -20°C or -80°C. Avoid freeze / thaw cycle.
Storage buffer	pH: 7.00 Preservative: 0.01% Thimerosal (merthiolate) Constituents: 1.21% Tris, 0.75% Glycine, 10% Glycerol (glycerin, glycerine)
Purity	Immunogen affinity purified
Clonality	Polyclonal
Isotype	IgG

Applications

The Abpromise guarantee Our **Abpromise guarantee** covers the use of ab96756 in the following tested applications.

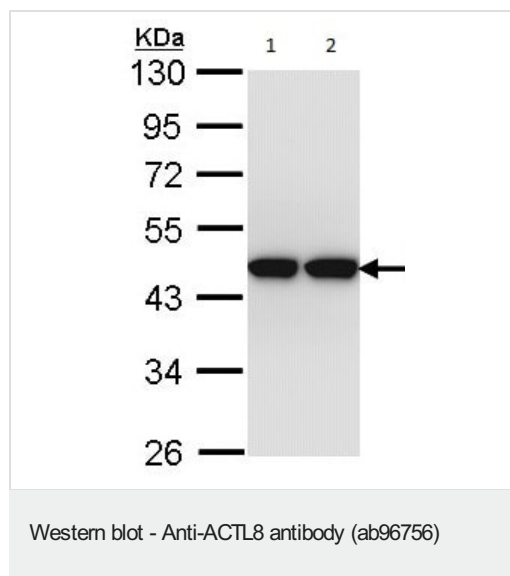
The application notes include recommended starting dilutions; optimal dilutions/concentrations should be determined by the end user.

Application	Abreviews	Notes
ICC/IF		1/100 - 1/500.
WB		1/500 - 1/3000. Predicted molecular weight: 41 kDa.
IHC-P		1/100 - 1/500. Antigen retrieval using heat mediated 10mM Citrate buffer (pH 6.0) or Tris-EDTA buffer (pH 8.0) is suggested.

Target

Tissue specificity	Strongly expressed in testis and pancreas. Weak expression in placenta.
Sequence similarities	Belongs to the actin family.
Cellular localization	Cytoplasm > cytoskeleton.

Images



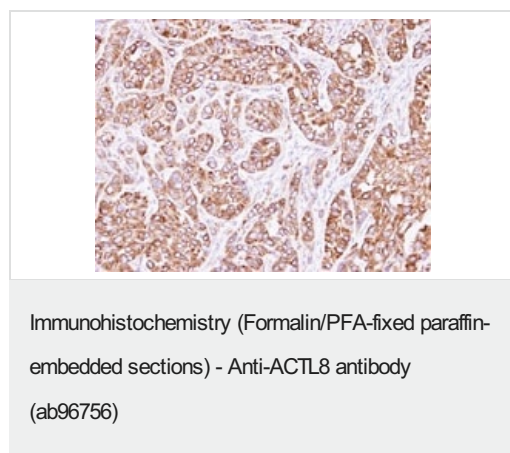
All lanes : Anti-ACTL8 antibody (ab96756) at 1/1000 dilution

Lane 1 : HepG2 whole cell lysate

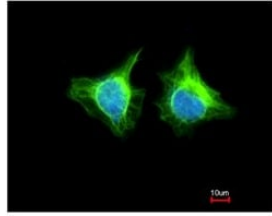
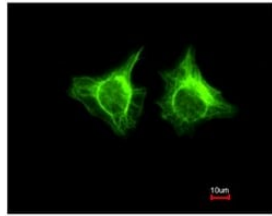
Lane 2 : Molt-4 whole cell lysate

Lysates/proteins at 30 µg per lane.

Predicted band size: 41 kDa



Immunohistochemical analysis of paraffin-embedded A549 xenograft , using ab96756 at 1/500 dilution.



ab96756 at 1/200 staining ACTL8 in methanol-fixed HeLa by Immunofluorescence, lower image is costained with Hoeschst 33342.

Immunocytochemistry/ Immunofluorescence - Anti-
ACTL8 antibody (ab96756)

Please note: All products are "FOR RESEARCH USE ONLY. NOT FOR USE IN DIAGNOSTIC PROCEDURES"

Our Abpromise to you: Quality guaranteed and expert technical support

- Replacement or refund for products not performing as stated on the datasheet
- Valid for 12 months from date of delivery
- Response to your inquiry within 24 hours
- We provide support in Chinese, English, French, German, Japanese and Spanish
- Extensive multi-media technical resources to help you
- We investigate all quality concerns to ensure our products perform to the highest standards

If the product does not perform as described on this datasheet, we will offer a refund or replacement. For full details of the Abpromise, please visit <https://www.abcam.com/abpromise> or contact our technical team.

Terms and conditions

- Guarantee only valid for products bought direct from Abcam or one of our authorized distributors