




# Anti-ADAM12 antibody ab223476

[1 References](#) [2 Images](#)

## Overview

<b>Product name</b>	Anti-ADAM12 antibody
<b>Description</b>	Goat polyclonal to ADAM12
<b>Host species</b>	Goat
<b>Tested applications</b>	<b>Suitable for:</b> WB
<b>Species reactivity</b>	<b>Reacts with:</b> Mouse, Rat, Human, Pig <b>Predicted to work with:</b> Cow 
<b>Immunogen</b>	Synthetic peptide corresponding to Human ADAM12 aa 200-300 (internal sequence) (Cysteine residue). (NP_003465.3). Database link: <a href="#">O43184</a> <div>  <a href="#">Run BLAST with</a>  <a href="#">Run BLAST with</a> </div>
<b>Positive control</b>	WB: Human, mouse, rat and pig heart lysates.
<b>General notes</b>	<p>The Life Science industry has been in the grips of a reproducibility crisis for a number of years. Abcam is leading the way in addressing this with our range of recombinant monoclonal antibodies and knockout edited cell lines for gold-standard validation. Please check that this product meets your needs before purchasing.</p> <p>If you have any questions, special requirements or concerns, please send us an inquiry and/or contact our Support team ahead of purchase. Recommended alternatives for this product can be found below, along with publications, customer reviews and Q&amp;As</p>

## Properties

<b>Form</b>	Liquid
<b>Storage instructions</b>	Shipped at 4°C. Store at +4°C short term (1-2 weeks). Upon delivery aliquot. Store at -20°C long term. Avoid freeze / thaw cycle.
<b>Storage buffer</b>	pH: 7.30 Preservative: 0.02% Sodium azide Constituents: 0.5% BSA, Tris buffered saline
<b>Purity</b>	Immunogen affinity purified
<b>Purification notes</b>	ab223476 was purified from goat serum by ammonium sulphate precipitation followed by antigen affinity chromatography using the immunizing peptide.
<b>Clonality</b>	Polyclonal

Isotype

IgG

## Applications

### The Abpromise guarantee

Our **Abpromise guarantee** covers the use of ab223476 in the following tested applications.

The application notes include recommended starting dilutions; optimal dilutions/concentrations should be determined by the end user.

Application	Abreviews	Notes
WB		Use a concentration of 0.1 - 0.3 µg/ml. Detects a band of approximately 100 kDa (predicted molecular weight: 100 kDa). 1 hour primary incubation is recommended for this product.

## Target

### Function

Involved in skeletal muscle regeneration, specifically at the onset of cell fusion. Also involved in macrophage-derived giant cells (MGC) and osteoclast formation from mononuclear precursors.

### Tissue specificity

Isoform 1 is expressed in placenta and skeletal, cardiac, and smooth muscle. Isoform 2 seems to be expressed only in placenta or in embryo and fetus. Both forms were expressed in some tumor cells lines. Not detected in brain, lung, liver, kidney or pancreas.

### Sequence similarities

Contains 1 disintegrin domain.  
Contains 1 EGF-like domain.  
Contains 1 peptidase M12B domain.

### Domain

The cysteine-rich domain supports cell adhesion through syndecans and triggers signaling events that lead to beta-1 integrin-dependent cell spreading. In carcinomas cells the binding of this domain to syndecans does not allow the integrin-mediated cell spreading.  
The conserved cysteine present in the cysteine-switch motif binds the catalytic zinc ion, thus inhibiting the enzyme. The dissociation of the cysteine from the zinc ion upon the activation-peptide release activates the enzyme.

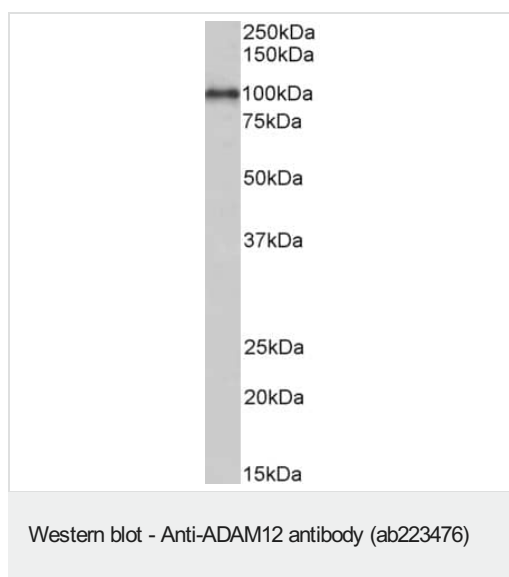
### Post-translational modifications

The precursor is cleaved by a furin endopeptidase.

### Cellular localization

Secreted and Cell membrane.

## Images



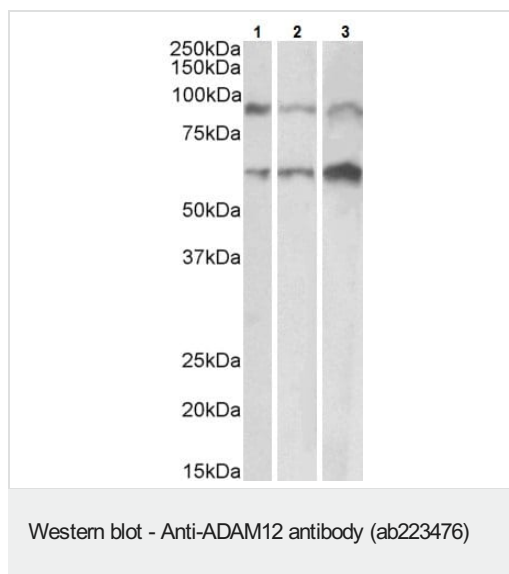
Anti-ADAM12 antibody (ab223476) at 0.1 µg/ml + Human heart lysate (in RIPA buffer) at 35 µg

Developed using the ECL technique.

**Predicted band size:** 100 kDa

**Observed band size:** 100 kDa

Primary incubation was 1 hour.



**All lanes :** Anti-ADAM12 antibody (ab223476) at 0.1 µg/ml

**Lane 1 :** Mouse heart lysate (in RIPA buffer)

**Lane 2 :** Rat heart lysate (in RIPA buffer)

**Lane 3 :** Pig heart lysate (in RIPA buffer)

Lysates/proteins at 35 µg per lane.

Developed using the ECL technique.

**Predicted band size:** 100 kDa

**Observed band size:** 60,90 kDa

Primary incubation was 1 hour.

**Please note:** All products are "FOR RESEARCH USE ONLY. NOT FOR USE IN DIAGNOSTIC PROCEDURES"

### **Our Abpromise to you: Quality guaranteed and expert technical support**

---

- Replacement or refund for products not performing as stated on the datasheet
- Valid for 12 months from date of delivery
- Response to your inquiry within 24 hours
  
- We provide support in Chinese, English, French, German, Japanese and Spanish
- Extensive multi-media technical resources to help you
- We investigate all quality concerns to ensure our products perform to the highest standards

If the product does not perform as described on this datasheet, we will offer a refund or replacement. For full details of the Abpromise, please visit <https://www.abcam.com/abpromise> or contact our technical team.

### **Terms and conditions**

---

- Guarantee only valid for products bought direct from Abcam or one of our authorized distributors