

## Product datasheet

# Anti-ADAM12 antibody - Aminoterminal end ab39155

★★★★☆ [3 Abreviews](#) [8 References](#) [1 Image](#)

### Overview

---

<b>Product name</b>	Anti-ADAM12 antibody - Aminoterminal end
<b>Description</b>	Rabbit polyclonal to ADAM12 - Aminoterminal end
<b>Host species</b>	Rabbit
<b>Specificity</b>	This antibody recognizes latent unprocessed and processed forms of ADAM12, but does not react with other ADAMs.
<b>Tested applications</b>	<b>Suitable for:</b> WB, ICC/IF, IHC-Fr, Flow Cyt
<b>Species reactivity</b>	<b>Reacts with:</b> Mouse, Rat, Human, Pig
<b>Immunogen</b>	Synthetic peptide corresponding to Human ADAM12 (N terminal).
<b>General notes</b>	<p>The Life Science industry has been in the grips of a reproducibility crisis for a number of years. Abcam is leading the way in addressing this with our range of recombinant monoclonal antibodies and knockout edited cell lines for gold-standard validation. Please check that this product meets your needs before purchasing.</p> <p>If you have any questions, special requirements or concerns, please send us an inquiry and/or contact our Support team ahead of purchase. Recommended alternatives for this product can be found below, along with publications, customer reviews and Q&amp;As</p>

### Properties

---

<b>Form</b>	Liquid
<b>Storage instructions</b>	Shipped at 4°C. Store at +4°C short term (1-2 weeks). Upon delivery aliquot. Store at -20°C long term.
<b>Storage buffer</b>	pH: 7.40 Preservative: 0.05% Sodium azide Constituents: 50% Glycerol, 2.9% Sodium chloride, PBS
<b>Purity</b>	Immunogen affinity purified
<b>Purification notes</b>	The antibody has been peptide affinity purified.
<b>Clonality</b>	Polyclonal
<b>Isotype</b>	IgG

### Applications

## The Abpromise guarantee

Our **Abpromise guarantee** covers the use of ab39155 in the following tested applications.

The application notes include recommended starting dilutions; optimal dilutions/concentrations should be determined by the end user.

Application	Abreviews	Notes
WB		1/1000 - 1/5000. Predicted molecular weight: 100 kDa. A recommended starting concentration for Western blots is 1/1000 when using colorimetric substrates such as BCIP/NBT and 1/5000 for chemiluminescent substrates. EDTA/EGTA treatment of tissues or lysates is required to see latent zymogen.
ICC/IF	★★★★★ (3)	Use at an assay dependent concentration.
IHC-Fr		Use at an assay dependent concentration. PubMed: 23671573
Flow Cyt		Use at an assay dependent concentration. PubMed: 19213876 <b>ab171870</b> - Rabbit polyclonal IgG, is suitable for use as an isotype control with this antibody.

## Target

### Function

Involved in skeletal muscle regeneration, specifically at the onset of cell fusion. Also involved in macrophage-derived giant cells (MGC) and osteoclast formation from mononuclear precursors.

### Tissue specificity

Isoform 1 is expressed in placenta and skeletal, cardiac, and smooth muscle. Isoform 2 seems to be expressed only in placenta or in embryo and fetus. Both forms were expressed in some tumor cells lines. Not detected in brain, lung, liver, kidney or pancreas.

### Sequence similarities

Contains 1 disintegrin domain.  
Contains 1 EGF-like domain.  
Contains 1 peptidase M12B domain.

### Domain

The cysteine-rich domain supports cell adhesion through syndecans and triggers signaling events that lead to beta-1 integrin-dependent cell spreading. In carcinomas cells the binding of this domain to syndecans does not allow the integrin-mediated cell spreading.

The conserved cysteine present in the cysteine-switch motif binds the catalytic zinc ion, thus inhibiting the enzyme. The dissociation of the cysteine from the zinc ion upon the activation-peptide release activates the enzyme.

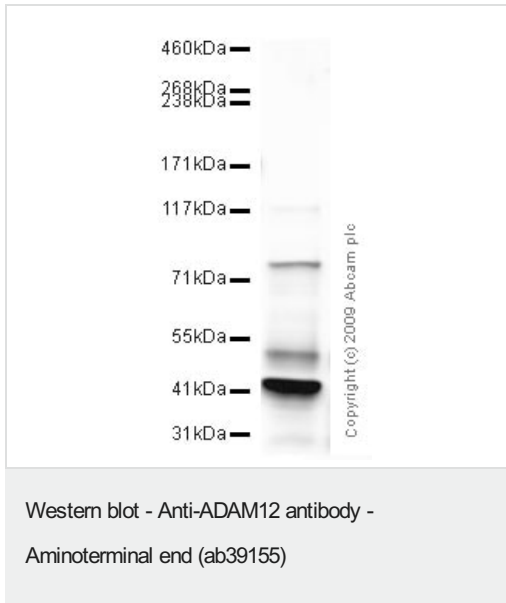
### Post-translational modifications

The precursor is cleaved by a furin endopeptidase.

### Cellular localization

Secreted and Cell membrane.

## Images



Anti-ADAM12 antibody - Aminoterminal end (ab39155) at 1/1000 dilution + Human heart tissue lysate - total protein (**ab29431**) at 10 µg

**Secondary**

Goat polyclonal to Rabbit IgG - H&L - Pre-Adsorbed (HRP) (**ab65484**) at 1/3000 dilution

**Predicted band size:** 100 kDa

**Observed band size:** 84 kDa

**Additional bands at:** 117 kDa, 42 kDa, 50 kDa. We are unsure as to the identity of these extra bands.

**Please note:** All products are "FOR RESEARCH USE ONLY. NOT FOR USE IN DIAGNOSTIC PROCEDURES"

**Our Abpromise to you: Quality guaranteed and expert technical support**

- Replacement or refund for products not performing as stated on the datasheet
- Valid for 12 months from date of delivery
- Response to your inquiry within 24 hours
- We provide support in Chinese, English, French, German, Japanese and Spanish
- Extensive multi-media technical resources to help you
- We investigate all quality concerns to ensure our products perform to the highest standards

If the product does not perform as described on this datasheet, we will offer a refund or replacement. For full details of the Abpromise, please visit <https://www.abcam.com/abpromise> or contact our technical team.

**Terms and conditions**

- Guarantee only valid for products bought direct from Abcam or one of our authorized distributors