

Anti-ADAMTS14 antibody ab198885

[3 References](#) [1 Image](#)

Overview

| | |
|----------------------------|---|
| Product name | Anti-ADAMTS14 antibody |
| Description | Rabbit polyclonal to ADAMTS14 |
| Host species | Rabbit |
| Tested applications | Suitable for: IHC-P |
| Species reactivity | Reacts with: Human |
| Immunogen | Synthetic peptide corresponding to Human ADAMTS14 (internal sequence). NP_542453. Database link: Q8WXS8 |
| Positive control | Human breast cancer tissue. |
| General notes | <p>The Life Science industry has been in the grips of a reproducibility crisis for a number of years. Abcam is leading the way in addressing this with our range of recombinant monoclonal antibodies and knockout edited cell lines for gold-standard validation. Please check that this product meets your needs before purchasing.</p> <p>If you have any questions, special requirements or concerns, please send us an inquiry and/or contact our Support team ahead of purchase. Recommended alternatives for this product can be found below, along with publications, customer reviews and Q&As</p> |

Properties

| | |
|-----------------------------|---|
| Form | Liquid |
| Storage instructions | Shipped at 4°C. Store at +4°C short term (1-2 weeks). Upon delivery aliquot. Store at -20°C long term. Avoid freeze / thaw cycle. |
| Storage buffer | pH: 7.4 Preservative: 0.05% Sodium azide Constituents: 50% Glycerol (glycerin, glycerine), 49% PBS |
| Purity | Immunogen affinity purified |
| Clonality | Polyclonal |
| Isotype | IgG |

Applications

The Abpromise guarantee

Our **Abpromise guarantee** covers the use of ab198885 in the following tested applications.

The application notes include recommended starting dilutions; optimal dilutions/concentrations should be determined by the end user.

| Application | Abreviews | Notes |
|-------------|-----------|---------------|
| IHC-P | | 1/25 - 1/100. |

Target

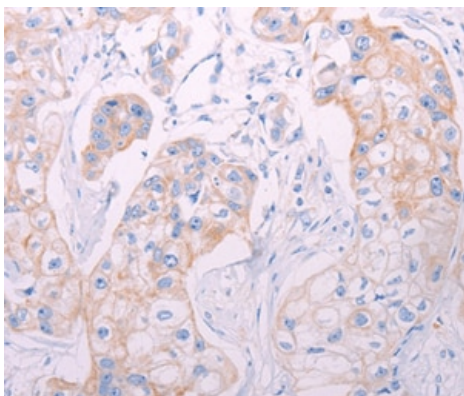
Relevance

ADAMTS14 is a member of the ADAMs family of proteinases with 4 thrombospondin (TS)-like domains. These TS motifs are thought to bind ADAMTS14 to the ECM. ADAMTS14 is closest in homology to ADAMTS3, sharing 63% overall identity. ADAMTS14 has a PLAC (Protease and LACunin) domain at the carboxyterminal end, containing a 6 cysteine conserved repeat. The sequence also contains a prohormone-convertase cleavage site (predicted PC cleavage site is the RKRR252 sequence). Several splice variants of ADAMTS-14 have been reported. ADAMTS14 has been shown to be a potential factor in multiple sclerosis (MS), by linkage analysis. ADAMTS14 is expressed in many tissues including lung, brain, liver and placenta.

Cellular localization

Secreted

Images



Immunohistochemical analysis of paraffin-embedded Human breast cancer tissue labeling ADAMTS14 with ab198885 at 1/50 dilution.

Immunohistochemistry (Formalin/PFA-fixed paraffin-embedded sections) - Anti-ADAMTS14 antibody (ab198885)

Please note: All products are "FOR RESEARCH USE ONLY. NOT FOR USE IN DIAGNOSTIC PROCEDURES"

Our Abpromise to you: Quality guaranteed and expert technical support

- Replacement or refund for products not performing as stated on the datasheet
- Valid for 12 months from date of delivery
- Response to your inquiry within 24 hours
- We provide support in Chinese, English, French, German, Japanese and Spanish

- Extensive multi-media technical resources to help you
- We investigate all quality concerns to ensure our products perform to the highest standards

If the product does not perform as described on this datasheet, we will offer a refund or replacement. For full details of the Abpromise, please visit <https://www.abcam.com/abpromise> or contact our technical team.

Terms and conditions

- Guarantee only valid for products bought direct from Abcam or one of our authorized distributors