




## Product datasheet

### Anti-Adducin antibody ab176699

[2 Images](#)

#### Overview

<b>Product name</b>	Anti-Adducin antibody
<b>Description</b>	Rabbit polyclonal to Adducin
<b>Host species</b>	Rabbit
<b>Tested applications</b>	<b>Suitable for:</b> WB, IP
<b>Species reactivity</b>	<b>Reacts with:</b> Human <b>Predicted to work with:</b> Chimpanzee, Rhesus monkey, Gorilla, Orangutan 
<b>Immunogen</b>	Synthetic peptide within Human Adducin aa 600-650. The exact sequence is proprietary. Sequence: SPVQSPAKEAETKSPLVSPSKSLEEGTKKTETSKAATTE PETTQPEGVVV N  Database link: <a href="#">P35612</a> <div>  <a href="#">Run BLAST with</a>  <a href="#">Run BLAST with</a> </div>
<b>Positive control</b>	HeLa, 293T and Jurkat whole cell lysates.
<b>General notes</b>	<p>The Life Science industry has been in the grips of a reproducibility crisis for a number of years. Abcam is leading the way in addressing this with our range of recombinant monoclonal antibodies and knockout edited cell lines for gold-standard validation. Please check that this product meets your needs before purchasing.</p> <p>If you have any questions, special requirements or concerns, please send us an inquiry and/or contact our Support team ahead of purchase. Recommended alternatives for this product can be found below, along with publications, customer reviews and Q&amp;As</p>

#### Properties

<b>Form</b>	Liquid
<b>Storage instructions</b>	Shipped at 4°C. Store at +4°C short term (1-2 weeks). Upon delivery aliquot. Store at -20°C long term. Avoid freeze / thaw cycle.
<b>Storage buffer</b>	<p>pH: 7 Preservative: 0.09% Sodium azide Constituent: 99% Tris citrate/phosphate</p> <p>pH 7 to 8</p>

<b>Purity</b>	Immunogen affinity purified
<b>Clonality</b>	Polyclonal
<b>Isotype</b>	IgG

## Applications

**The Abpromise guarantee** Our **Abpromise guarantee** covers the use of ab176699 in the following tested applications. The application notes include recommended starting dilutions; optimal dilutions/concentrations should be determined by the end user.

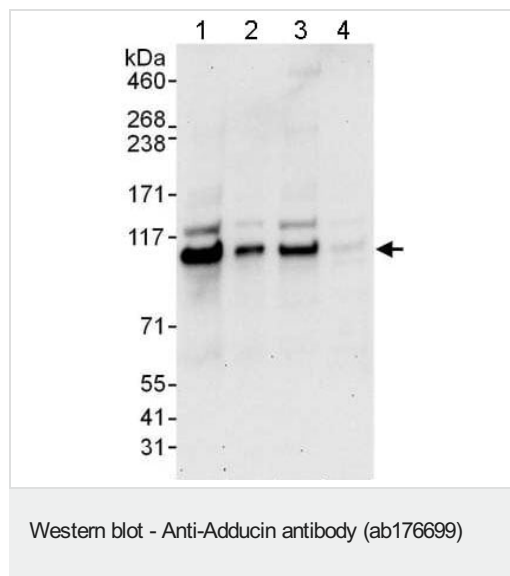
Application	Abreviews	Notes
<b>WB</b>		1/2000 - 1/10000. Predicted molecular weight: 81 kDa.
<b>IP</b>		Use at 2-10 µg/mg of lysate.

## Target

**Relevance** Adducins are a family of cytoskeletal proteins encoded by three genes (alpha, beta, gamma). Adducin is a heterodimeric protein that consists of related subunits, which are produced from distinct genes but share a similar structure. Alpha and beta adducin include a protease-resistant N-terminal region and a protease-sensitive, hydrophilic C-terminal region. Alpha and gamma adducins are ubiquitously expressed. In contrast, beta adducin is expressed at high levels in brain and hematopoietic tissues. Adducin binds with high affinity to  $Ca^{2+}$ /calmodulin and is a substrate for protein kinases A and C. Alternative splicing results in multiple variants encoding distinct isoforms; however, not all variants have been fully described.

**Cellular localization** Cytoplasm › cytoskeleton. Cell membrane; Peripheral membrane protein; Cytoplasmic side.

## Images



**All lanes :** Anti-Adducin antibody (ab176699) at 0.1 µg/ml

**Lane 1 :** 293T whole cell lysate at 50 µg

**Lane 2 :** 293T whole cell lysate at 15 µg

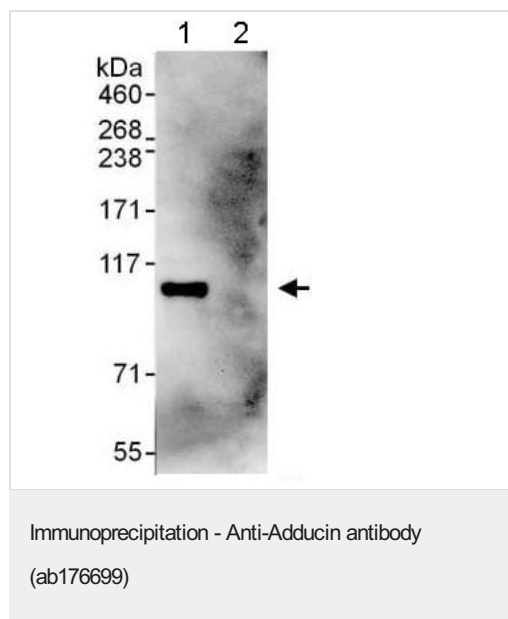
**Lane 3 :** HeLa whole cell lysate at 50 µg

**Lane 4 :** Jurkat whole cell lysate at 50 µg

Developed using the ECL technique.

**Predicted band size:** 81 kDa

**Exposure time:** 30 seconds



Detection of Adducin by Western Blot of Immunoprecipitate.

Lane 1: ab176699 at 1 µg/ml staining Adducin in 293T whole cell lysate immunoprecipitated using ab176699 at 6 µg/mg lysate (1 mg/IP; 20% of IP loaded/lane).

Lane 2: control IgG.

**Please note:** All products are "FOR RESEARCH USE ONLY. NOT FOR USE IN DIAGNOSTIC PROCEDURES"

### Our Abpromise to you: Quality guaranteed and expert technical support

- Replacement or refund for products not performing as stated on the datasheet
- Valid for 12 months from date of delivery
- Response to your inquiry within 24 hours
- We provide support in Chinese, English, French, German, Japanese and Spanish
- Extensive multi-media technical resources to help you
- We investigate all quality concerns to ensure our products perform to the highest standards

If the product does not perform as described on this datasheet, we will offer a refund or replacement. For full details of the Abpromise, please visit <https://www.abcam.com/abpromise> or contact our technical team.

### Terms and conditions

- Guarantee only valid for products bought direct from Abcam or one of our authorized distributors