

## Product datasheet

### Anti-ADHFE1 antibody [EPR12501] ab173530

Recombinant RabMAb

3 Images

#### Overview

Product name	Anti-ADHFE1 antibody [EPR12501]
Description	Rabbit monoclonal [EPR12501] to ADHFE1
Host species	Rabbit
Tested applications	<b>Suitable for:</b> WB, IP <b>Unsuitable for:</b> ICC/IF or IHC-P
Species reactivity	<b>Reacts with:</b> Human <b>Does not react with:</b> Mouse, Rat
Immunogen	Recombinant fragment within Human ADHFE1. The exact sequence is proprietary. Database link: <a href="#">Q8IWW8</a>
Positive control	Human fetal liver and fetal kidney lysates. Immunoprecipitation pellet from Human fetal liver lysate.
General notes	This product is a recombinant monoclonal antibody, which offers several advantages including: <ul style="list-style-type: none"> <li>- High batch-to-batch consistency and reproducibility</li> <li>- Improved sensitivity and specificity</li> <li>- Long-term security of supply</li> <li>- Animal-free production</li> </ul> For more information <a href="#">see here</a> .  Our RabMAb <sup>®</sup> technology is a patented hybridoma-based technology for making rabbit monoclonal antibodies. For details on our patents, please refer to <a href="#">RabMAb<sup>®</sup> patents</a> .

#### Properties

Form	Liquid
Storage instructions	Shipped at 4°C. Store at +4°C short term (1-2 weeks). Upon delivery aliquot. Store at -20°C long term. Avoid freeze / thaw cycle.
Storage buffer	pH: 7.20 Preservative: 0.01% Sodium azide Constituents: 9% PBS, 40% Glycerol (glycerin, glycerine), 0.05% BSA, 50% Tissue culture supernatant
Purity	Tissue culture supernatant
Clonality	Monoclonal

Clone number EPR12501  
Isotype IgG

## Applications

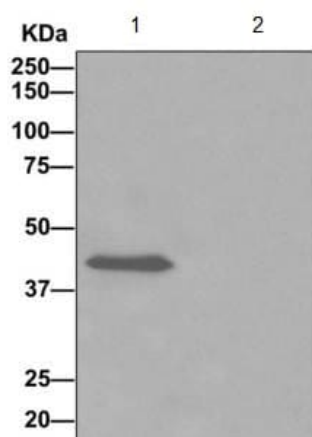
**The Abpromise guarantee** Our **Abpromise guarantee** covers the use of ab173530 in the following tested applications.  
The application notes include recommended starting dilutions; optimal dilutions/concentrations should be determined by the end user.

Application	Abreviews	Notes
WB		1/1000 - 1/10000. Predicted molecular weight: 50 kDa.
IP		1/10 - 1/100.

**Application notes** Is unsuitable for ICC/IF or IHC-P.

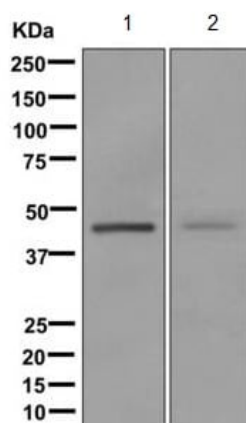
## Target

## Images



Immunoprecipitation - Anti-ADHFE1 antibody  
[EPR12501] (ab173530)

Western blot analysis on immunoprecipitation pellet from (Lane 1) Human fetal liver lysate or (Lane 2) 1X PBS (negative control) using ab173530 at a 1/10 dilution to immunoprecipitate ADHFE1, and HRP-conjugated anti-rabbit IgG preferentially detecting the non-reduced form of rabbit IgG.



Western blot - Anti-ADHFE1 antibody [EPR12501] (ab173530)

**All lanes :** Anti-ADHFE1 antibody [EPR12501] (ab173530) at 1/1000 dilution

**Lane 1 :** Human fetal liver lysates

**Lane 2 :** Human fetal kidney lysates

Lysates/proteins at 10 µg per lane.

**Predicted band size:** 50 kDa

### Why choose a recombinant antibody?



**Research with confidence**  
Consistent and reproducible results



**Long-term and scalable supply**  
Recombinant technology



**Success from the first experiment**  
Confirmed specificity



**Ethical standards compliant**  
Animal-free production

Anti-ADHFE1 antibody [EPR12501] (ab173530)

**Please note:** All products are "FOR RESEARCH USE ONLY. NOT FOR USE IN DIAGNOSTIC PROCEDURES"

### Our Abpromise to you: Quality guaranteed and expert technical support

- Replacement or refund for products not performing as stated on the datasheet
- Valid for 12 months from date of delivery

- Response to your inquiry within 24 hours
- We provide support in Chinese, English, French, German, Japanese and Spanish
- Extensive multi-media technical resources to help you
- We investigate all quality concerns to ensure our products perform to the highest standards

If the product does not perform as described on this datasheet, we will offer a refund or replacement. For full details of the Abpromise, please visit <https://www.abcam.com/abpromise> or contact our technical team.

#### **Terms and conditions**

---

- Guarantee only valid for products bought direct from Abcam or one of our authorized distributors