

Product datasheet

Anti-ADRA1B antibody [EPR10336] ab169523

Recombinant RabMAb

★☆☆☆☆ **1 Abreviews** **19 References** **8 Images**

Overview

Product name	Anti-ADRA1B antibody [EPR10336]
Description	Rabbit monoclonal [EPR10336] to ADRA1B
Host species	Rabbit
Tested applications	Suitable for: IHC-P, WB Unsuitable for: Flow Cyt or ICC/IF
Species reactivity	Reacts with: Mouse, Rat, Human
Immunogen	Synthetic peptide within Human ADRA1B aa 150-250. The exact sequence is proprietary. Database link: P35368
Positive control	WB: HeLa, PC-3 and NIH/3T3 cell lysate, human fetal brain lysates, mouse and rat brain lysates, mouse and rat stomach lysates; IHC-P: Rat and mouse stomach tissue. Human ovarian carcinoma, breast carcinoma, and kidney tissues.
General notes	This product is a recombinant monoclonal antibody, which offers several advantages including: <ul style="list-style-type: none"> - High batch-to-batch consistency and reproducibility - Improved sensitivity and specificity - Long-term security of supply - Animal-free production For more information see here . Our RabMAb [®] technology is a patented hybridoma-based technology for making rabbit monoclonal antibodies. For details on our patents, please refer to RabMAb[®] patents .

Properties

Form	Liquid
Storage instructions	Shipped at 4°C. Store at +4°C short term (1-2 weeks). Upon delivery aliquot. Store at -20°C long term. Avoid freeze / thaw cycle.
Storage buffer	Preservative: 0.01% Sodium azide Constituents: 59% PBS, 40% Glycerol (glycerin, glycerine), 0.05% BSA
Purity	Protein A purified
Clonality	Monoclonal
Clone number	EPR10336

Isotype

IgG

Applications

The Abpromise guarantee

Our **Abpromise guarantee** covers the use of ab169523 in the following tested applications.

The application notes include recommended starting dilutions; optimal dilutions/concentrations should be determined by the end user.

Application	Abreviews	Notes
IHC-P		1/500. Perform heat mediated antigen retrieval with Tris/EDTA buffer pH 9.0 before commencing with IHC staining protocol.
WB	★☆☆☆☆ (1)	1/1000 - 1/10000. Predicted molecular weight: 57 kDa.

Application notes

Is unsuitable for Flow Cyt or ICC/IF.

Target

Function

This alpha-adrenergic receptor mediates its action by association with G proteins that activate a phosphatidylinositol-calcium second messenger system. Its effect is mediated by G(q) and G(11) proteins. Nuclear ADRA1A-ADRA1B heterooligomers regulate phenylephrine (PE)-stimulated ERK signaling in cardiac myocytes.

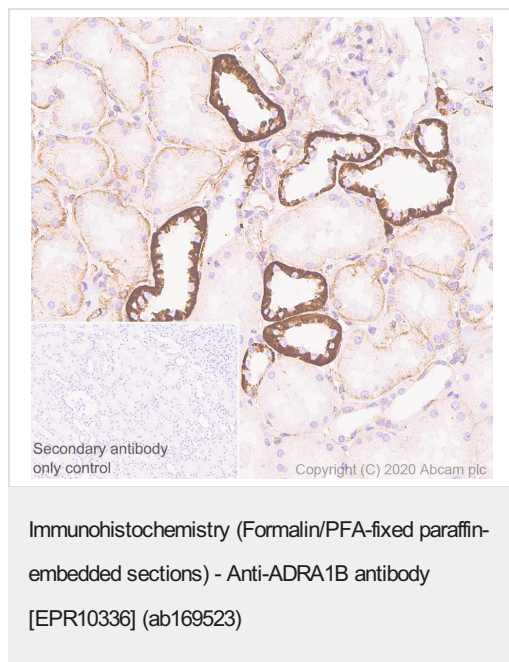
Sequence similarities

Belongs to the G-protein coupled receptor 1 family. Adrenergic receptor subfamily. ADRA1B sub-subfamily.

Cellular localization

Nucleus membrane. Cell membrane. Location at the nuclear membrane facilitates heterooligomerization and regulates ERK-mediated signaling in cardiac myocytes. signaling in cardiac myocytes. Colocalizes with GNAQ, PLCB1 as well as LAP2 at the nuclear membrane of cardiac myocytes.

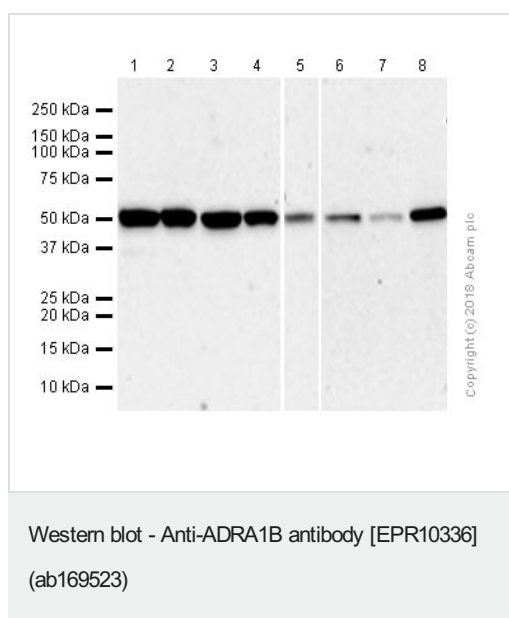
Images



Immunohistochemical analysis of paraffin-embedded Human kidney tissue labeling ADRA1B with ab169523 at 1/500 (1.242 µg/mL) dilution followed by a ready to use Rabbit specific IHC polymer detection kit HRP/DAB (**ab209101**). Cytoplasmic staining predominantly on collecting duct of human kidney. The section was incubated with ab169523 for 30 minutes at room temperature. The immunostaining was performed on a Leica Biosystems BOND® RX instrument Counterstained with Hematoxylin.

Secondary antibody only control: Secondary antibody is a ready to use Rabbit specific IHC polymer detection kit HRP/DAB (**ab209101**).

Heat mediated antigen retrieval with Tris-EDTA buffer (pH 9.0, epitope retrieval solution) for 20 minutes.



All lanes : Anti-ADRA1B antibody [EPR10336] (ab169523) at 1/2000 dilution (Purified)

Lane 1 : Human fetal brain lysates

Lane 2 : PC-3 (Human prostate adenocarcinoma epithelial cell) whole cell lysates

Lane 3 : Mouse brain lysates

Lane 4 : NIH/3T3 (Mouse embryonic fibroblast) whole cell lysates

Lane 5 : Rat brain lysates

Lane 6 : Mouse stomach lysates

Lane 7 : Rat stomach lysates

Lane 8 : HeLa (Human cervix adenocarcinoma epithelial cell) whole cell lysates

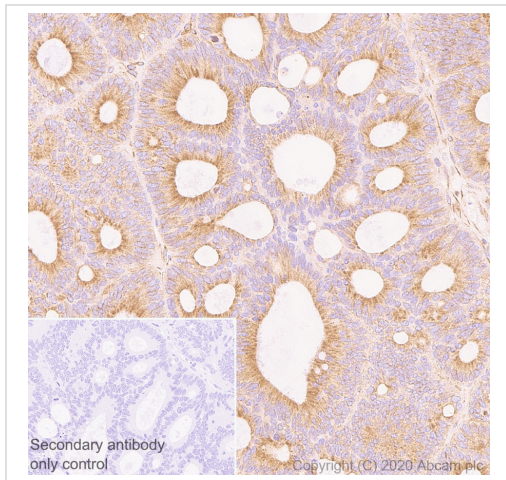
Lysates/proteins at 20 µg per lane.

Secondary

All lanes : Goat Anti-Rabbit IgG (HRP) with minimal cross-reactivity with human IgG at 1/2000 dilution

Predicted band size: 57 kDa

Observed band size: 57 kDa



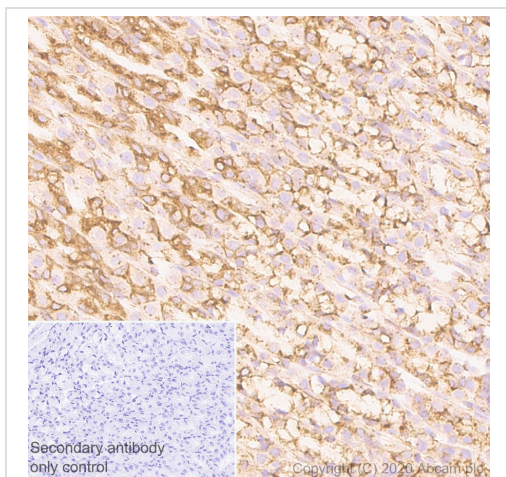
Immunohistochemistry (Formalin/PFA-fixed paraffin-embedded sections) - Anti-ADRA1B antibody [EPR10336] (ab169523)

Immunohistochemical analysis of paraffin-embedded Human ovarian carcinoma tissue labeling ADRA1B with ab169523 at 1/500 (1.242 µg/mL) dilution followed by a ready to use Rabbit specific IHC polymer detection kit HRP/DAB (**ab209101**).

Cytoplasmic staining on human ovarian carcinoma. The section was incubated with ab169523 for 30 minutes at room temperature. The immunostaining was performed on a Leica Biosystems BOND® RX instrument Counterstained with Hematoxylin.

Secondary antibody only control: Secondary antibody is a ready to use Rabbit specific IHC polymer detection kit HRP/DAB (**ab209101**).

Heat mediated antigen retrieval with Tris-EDTA buffer (pH 9.0, epitope retrieval solution) for 20 minutes.

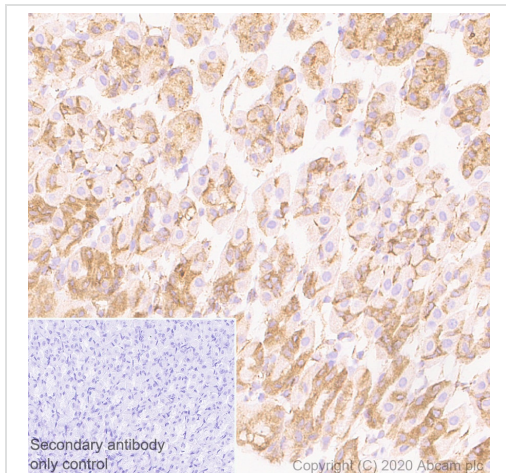


Immunohistochemistry (Formalin/PFA-fixed paraffin-embedded sections) - Anti-ADRA1B antibody [EPR10336] (ab169523)

Immunohistochemical analysis of paraffin-embedded Rat stomach tissue labeling ADRA1B with ab169523 at 1/500 (1.242 µg/mL) dilution followed by a ready to use Rabbit specific IHC polymer detection kit HRP/DAB (**ab209101**). Cytoplasmic staining on rat stomach. The section was incubated with ab169523 for 30 minutes at room temperature. The immunostaining was performed on a Leica Biosystems BOND® RX instrument Counterstained with Hematoxylin.

Secondary antibody only control: Secondary antibody is a ready to use Rabbit specific IHC polymer detection kit HRP/DAB (**ab209101**).

Heat mediated antigen retrieval with Tris-EDTA buffer (pH 9.0, epitope retrieval solution) for 20 minutes.

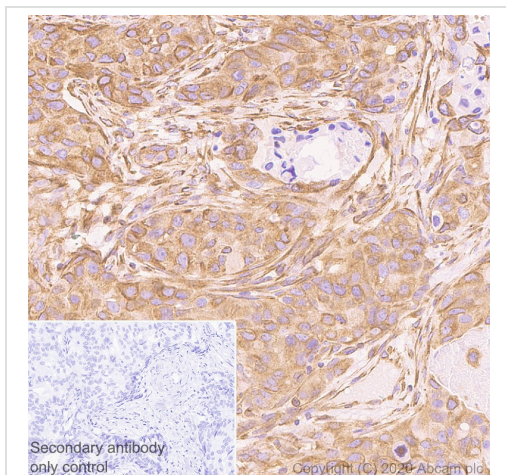


Immunohistochemistry (Formalin/PFA-fixed paraffin-embedded sections) - Anti-ADRA1B antibody [EPR10336] (ab169523)

Immunohistochemical analysis of paraffin-embedded Mouse stomach tissue labeling ADRA1B with ab169523 at 1/500 (1.242 µg/mL) dilution followed by a ready to use Rabbit specific IHC polymer detection kit HRP/DAB (**ab209101**). Cytoplasmic staining on mouse stomach. The section was incubated with ab169523 for 30 minutes at room temperature. The immunostaining was performed on a Leica Biosystems BOND® RX instrument Counterstained with Hematoxylin.

Secondary antibody only control: Secondary antibody is a ready to use Rabbit specific IHC polymer detection kit HRP/DAB (**ab209101**).

Heat mediated antigen retrieval with Tris-EDTA buffer (pH 9.0, epitope retrieval solution) for 20 minutes.

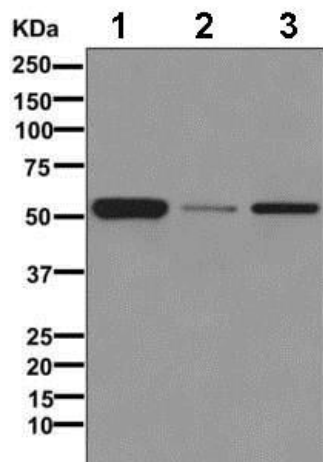


Immunohistochemistry (Formalin/PFA-fixed paraffin-embedded sections) - Anti-ADRA1B antibody [EPR10336] (ab169523)

Immunohistochemical analysis of paraffin-embedded Human breast carcinoma tissue labeling ADRA1B with ab169523 at 1/500 (1.242 µg/mL) dilution followed by a ready to use Rabbit specific IHC polymer detection kit HRP/DAB (**ab209101**). Cytoplasmic staining on human breast carcinoma. The section was incubated with ab169523 for 30 minutes at room temperature. The immunostaining was performed on a Leica Biosystems BOND® RX instrument Counterstained with Hematoxylin.

Secondary antibody only control: Secondary antibody is a ready to use Rabbit specific IHC polymer detection kit HRP/DAB (**ab209101**).

Heat mediated antigen retrieval with Tris-EDTA buffer (pH 9.0, epitope retrieval solution) for 20 minutes.



Western blot - Anti-ADRA1B antibody [EPR10336] (ab169523)

All lanes : Anti-ADRA1B antibody [EPR10336] (ab169523) at 1/1000 dilution (unpurified)

Lane 1 : Fetal brain lysate

Lane 2 : PC-3 lysate

Lane 3 : HeLa cell lysate

Lysates/proteins at 10 µg per lane.

Secondary

All lanes : HRP labelled goat anti-rabbit at 1/2000 dilution

Predicted band size: 57 kDa

Why choose a recombinant antibody?



Research with confidence
Consistent and reproducible results



Long-term and scalable supply
Recombinant technology



Success from the first experiment
Confirmed specificity



Ethical standards compliant
Animal-free production

Anti-ADRA1B antibody [EPR10336] (ab169523)

Please note: All products are "FOR RESEARCH USE ONLY. NOT FOR USE IN DIAGNOSTIC PROCEDURES"

Our Abpromise to you: Quality guaranteed and expert technical support

- Replacement or refund for products not performing as stated on the datasheet
- Valid for 12 months from date of delivery
- Response to your inquiry within 24 hours
- We provide support in Chinese, English, French, German, Japanese and Spanish
- Extensive multi-media technical resources to help you
- We investigate all quality concerns to ensure our products perform to the highest standards

If the product does not perform as described on this datasheet, we will offer a refund or replacement. For full details of the Abpromise, please visit <https://www.abcam.com/abpromise> or contact our technical team.

Terms and conditions

- Guarantee only valid for products bought direct from Abcam or one of our authorized distributors