

Product datasheet

Anti-ADRM1/ARM-1 antibody [EPR11450(B)] α b157218

KO VALIDATED

Recombinant

RabMAb

[3 References](#) [6 Images](#)

Overview

Product name	Anti-ADRM1/ARM-1 antibody [EPR11450(B)]
Description	Rabbit monoclonal [EPR11450(B)] to ADRM1/ARM-1
Host species	Rabbit
Tested applications	Suitable for: Flow Cyt (Intra), WB, IHC-P Unsuitable for: IP
Species reactivity	Reacts with: Mouse, Human
Immunogen	Synthetic peptide corresponding to Human ADRM1/ARM-1 aa 350 to the C-terminus.
Positive control	WB: HEK293T, K562, Raji, HeLa, Raw264.7 and NIH 3T3 cell lysates. IHC-P: Human testis tissue, Human thyroid gland carcinoma tissue. Flow Cyt (intra): HeLa cells.
General notes	<p>This product is a recombinant monoclonal antibody, which offers several advantages including:</p> <ul style="list-style-type: none"> - High batch-to-batch consistency and reproducibility - Improved sensitivity and specificity - Long-term security of supply - Animal-free production <p>For more information see here.</p> <p>Our RabMAb[®] technology is a patented hybridoma-based technology for making rabbit monoclonal antibodies. For details on our patents, please refer to RabMAb[®] patents.</p> <p>Rat: We have preliminary internal testing data to indicate this antibody may not react with this species. Please contact us for more information.</p>

Properties

Form	Liquid
Storage instructions	Shipped at 4°C. Upon delivery aliquot and store at -20°C. Avoid freeze / thaw cycles.
Storage buffer	<p>pH: 7.2</p> <p>Preservative: 0.01% Sodium azide</p> <p>Constituents: 9% PBS, 40% Glycerol (glycerin, glycerine), 0.05% BSA, 50% Tissue culture supernatant</p>
Purity	Protein A purified

Clonality	Monoclonal
Clone number	EPR11450(B)
Isotype	IgG

Applications

The Abpromise guarantee Our **Abpromise guarantee** covers the use of ab157218 in the following tested applications. The application notes include recommended starting dilutions; optimal dilutions/concentrations should be determined by the end user.

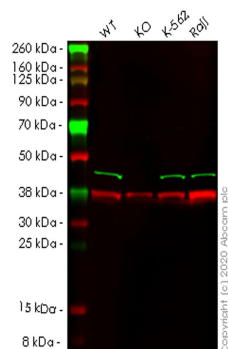
Application	Abreviews	Notes
Flow Cyt (Intra)		1/10 - 1/100. ab172730 - Rabbit monoclonal IgG, is suitable for use as an isotype control with this antibody.
WB		1/1000 - 1/10000. Predicted molecular weight: 42 kDa.
IHC-P		1/50 - 1/100. Perform heat mediated antigen retrieval with citrate buffer pH 6 before commencing with IHC staining protocol.

Application notes Is unsuitable for IP.

Target

Function	Functions as a proteasomal ubiquitin receptor. Recruits the deubiquitinating enzyme UCHL5 at the 26S proteasome and promotes its activity.
Sequence similarities	Belongs to the ADRM1 family. Contains 1 PH domain.
Domain	The PH domain mediates interactions with PSMD1 and ubiquitin. Preferential binding to the proximal subunit of K48-linked diubiquitin allows UCHL5 access to the distal subunit.
Cellular localization	Cytoplasm. Nucleus.

Images



Western blot - Anti-ADRM1/ARM-1 antibody
[EPR11450(B)] (ab157218)

All lanes : Anti-ADRM1/ARM-1 antibody [EPR11450(B)]
(ab157218) at 1/1000 dilution

Lane 1 : Wild-type HEK293T cell lysate

Lane 2 : ADRM1 knockout HEK293T cell lysate

Lane 3 : K-562 cell lysate

Lane 4 : Raji cell lysate

Lysates/proteins at 20 µg per lane.

Secondary

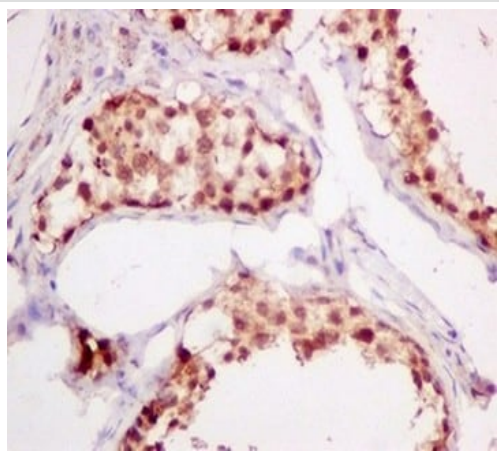
All lanes : Goat anti-Rabbit IgG H&L (IRDye® 800CW)
preadsorbed (**ab216773**) at 1/10000 dilution

Predicted band size: 42 kDa

Observed band size: 42 kDa

Lanes 1-4: Merged signal (red and green). Green - ab157218
observed at 42 kDa. Red - loading control **ab8245** observed at 36
kDa.

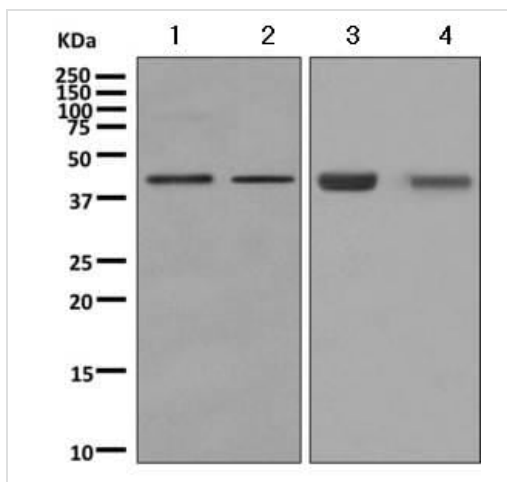
ab157218 Anti-ADRM1/ARM-1 antibody [EPR11450(B)] was
shown to specifically react with ADRM1/ARM-1 in wild-type
HEK293T cells. Loss of signal was observed when knockout cell
line **ab266765** (knockout cell lysate **ab257816**) was used. Wild-
type and ADRM1/ARM-1 knockout samples were subjected to
SDS-PAGE. ab157218 and Anti-GAPDH antibody [6C5] - Loading
Control (**ab8245**) were incubated overnight at 4°C at 1 in 1000
dilution and 1 in 20000 dilution respectively. Blots were developed
with Goat anti-Rabbit IgG H&L (IRDye® 800CW) preadsorbed
(**ab216773**) and Goat anti-Mouse IgG H&L (IRDye® 680RD)
preadsorbed (**ab216776**) secondary antibodies at 1 in 20000
dilution for 1 hour at room temperature before imaging.



Immunohistochemistry (Formalin/PFA-fixed paraffin-embedded sections) - Anti-ADRM1/ARM-1 antibody [EPR11450(B)] (ab157218)

Immunohistochemical analysis of paraffin embedded Human testis tissue labeling ADRM1/ARM-1 with ab157218 at 1/50.

Perform heat mediated antigen retrieval with citrate buffer pH 6 before commencing with IHC staining protocol.



Western blot - Anti-ADRM1/ARM-1 antibody [EPR11450(B)] (ab157218)

All lanes : Anti-ADRM1/ARM-1 antibody [EPR11450(B)] (ab157218) at 1/1000 dilution

Lane 1 : Raji cell lysate

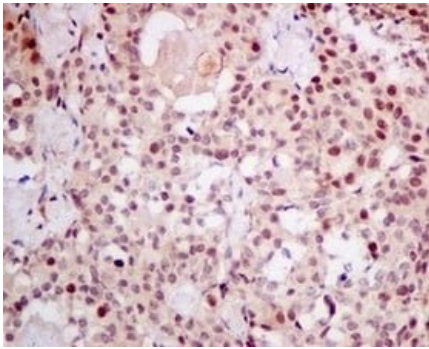
Lane 2 : HeLa cell lysate

Lane 3 : RAW 264.7 cell lysate

Lane 4 : NIH/3T3 cell lysate

Lysates/proteins at 10 µg per lane.

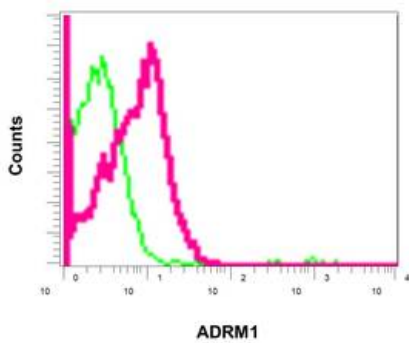
Predicted band size: 42 kDa



Immunohistochemistry (Formalin/PFA-fixed paraffin-embedded sections) - Anti-ADRM1/ARM-1 antibody [EPR11450(B)] (ab157218)

Immunohistochemical analysis of paraffin embedded Human thyroid gland carcinoma tissue labeling ADRM1/ARM-1 with ab157218 at 1/50.

Perform heat mediated antigen retrieval with citrate buffer pH 6 before commencing with IHC staining protocol.



Flow Cytometry (Intracellular) - Anti-ADRM1/ARM-1 antibody [EPR11450(B)] (ab157218)

Intracellular flow cytometric analysis of permeabilized Hela cells using ab157218 at 1/10 (red) or a rabbit IgG negative (green).

Why choose a recombinant antibody?



Research with confidence
Consistent and reproducible results



Long-term and scalable supply
Recombinant technology



Success from the first experiment
Confirmed specificity



Ethical standards compliant
Animal-free production

Anti-ADRM1/ARM-1 antibody [EPR11450(B)]
(ab157218)

Please note: All products are "FOR RESEARCH USE ONLY. NOT FOR USE IN DIAGNOSTIC PROCEDURES"

Our Abpromise to you: Quality guaranteed and expert technical support

- Replacement or refund for products not performing as stated on the datasheet
- Valid for 12 months from date of delivery
- Response to your inquiry within 24 hours
- We provide support in Chinese, English, French, German, Japanese and Spanish
- Extensive multi-media technical resources to help you
- We investigate all quality concerns to ensure our products perform to the highest standards

If the product does not perform as described on this datasheet, we will offer a refund or replacement. For full details of the Abpromise, please visit <https://www.abcam.com/abpromise> or contact our technical team.

Terms and conditions

- Guarantee only valid for products bought direct from Abcam or one of our authorized distributors