

## Product datasheet

# Anti-Adropin antibody ab122800

★★★★★ [1 Abreviews](#) [4 References](#) [4 Images](#)

### Overview

<b>Product name</b>	Anti-Adropin antibody
<b>Description</b>	Rabbit polyclonal to Adropin
<b>Host species</b>	Rabbit
<b>Tested applications</b>	<b>Suitable for:</b> IHC-P
<b>Species reactivity</b>	<b>Reacts with:</b> Human
<b>Immunogen</b>	antigen sequence: SADVDSLSES SPNSSPGPCP EKAPPPQKPS HEGSYLLQ, corresponding to amino acids of Human Adropin. <a href="#">Run BLAST with Expasy</a> <a href="#">Run BLAST with NCBI</a>
<b>Positive control</b>	IHC-P: Human Cerebral cortex, Liver, Kidney and Lung tissues.
<b>General notes</b>	<p>The Life Science industry has been in the grips of a reproducibility crisis for a number of years. Abcam is leading the way in addressing this with our range of recombinant monoclonal antibodies and knockout edited cell lines for gold-standard validation. Please check that this product meets your needs before purchasing.</p> <p>If you have any questions, special requirements or concerns, please send us an inquiry and/or contact our Support team ahead of purchase. Recommended alternatives for this product can be found below, along with publications, customer reviews and Q&amp;As</p>

### Properties

<b>Form</b>	Liquid
<b>Storage instructions</b>	Shipped at 4°C. Upon delivery aliquot and store at -20°C. Avoid freeze / thaw cycles.
<b>Storage buffer</b>	pH: 7.20 Preservative: 0.02% Sodium azide Constituents: 40% Glycerol (glycerin, glycerine), 59% PBS
<b>Purity</b>	Immunogen affinity purified
<b>Clonality</b>	Polyclonal
<b>Isotype</b>	IgG

### Applications

## The Abpromise guarantee

Our **Abpromise guarantee** covers the use of ab122800 in the following tested applications.

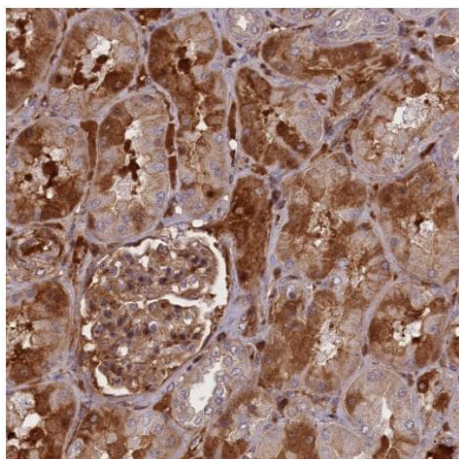
The application notes include recommended starting dilutions; optimal dilutions/concentrations should be determined by the end user.

Application	Abreviews	Notes
IHC-P		1/200 - 1/500. Perform heat mediated antigen retrieval with citrate buffer pH 6 before commencing with IHC staining protocol.

## Target

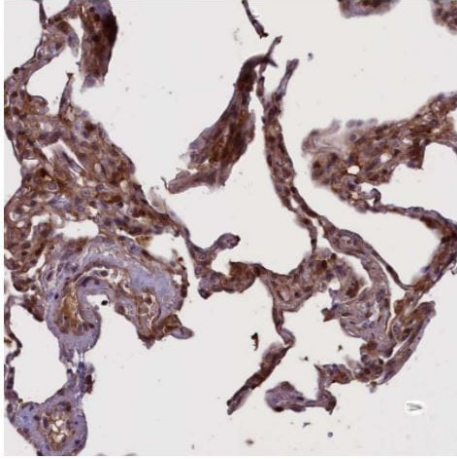
Function	Involved in the regulation of glucose homeostasis and lipid metabolism.
Tissue specificity	Expressed in liver and brain.
Cellular localization	Secreted.

## Images



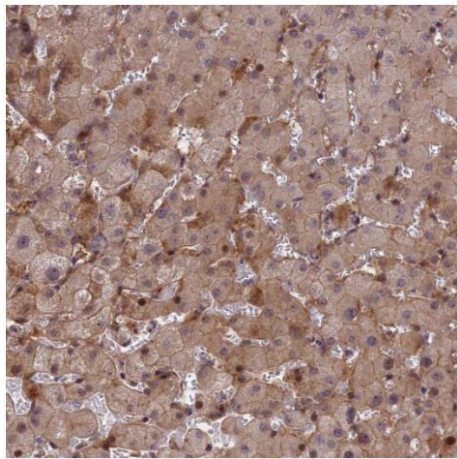
ab122800, at 1/200 dilution, staining Adropin in Paraffin-embedded Human kidney tissue by Immunohistochemistry showing cytoplasmic staining of tubules and glomeruli.

Immunohistochemistry (Formalin/PFA-fixed paraffin-embedded sections) - Anti-Adropin antibody (ab122800)



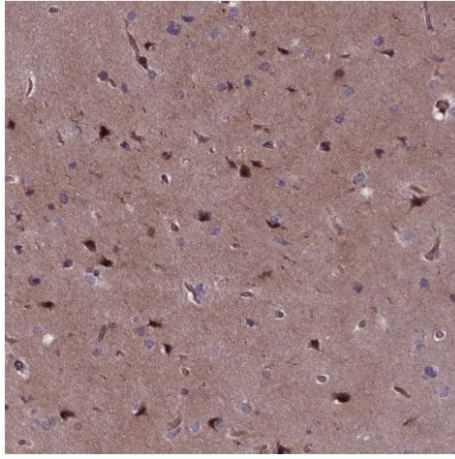
Immunohistochemistry (Formalin/PFA-fixed paraffin-embedded sections) - Anti-Adropin antibody (ab122800)

ab122800, at 1/200 dilution, staining Adropin in Paraffin-embedded Human lung tissue by Immunohistochemistry showing cytoplasmic staining in pneumocytes.



Immunohistochemistry (Formalin/PFA-fixed paraffin-embedded sections) - Anti-Adropin antibody (ab122800)

ab122800, at 1/200 dilution, staining Adropin in Paraffin-embedded Human liver tissue by Immunohistochemistry showing cytoplasmic staining in hepatocytes.



Immunohistochemistry (Formalin/PFA-fixed paraffin-embedded sections) - Anti-Adropin antibody (ab122800)

ab122800, at 1/200 dilution, staining Adropin in Paraffin-embedded Human cerebral cortex by Immunohistochemistry showing cytoplasmic staining in neuronal cells and neuropil.

**Please note:** All products are "FOR RESEARCH USE ONLY. NOT FOR USE IN DIAGNOSTIC PROCEDURES"

#### Our Abpromise to you: Quality guaranteed and expert technical support

---

- Replacement or refund for products not performing as stated on the datasheet
- Valid for 12 months from date of delivery
- Response to your inquiry within 24 hours
- We provide support in Chinese, English, French, German, Japanese and Spanish
- Extensive multi-media technical resources to help you
- We investigate all quality concerns to ensure our products perform to the highest standards

If the product does not perform as described on this datasheet, we will offer a refund or replacement. For full details of the Abpromise, please visit <https://www.abcam.com/abpromise> or contact our technical team.

#### Terms and conditions

---

- Guarantee only valid for products bought direct from Abcam or one of our authorized distributors