

Product datasheet

Anti-ADX antibody [EPR4629] ab108257

Recombinant **RabMAb**

[5 References](#) [2 Images](#)

Overview

Product name	Anti-ADX antibody [EPR4629]
Description	Rabbit monoclonal [EPR4629] to ADX
Host species	Rabbit
Tested applications	Suitable for: WB Unsuitable for: Flow Cyt or IHC-P
Species reactivity	Reacts with: Mouse, Rat, Human
Immunogen	Synthetic peptide. This information is proprietary to Abcam and/or its suppliers.
General notes	<p>This product is a recombinant monoclonal antibody, which offers several advantages including:</p> <ul style="list-style-type: none"> - High batch-to-batch consistency and reproducibility - Improved sensitivity and specificity - Long-term security of supply - Animal-free production <p>For more information see here.</p> <p>Our RabMAb[®] technology is a patented hybridoma-based technology for making rabbit monoclonal antibodies. For details on our patents, please refer to RabMAb[®] patents.</p>

Properties

Form	Liquid
Storage instructions	Shipped at 4°C. Store at -20°C. Stable for 12 months at -20°C.
Storage buffer	pH: 7.20 Preservative: 0.01% Sodium azide Constituents: 0.05% BSA, 40% Glycerol (glycerin, glycerine), 59% PBS
Purity	Protein A purified
Clonality	Monoclonal
Clone number	EPR4629
Isotype	IgG

Applications

The Abpromise guarantee

Our **Abpromise guarantee** covers the use of ab108257 in the following tested applications.

The application notes include recommended starting dilutions; optimal dilutions/concentrations should be determined by the end user.

Application	Abreviews	Notes
WB		1/1000 - 1/10000. Detects a band of approximately 14 kDa (predicted molecular weight: 19 kDa).

Application notes

Is unsuitable for Flow Cyt or IHC-P.

Target

Function

Participates in the synthesis of thyroid hormones. Transfers electrons from adrenodoxin reductase to the cholesterol side chain cleavage cytochrome P450.

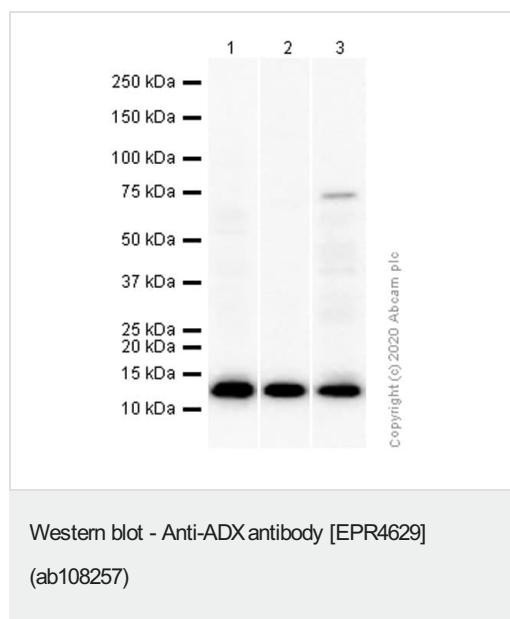
Sequence similarities

Belongs to the adrenodoxin/putidaredoxin family.
Contains 1 2Fe-2S ferredoxin-type domain.

Cellular localization

Mitochondrion matrix.

Images



All lanes : Anti-ADX antibody [EPR4629] (ab108257) at 1/1000 dilution (Purified)

Lane 1 : A549 (Human lung carcinoma epithelial cell) whole cell lysate

Lane 2 : Mouse kidney lysate


Lane 3 : Rat kidney lysate

Secondary


All lanes : Goat Anti-Rabbit IgG H&L (HRP) ([ab97051](#)) at 1/20000 dilution

Predicted band size: 19 kDa


Why choose a recombinant antibody?




Research with confidence
Consistent and reproducible results



Long-term and scalable supply
Recombinant technology



Success from the first experiment
Confirmed specificity



Ethical standards compliant
Animal-free production

Anti-ADX antibody [EPR4629] (ab108257)

Please note: All products are "FOR RESEARCH USE ONLY. NOT FOR USE IN DIAGNOSTIC PROCEDURES"

Our Abpromise to you: Quality guaranteed and expert technical support

- Replacement or refund for products not performing as stated on the datasheet
- Valid for 12 months from date of delivery
- Response to your inquiry within 24 hours
- We provide support in Chinese, English, French, German, Japanese and Spanish
- Extensive multi-media technical resources to help you
- We investigate all quality concerns to ensure our products perform to the highest standards

If the product does not perform as described on this datasheet, we will offer a refund or replacement. For full details of the Abpromise, please visit <https://www.abcam.com/abpromise> or contact our technical team.

Terms and conditions

- Guarantee only valid for products bought direct from Abcam or one of our authorized distributors