

Product datasheet

Anti-AE binding protein 1 antibody [EPR7733(2)] ab168355

Recombinant RabMAb

[3 References](#) [2 Images](#)

Overview

Product name	Anti-AE binding protein 1 antibody [EPR7733(2)]
Description	Rabbit monoclonal [EPR7733(2)] to AE binding protein 1
Host species	Rabbit
Tested applications	Suitable for: WB Unsuitable for: Flow Cyt, ICC/IF, IHC-P or IP
Species reactivity	Reacts with: Human
Immunogen	Synthetic peptide corresponding to Human AE binding protein 1.
Positive control	HepG2 cell lysate.
General notes	<p>This product is a recombinant monoclonal antibody, which offers several advantages including:</p> <ul style="list-style-type: none"> - High batch-to-batch consistency and reproducibility - Improved sensitivity and specificity - Long-term security of supply - Animal-free production <p>For more information see here.</p> <p>Our RabMAb[®] technology is a patented hybridoma-based technology for making rabbit monoclonal antibodies. For details on our patents, please refer to RabMAb[®] patents.</p> <p>Mouse, Rat: We have preliminary internal testing data to indicate this antibody may not react with these species. Please contact us for more information.</p>

Properties

Form	Liquid
Storage instructions	Shipped at 4°C. Store at +4°C short term (1-2 weeks). Upon delivery aliquot. Store at -20°C long term.
Storage buffer	<p>pH: 7.2</p> <p>Preservative: 0.01% Sodium azide</p> <p>Constituents: 9% PBS, 40% Glycerol (glycerin, glycerine), 0.05% BSA, 50% Tissue culture supernatant</p>

Purity	Tissue culture supernatant
Clonality	Monoclonal
Clone number	EPR7733(2)
Isotype	IgG

Applications

The Abpromise guarantee Our **Abpromise guarantee** covers the use of ab168355 in the following tested applications.

The application notes include recommended starting dilutions; optimal dilutions/concentrations should be determined by the end user.

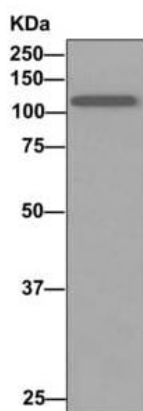
Application	Abreviews	Notes
WB		1/1000 - 1/5000. Predicted molecular weight: 131 kDa.

Application notes Is unsuitable for Flow Cyt, ICC/IF, IHC-P or IP.

Target

Relevance AEBP1 (adipocyte enhancer binding protein 1) is a transcriptional repressor which binds to the adipocyte enhancer 1 (AE-1) regulatory sequence, located in the proximal promoter region of the adipose P2 (aP2) gene. AEBP1 has carboxypeptidase (CP) activity and the direct binding of DNA to AEBP1 enhances its protease activity. AEBP1 expression is largely restricted to the aorta, particularly to smooth muscle cells.

Images



Western blot - Anti-AE binding protein 1 antibody [EPR7733(2)] (ab168355)

Anti-AE binding protein 1 antibody [EPR7733(2)] (ab168355) at 1/1000 dilution + HepG2 cell lysate at 10 µg

Secondary

HRP labeled goat anti-rabbit at 1/2000 dilution

Predicted band size: 131 kDa

Why choose a recombinant antibody?



Research with confidence
Consistent and reproducible results



Long-term and scalable supply
Recombinant technology



Success from the first experiment
Confirmed specificity



Ethical standards compliant
Animal-free production

Anti-AE binding protein 1 antibody [EPR7733(2)]
(ab168355)

Please note: All products are "FOR RESEARCH USE ONLY. NOT FOR USE IN DIAGNOSTIC PROCEDURES"

Our Abpromise to you: Quality guaranteed and expert technical support

- Replacement or refund for products not performing as stated on the datasheet
- Valid for 12 months from date of delivery
- Response to your inquiry within 24 hours
- We provide support in Chinese, English, French, German, Japanese and Spanish
- Extensive multi-media technical resources to help you
- We investigate all quality concerns to ensure our products perform to the highest standards

If the product does not perform as described on this datasheet, we will offer a refund or replacement. For full details of the Abpromise, please visit <https://www.abcam.com/abpromise> or contact our technical team.

Terms and conditions

- Guarantee only valid for products bought direct from Abcam or one of our authorized distributors