

# Anti-AFAF/Equatorin antibody ab121470

[2 Images](#)

### Overview

<b>Product name</b>	Anti-AFAF/Equatorin antibody
<b>Description</b>	Rabbit polyclonal to AFAF/Equatorin
<b>Host species</b>	Rabbit
<b>Tested applications</b>	<b>Suitable for:</b> WB, IHC-P
<b>Species reactivity</b>	<b>Reacts with:</b> Human
<b>Immunogen</b>	Recombinant fragment corresponding to Human AFAF/Equatorin aa 35-182.
<b>Positive control</b>	Human testis tissue.
<b>General notes</b>	<p>The Life Science industry has been in the grips of a reproducibility crisis for a number of years. Abcam is leading the way in addressing this with our range of recombinant monoclonal antibodies and knockout edited cell lines for gold-standard validation. Please check that this product meets your needs before purchasing.</p> <p>If you have any questions, special requirements or concerns, please send us an inquiry and/or contact our Support team ahead of purchase. Recommended alternatives for this product can be found below, along with publications, customer reviews and Q&amp;As</p>

### Properties

<b>Form</b>	Liquid
<b>Storage instructions</b>	Shipped at 4°C. Upon delivery aliquot and store at -20°C. Avoid repeated freeze / thaw cycles.
<b>Storage buffer</b>	pH: 7.20 Preservative: 0.02% Sodium azide Constituents: 40% Glycerol (glycerin, glycerine), 59% PBS
<b>Purity</b>	Immunogen affinity purified
<b>Clonality</b>	Polyclonal
<b>Isotype</b>	IgG

### Applications

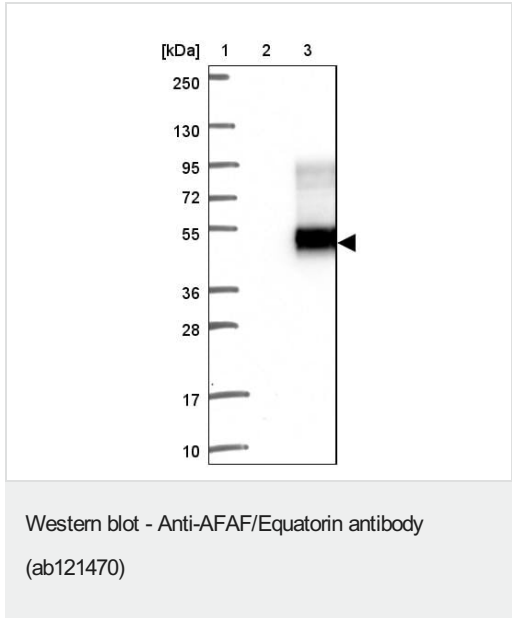
**The Abpromise guarantee** Our **Abpromise guarantee** covers the use of ab121470 in the following tested applications. The application notes include recommended starting dilutions; optimal dilutions/concentrations should be determined by the end user.

Application	Abreviews	Notes
WB		Use a concentration of 0.04 - 0.4 µg/ml.
IHC-P		1/200 - 1/500. Perform heat mediated antigen retrieval with citrate buffer pH 6 before commencing with IHC staining protocol.

### Target

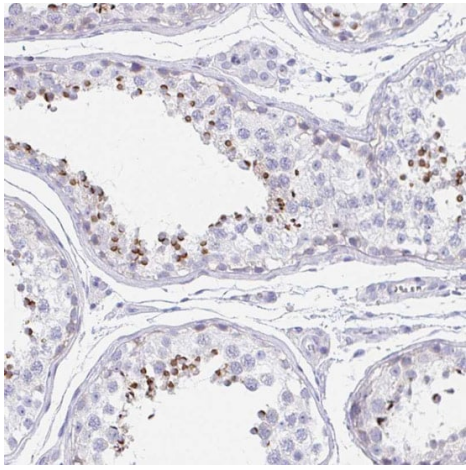
<b>Function</b>	Involved in acrosome biogenesis.
<b>Tissue specificity</b>	Isoform 1 is highly expressed in testis. Isoform 2 is expressed at low levels in skin and blood.
<b>Cellular localization</b>	Cytoplasmic vesicle > secretory vesicle > acrosome membrane.

### Images



**Lanes 2-3 :** Anti-AFAF/Equatorin antibody (ab121470)

- Lane 1 :** Marker
- Lane 2 :** HEK293T cell lysate - vector only transfected
- Lane 3 :** HEK293T cell lysate - overexpressing AFAF/Equatorin with a C-terminal myc-DDK tag (~3.1kDa)



Immunohistochemistry (Formalin/PFA-fixed paraffin-embedded sections) - Anti-AFAF/Equatorin antibody (ab121470)

Immunohistochemistry (Formalin/PFA-fixed paraffin-embedded sections) analysis of human testis tissue labelling AFAF/Equatorin with ab121470. Staining shows strong cytoplasmic positivity in spermatids.

**Please note:** All products are "FOR RESEARCH USE ONLY. NOT FOR USE IN DIAGNOSTIC PROCEDURES"

#### **Our Abpromise to you: Quality guaranteed and expert technical support**

---

- Replacement or refund for products not performing as stated on the datasheet
- Valid for 12 months from date of delivery
- Response to your inquiry within 24 hours
- We provide support in Chinese, English, French, German, Japanese and Spanish
- Extensive multi-media technical resources to help you
- We investigate all quality concerns to ensure our products perform to the highest standards

If the product does not perform as described on this datasheet, we will offer a refund or replacement. For full details of the Abpromise, please visit <https://www.abcam.com/abpromise> or contact our technical team.

#### **Terms and conditions**

---

- Guarantee only valid for products bought direct from Abcam or one of our authorized distributors